

Loan from Asian Infrastructure

Hubei Global Air Cargo Logistics Hub Project Stakeholder Engagement Plan (SEP)

Presented to
Asian Infrastructure Investment Bank

Ezhou Linkong Group Co., Ltd.

July 2024

Table of Contents

1	Project Overview	1
1.1	Project Introduction.....	1
1.2	SEP Objectives.....	4
2	Summary of Completed Stakeholder Engagement Activities.....	6
2.1	Information Disclosure Completed During Preparation	6
2.2	Consultation Activities Completed During the Preparation Period	11
3	Identification and Analysis of Stakeholders.....	19
3.1	Parties Affected by the Project.....	19
3.2	Other Stakeholders	20
3.3	Vulnerable Individuals or Groups	21
3.4	Summary of Stakeholder Needs for the Project.....	22
4	Stakeholder Consultation Plan.....	25
4.1	Purpose and Timing of the Stakeholder Consultation Plan.....	25
4.2	Proposed Information Disclosure Strategy	25
4.3	Proposed Consultation Strategy	31
4.4	Incorporate Opinions of Vulnerable Groups into Proposed Strategy.....	37
4.5	Schedule	40
4.6	Opinion Review	40
4.7	Project Future	41
5	Resources and Responsibilities for Conducting Stakeholder Consultation Activities	42
5.1	Resources	42
5.2	Management Functions and Duties.....	43
6	Grievance Redress Mechanism (GRM).....	45
6.1	Arrangements for Grievance Redress Mechanism.....	45
6.2	Record, Follow-up, and Feedback of Complaints and Grievances.....	49
6.3	Contacts to Express Complaints and Grievances.....	49
7	Monitoring and Report	52
7.1	Stakeholder Engagement in Monitoring Activities	52
7.2	Feedback to Stakeholder Groups	52
	Annex 1: Stakeholder Engagement Survey in Preparation Period	54
	Annex 2: Identification of Stakeholders for Hubei Global Air Cargo Logistics Hub Project (Construction Sub-item)	59
	Annex 3: Interview Record.....	62
	Annex 4: Records of Stakeholder Engagement	64

List of Tables

TABLE 1-1 CONSTRUCTION CONTENTS OF THE PROJECT AND ITS ASSOCIATED FACILITIES.....	3
TABLE 2-1 INFORMATION DISCLOSURE OF THE PROJECT (COMPLETED).....	7
TABLE 2-2 PUBLIC CONSULTATIONS CONDUCTED AND KEY FINDINGS	14
TABLE 3-1 IDENTIFICATION AND ANALYSIS OF PROJECT AFFECTED PARTIES.....	19
TABLE 3-2 IDENTIFICATION AND ANALYSIS OF OTHER STAKEHOLDERS.....	20
TABLE 3-3 IDENTIFICATION AND ANALYSIS OF VULNERABLE GROUPS	21
TABLE 3-4 SUMMARY OF STAKEHOLDERS' NEEDS	22
TABLE 3-5 IDENTIFICATION OF VULNERABLE GROUPS AND THEIR NEEDS	23
TABLE 4-1 PROPOSED INFORMATION DISCLOSURE PLAN.....	27
TABLE 4-2 TEMPLATE OF INFORMATION DISCLOSURE RECORD.....	30
TABLE 4-3 PROPOSED PUBLIC CONSULTATION METHODS	32
TABLE 4-4 PROPOSED PUBLIC CONSULTATION METHODS	36
TABLE 4-5 PROPOSED STRATEGY FOR INCORPORATING THE OPINIONS OF VULNERABLE GROUPS.....	37
TABLE 4-6 SCHEDULE FOR IMPORTANT DECISIONS OF STAKEHOLDERS.....	40
TABLE 5-1 FUNCTIONS AND DUTIES OF STAKEHOLDER ENGAGEMENT	43
TABLE 6-1 GRIEVANCE AND COMPLAINT REGISTRATION FORM	49
TABLE 6-2 INFORMATION ON ORGANIZATIONS AND PERSONNEL HANDLING GRIEVANCES AND COMPLAINTS FROM AFFECTED POPULATION	50
TABLE 7-1 INDICATIVE MONITORING INDICATORS FOR STAKEHOLDER ENGAGEMENT	52

List of Figures

FIGURE 2-1 PUBLIC ANNOUNCEMENT OF PROJECT INFORMATION DURING THE PREPARATION PERIOD (PARTIAL).....	11
FIGURE 6-1 FLOW CHART OF GRM.....	48

Abbreviations

ESF	Environmental and Social Framework
ESIA	Environmental and Social Impact Assessment
ESMP	Environmental and Social Management Plan
ESS	Environmental and Social Standard
GBV	Gender-Based Violence
MOU	Memorandum of Understanding
NMF	Noise Management Framework
PPM	Project-affected People's Mechanism
RAP/RP	Resettlement Action Plan/Resettlement Plan
SEP	Stakeholder Engagement Plan

Weights and Measures

μg	microgram
mg	milligram
g	gram
kg	kilogram
t	ton
cm	centimeter
dm	decimeter
m	meter
km	kilometer
m^2	square meter
m^3	cubic meter
h	hour
d	day
a	year
$^{\circ}\text{C}$	degree centigrade
dB(A)	A-weighted sound level in decibels
pcu	passenger car unit

Executive Summary

This Stakeholder Engagement Plan (SEP) has been prepared for the Hubei Global Air Cargo Logistics Hub Project financed by the Asian Infrastructure Investment Bank. The SEP is a dynamic document that will be refined based on the progress of the Hubei Global Air Cargo Logistics Hub Project and the actual needs of the stakeholders. The SEP has been prepared in accordance with the AIIB's Environmental and Social Framework (ESF), Environmental and Social Standard 1: Environmental and Social Impact Assessment and Management (ESS1), and the AIIB Mission Team's Memorandum of Understanding (MOU) regarding the stakeholder engagement requirements for the Hubei Global Air Cargo Logistics Hub Project.

The SEP identifies the stakeholders of the Hubei Global Air Cargo Logistics Hub Project, recognizes the key stakeholders during the project preparation phase, and assesses their influence on the Project. On this basis, the stakeholders of the Project are summarized and analyzed.

The affected parties of the Project include residents impacted by land acquisition and demolition, residents affected by noise, construction workers, and Huahu Airport staff. Other stakeholders of the Project include the Management Committee of Ezhou Linkong Economic Zone, the Project Management Office (PMO) and subordinate institutions of Ezhou Linkong Group Co., Ltd., relevant local government departments, Hubei International Logistics Airport Co., Ltd., media organizations, design consulting firms, and contractors. (Based on the construction content and characteristics of the Project, no special approvals are required. Relevant government departments will only conduct routine management and supervision of the Project within their jurisdiction.)

Among the affected parties, the Project has further identified vulnerable groups, including low-income individuals, the elderly, and women, and has recognized their primary interests and needs.

Based on the identification and analysis of the Project stakeholders, a corresponding project information disclosure plan (especially related to the environmental and social impacts of the Project), a stakeholder consultation plan and feedback mechanism, as well as grievance redress mechanisms for both the Project and employees, have been developed. The SEP also includes arrangements for organizational support, resources, and environmental and social performance monitoring for the implementation units.

1 Project Overview

1.1 Project Introduction

To promote the development of Ezhou Airport as an international air logistics hub, enhance cross-border interconnectivity and collaborative innovation, and support the growth of the international logistics and trade system under the Belt and Road Initiative, the Asian Infrastructure Investment Bank (AIIB) is providing a USD 400 million loan to the People's Republic of China. The loan will be used for the construction of the Hubei Global Air Cargo Logistics Hub Project, with an implementation period from 2024 to 2028.

The project is located within the Ezhou Airport Comprehensive Bonded Zone in Ezhou City, Hubei Province, China. It covers an area of approximately 1.349 km² and is planned to be constructed in two phases. Among them, Phase I occupies an area of 0.727 km² and has been partially completed. The Type-B Bonded Logistics Center in Phase-I passed on-site acceptance on April 9, 2024. The remaining works are expected to be further expanded in 2024, with the main civil works to be funded by the Client's own funds and scheduled for completion by November 30, 2024. The AIIB project will be built in Phase II, covering an area of 0.622 km². It will incorporate green and smart elements throughout the project to support low-carbon and digitalized operations.

The main construction contents of the AIIB project include customs infrastructure, bonded warehousing and processing facilities, trade and cargo service facilities, low-carbon smart facilities, earthworks, supporting facilities, and capacity building. The photovoltaic system in the self-constructed area of Phase I is also included in this project. The specific construction contents are as follows:

1. Customs Infrastructure

The main construction contents include: T01 Customs Inspection Warehouse (10,911.00 m²), 2# Customs Kiosk (949.00 m²), and Customs Perimeter Fencing (7,730.00 m).

2. Bonded Warehousing and Processing

E01-04 Bonded Processing Warehouse (individual building area: 14,296 m²), E05 Logistics Warehouse (individual building area: 27,798.00 m²), M01 Logistics Warehouse (individual building area: 25,396.00 m²), H01-04 Logistics Warehouse (individual building area: 31,974.00 m²), L01 Logistics Warehouse (individual building area: 36,150.00 m²), J01 Logistics Warehouse (individual building area: 22,866.00 m²), K01 Logistics Warehouse (individual building area: 19,914.00 m²),

Container Truck Ramp 3 (individual building area: 1,589.34 m²), Container Truck Ramps 4-5 (individual building area: 2,111.37 m²). Overhead Platform 2 (building area: 30,059.00 m²), Overhead Platform (building area: 13,058.59 m²), Gatehouse (building area: 113.00 m²), and Equipment Room (building area: 762.00 m²).

3. Trade and Cargo Service Facilities

It mainly includes S01 Duty Free Service Center (10,450.00 m²), W01 Comprehensive Office Building (39,432.16 m²), and the Greening Project for the Business Logistics Center within the self-built area.

4. Low-carbon Smart Facilities

It mainly includes the photovoltaic facilities, intelligent operation system, and comprehensive information platform for the self-built area and the Project.

5. Earthworks

6. Supporting Facilities

1# Elevated Connecting Road with a total length of 430.00 m, 2# Elevated Connecting Bridge with a total length of 511.00 m, Planned Road No.2 with a total length of 518.60 m, Planned Road No.3 with a total length of 990.00 m, Planned Road 4# with a total length of 1075.00 m, Planned Road No. 5 with a total length of 354.00m, and outdoor works.

7. Capacity Building

It mainly includes: LEED certification consulting, green building three-star certification consulting, project management, project monitoring and evaluation, and other capacity building services.

Based on the identification results of associated facilities, Phase I and Wuchu Avenue (Bonded Zone to S203) are considered associated facilities of the AIIB project.

Phase I is located on the south side of the AIIB project. The main construction contents include an International Cargo Terminal, International Express Center, Type-B Bonded Logistics Center, Customs Inspection Center, Quarantine Treatment Center, Business Logistics Center, Bonded Processing Plant, Bonded Logistics Warehouse, Dangerous Goods Warehouse, Garbage Disposal Station, 1# Customs Kiosk, and 3# Customs Kiosk. Phase I commenced construction in September 2023. As of April 9, 2024, the Type-B Bonded Logistics Center in Phase I has passed on-site acceptance. The remaining works are expected to be completed by November 2024.

Wuchu Avenue (Bonded Zone to S203) is located within the Ezhou Linkong Economic Zone. It connects to Huamahu Bridge in the west and extends to S203 (under construction) in the east. The road has a red line width of 55 m and features six lanes in

both directions, with a total length of 1940 m and a design speed of 60 km/h. The primary construction contents include road works, water supply and drainage, cable tunnel, traffic, lighting, landscaping, and ancillary works. The construction of Wuchu Avenue (Bonded Zone to S203) was commenced in June 2023 and completed at the end of June 2024.

See the following table for details of the Project and its associated facilities.

Table 0-1 Construction Contents of the Project and Its Associated Facilities

Project Name	Project Components	Construction Content	Construction Progress	Implementation of Environmental and Social Impact Assessment	Remarks
Hubei Global Air Cargo Logistics Hub Project	Phase-I Project	Type-B Bonded Logistics Center	Completed and passed on-site acceptance on April 9, 2024	The construction phase environmental and social management plan has been incorporated into the construction contract, and due diligence has been conducted	Belongs to the associated facilities of the AIIB project, hereinafter referred to as "Associated Facilities - Phase I".
		International Cargo Terminal	Under construction, expected to be completed on November 30, 2024		
		Quarantine Treatment Center			
		Customs Inspection Center			
		1# and 3# Customs Kiosks			
		Garbage Disposal Station			
		Business Logistics Center	Tendering has not been started yet	Conduct environmental and social impact assessment and propose an environmental and social management plan	
		International Express Center			
		Bonded Processing Plant			
		Bonded Logistics Warehouse			
	Dangerous Goods Warehouse				
	Photovoltaic system	Tendering has not been started yet	Conduct environmental and social impact assessment and propose an environmental and social management plan		
	Phase-II Project			AIIB Project	
	Customs Infrastructure				
	Bonded Warehousing and Processing				
	Trade and Cargo Service Facilities				
Low-carbon Smart Facilities					

Project Name	Project Components	Construction Content	Construction Progress	Implementation of Environmental and Social Impact Assessment	Remarks
		Earthworks			
		Supporting Facilities			
		Capacity Building			
Wuchu Avenue (Bonded Zone to S203)		Water supply and drainage, cable tunnel, traffic, lighting, landscaping, and ancillary works	Construction was commenced in June 2023 and completed at the end of June 2024.	The construction phase environmental and social management plan has been incorporated into the construction contract, and due diligence has been conducted	Belongs to the associated facilities of the AIIB project, hereinafter referred to as "Associated Facility - Wuchu Avenue".

1.2 SEP Objectives

According to the AIIB Environmental and Social Framework (ESF), Environmental and Social Standard 1: Environmental and Social Impact Assessment and Management (ESS1), and the AIIB Mission Team's Memorandum of Understanding (MOU), the Project is classified as a Category-A Environmental and Social project. Based on the AIIB investment project requirements for public consultation and information disclosure, as well as the SEP requirements, stakeholder engagement is an inclusive process that runs throughout the project cycle. The main objectives of stakeholder engagement include (but are not limited to):

- Establish a systematic stakeholder engagement approach to assist the project implementation unit in identifying stakeholders and building and maintaining constructive relationships with them, especially with those affected by the project.
- Inform stakeholders about the project, including its purpose, nature, scale, duration of project activities, and any potential project-related impacts and mitigation plans.
- Identify stakeholders' concerns, needs, complaints, and grievances, and consider their opinions in project design and environmental and social management.

- Obtain stakeholders' feedback on project impacts, especially environmental and social impacts, and mitigation measures.
- Provide feedback to the resettlement area on the handling of complaints and grievances.
- Fully consider stakeholders' concerns during project decision-making and implementation, and avoid and resolve potential conflicts.

2 Summary of Completed Stakeholder Engagement Activities

2.1 Information Disclosure Completed During Preparation

During the project preparation phase, the Management Committee of Ezhou Linkong Economic Zone (referred to as "Linkong Economic Zone" hereafter), Ezhou Linkong Group Co., Ltd. (referred to as "Ezhou Linkong Group" hereafter), the AIIB Project Management Office of Ezhou Linkong Group (referred to as "PMO" hereafter), other relevant government departments, and media units carried out a series of activities related to information disclosure and information transparency for The Project. The publicly disclosed information in the project area includes:

- Public announcement of the basic information of the Hubei Global Air Cargo Logistics Hub Project
- Project initiation information of the Hubei Global Air Cargo Logistics Hub Project
- Land and housing acquisition and demolition standards for the Project, and the approval for urban construction land
- Environmental and social documents of the Project, including the Environmental and Social Impact Assessment (ESIA) and the Environmental and Social Management Plan (ESMP) reports for the Project and the early-stage construction works

See Table 2-1 below for details of information disclosure completed so far.

Table 0-1 Information Disclosure of the Project (Completed)

Time	Location	Stakeholders/Participants	Main Contents	Approach
October 2019	Hubei Provincial Government	Linkong Economic Zone, Ezhou Linkong Group, PMO, Natural Resources and Planning Bureau, and residents within the resettlement area	Notice of the Hubei Provincial People's Government on the Implementation of the Comprehensive Land Price Standards for Land Acquisition in Hubei Province	Government website https://www.hubei.gov.cn/zfwj/ezf/201910/t20191028_1712135.shtml
October 2020	Hubei Provincial Government	Linkong Economic Zone, Ezhou Linkong Group, Yangye Town, etc.	Approval of the Provincial People's Government on the 81st Batch of Urban Construction Land (Land Consolidation) in Ezhou City for the Year 2020	Government documents
February 2022	Towns/townships affected by land acquisition and demolition for the Project	Linkong Economic Zone, Ezhou Linkong Group, PMO, Natural Resources and Planning Bureau of Linkong Economic Zone, and affected towns/townships.	Policies and compensation standards regarding land acquisition and demolition	Public notices
April 2022	Hubei Provincial Government	Linkong Economic Zone, Ezhou Linkong Group, Yanji Town, Yangye Town, etc.	Approval of the Provincial People's Government on the 27th Batch of Urban Construction Land in Ezhou City for the Year 2021	Government documents
September 2022	National Development and Reform Commission	Ezhou Linkong Group, PMO, Linkong Economic Zone, etc.	The Hubei Global Air Cargo Logistics Hub Project has been approved and included in China's 2022-2024 candidate project plan for utilizing loans from the Asian Infrastructure Investment Bank.	Government website https://www.ndrc.gov.cn/fggz/lywzjw/wzgl/202101/t20210108_1264693.html

October 2022	Changjiang Daily	Ezhou Linkong Group, PMO, etc.	The Hubei Global Air Cargo Logistics Hub Project has been included as a candidate project for AIIB loans.	MicroBlog
February 2023	Hubei Provincial Development and Reform Commission	Linkong Economic Zone, Ezhou Linkong Group, PMO, etc.	AIIB and Ezhou Signed the Memorandum of Understanding for Hubei Global Air Cargo Logistics Hub Project	Government website https://fgw.hubei.gov.cn/fbjd/xxgkml/jgz/n/sjg/wjc/gzdt/202302/t20230228_4565389.shtml
February 2023	Ezhou Converged Media	Linkong Economic Zone, Ezhou Linkong Group, PMO, etc.	Publicize the signing of the Memorandum of Understanding between AIIB and Ezhou	WeChat Official Account
August 2023	Linkong Economic Zone	Management Committee of Linkong Economic Zone, Ezhou Linkong Group, PMO, etc.	Approval of the Feasibility Study Report on the Port Operations of the Hubei Global Air Cargo Logistics Hub Project at Ezhou Airport Comprehensive Bonded Zone (Phase I)	Government website https://lkjjq.ezhou.gov.cn/xxgk/fdzdgknr/zdjsxm/pzjgxx/202308/t20230817_567806.shtml
August 2023	Linkong Economic Zone	Management Committee of Linkong Economic Zone, Ezhou Linkong Group, etc.	Approval of the Preliminary Design for the Port Operations of the Hubei Global Air Cargo Logistics Hub Project at Ezhou Airport Comprehensive Bonded Zone (Phase I)	Government website https://lkjjq.ezhou.gov.cn/xxgk/fdzdgknr/zdjsxm/pzjgxx/202308/t20230817_567806.shtml
September 2023	Ezhou Linkong Group	AIIB, Ezhou Linkong Group, PMO, environmental and social units, etc.	ESIA and ESMP reports for the early-stage construction works of the Hubei Global Air Cargo Logistics Hub Project	File report
September 2023	AIIB	AIIB, National Development and Reform Commission,	Public Announcement of Project Information for the Hubei Global Air Cargo	AIIB website https://www.aiib.org/en/

		Ezhou Linkong Group	Logistics Hub Project	projects/details/2023/proposed/China-Hubei-Global-Air-Cargo-Logistics-Hub-Project.html
--	--	---------------------	-----------------------	---

Source: PMO of Ezhou Linkong Group

The screenshot shows the official website of the Hubei Provincial Development and Reform Commission. The main navigation bar includes '首页', '机构设置', '工作聚焦', '政府信息公开', '办事服务', '互动交流', and '数据发布'. The article title is '亚投行与鄂州签署湖北国际航空货运项目合作备忘录'. The content states that on February 21st, the Asian Infrastructure Investment Bank (AIIB) visited Ezhou City to examine the project. It also mentions that the project was approved by the AIIB in October 2022 with a loan of 400 million USD.

AIIB and Ezhou Signed the Memorandum of Understanding for the Hubei Global Air Cargo Logistics Hub Project (by Hubei Provincial Development and Reform Commission)

The screenshot shows the AIIB project information page for 'China: Hubei Global Air Cargo Logistics Hub Project'. The page includes a summary table with the following details:

STATUS	MEMBER	SECTOR	E&S CATEGORY
Proposed	China	Transport	Category A

PROJECT NUMBER: 000770

PROPOSED FUNDING AMOUNT	FINANCING TYPE
USD400 million	Sovereign

TIMELINE

Public Announcement of Project Information for the Hubei Global Air Cargo Logistics Hub Project (by AIIB)

000881

湖北省人民政府文件

鄂政发〔2019〕22号

省人民政府关于公布实施 湖北省征地区片综合地价标准的通知

各市、州、县人民政府，省政府各部门：

为进一步加强和改进征地服务与管理，切实维护被征地农民的合法权益，深入推进乡村振兴战略实施，促进全省经济高质量发展，根据国家有关规定和全省经济发展状况，省人民政府决定对征地补偿标准进行调整。现将调整后的《湖北省征地区片综合地价标准》公布，并将有关事项通知如下：

一、本征地区片综合地价标准由土地补偿费和安置补助费两部分构成，其中土地补偿费占40%、安置补助费占60%。经批准占用永久基本农田的，征地补偿按所在县（市、区）最高标准执行。因非农建设需要收回农林牧渔场等国有土地的，参照本标准执行。

— 1 —

二、本标准实施前已依法获得征地批准，且市（州）、县（市、区）人民政府已制定并公告征地补偿安置方案的，可以按公告确定的标准执行；本标准实施前已依法获得征地批准，但市（州）、县（市、区）人民政府未制定且未公告征地补偿安置方案的，按本标准执行。

三、各市（州）人民政府应于本标准公布后三个月内，根据本地经济发展水平和实际情况，制定本地区被征收土地上的附着物和青苗补偿标准，并报省自然资源厅备案。

四、征地补偿标准的执行事关被征地农民切身利益和社会稳定，各级人民政府及有关部门务必高度重视，加强组织领导，层层压实责任，切实做好新旧征地补偿标准的衔接转换工作。要加强政策宣传解读，营造良好氛围，妥善解决实施过程中出现的问题。

五、本标准从2019年11月1日起执行，《省人民政府关于公布湖北省征地区片综合地价标准的通知》（鄂政发〔2014〕12号）同时废止。

附件：湖北省征地区片综合地价标准



— 2 —

Notice on Publishing and Implementing the Comprehensive Land Price Standards for Land Acquisition Areas in Hubei Province (by Hubei Provincial People's Government)

编号：ZDA2022-2001

鄂州市 2021 年度第 27 批次城市建设用地

征收土地协议书

立协议方：

- 甲方：鄂州市临空经济区管理委员会
- 乙方：鄂州市临空经济区燕矶镇坝角村、车湖村
- 丙方：鄂州市临空经济区燕矶镇人民政府

2022年 2月 24日

1

征收土地协议书

- 甲方：鄂州市临空经济区管理委员会
- 乙方：鄂州市临空经济区燕矶镇坝角村、车湖村
- 丙方：鄂州市临空经济区燕矶镇人民政府

根据《中华人民共和国土地管理法》、《湖北省土地管理实施办法》、《鄂州市国土资源管理办法》以及有关文件的规定，甲方在乙方辖区内征收土地，经甲、乙、丙三方协商达成协议如下：

一、征收土地的地点、范围、面积、地类及用途

本次征收土地的地点位于鄂州市临空经济区燕矶镇坝角村、车湖村，具体范围详见规划绿线图、勘测定界图，征收土地总面积196.90047亩，地类详见附表1，用途为物流仓储用地。

二、征收土地的各项补偿（助）费

1、依据湖北省人民政府《关于公布实施湖北省征地区片综合地价标准的通知》“鄂政发〔2019〕22号”文件的规定，196.90047亩征地补偿（助）费合计如下：

青苗补偿费按2100.00元/亩补偿，196.90047亩合计补偿金额：肆拾壹万叁仟肆佰玖拾玖元玖角玖分（小写：413,490.99元）。

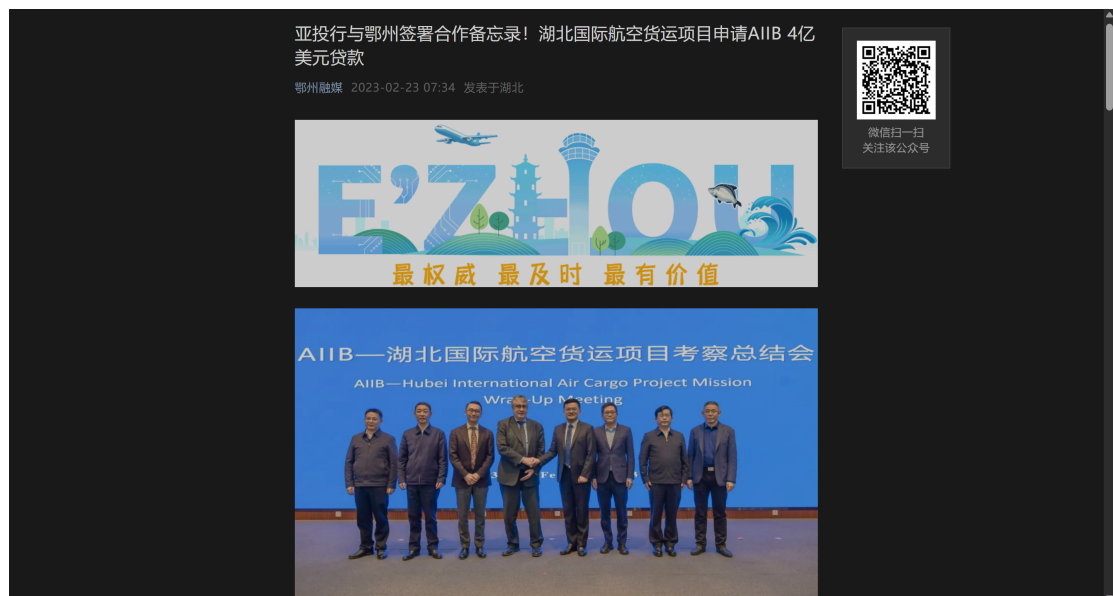
土地补偿费和安置补助费按55,200.00元/亩补偿，196.90047亩合计补偿金额：壹仟零捌拾陆万捌仟玖佰零伍元玖角肆分（小写：10,816,805.94元）。

2

Land Acquisition Agreement (by Management Committee of Linkong Economic Zone)



Approval of the Preliminary Design for the Port Operations of the Hubei Global Air Cargo Logistics Hub Project at Ezhou Airport Comprehensive Bonded Zone (Phase I) (by Management Committee of Linkong Economic Zone)



Publicize the signing of the Memorandum of Understanding between AIIB and Ezhou (by Ezhou Convergence Media)

Figure 0-1 Public Announcement of Project Information During the Preparation Period (Partial)

2.2 Consultation Activities Completed During the Preparation Period

During the project preparation period, the Management Committee of Linkong Economic Zone, Ezhou Linkong Group, PMO, and Central-Southern Safety &

Environmental Technology Institute Co., Ltd., conducted a social impact survey and extensive public participation and consultation for the Hubei Global Air Cargo Logistics Hub Project, initially identifying the project's stakeholders. Subsequently, based on the initially identified stakeholders, the AIIB PMO of Ezhou Linkong Group organized a series of seminars and key informant interviews. The institutions and individuals participating in the seminars and interviews mainly included:

- Relevant government departments: Municipal Development and Reform Commission, Municipal Department of Finance, Management Committee of Linkong Economic Zone, related bureaus governing the Linkong Economic Zone (Ecology and Environment Bureau, Natural Resources and Planning Bureau, Social Affairs Bureau, Organization and Human Resources Bureau, Rural Revitalization Bureau, Women's Federation), and Hubei International Logistics Airport Co., Ltd., etc.
- Yanji Town Resettlement Area, Yangye Town Resettlement Area, etc.

In the public participation activities that have been conducted, the main activity processes are as follows:

- The AIIB PMO of Ezhou Linkong Group introduced and publicized the objectives and contents of the Hubei Global Air Cargo Logistics Hub Project.
- The AIIB PMO of Ezhou Linkong Group introduced the project's environmental and social impacts, the purpose of public participation research, and the AIIB's requirements for public participation and its environmental and social policies.
- Communicated with relevant government departments, town/townships, and neighborhood committees in resettlement areas to obtain relevant social baseline data and information.
- Stakeholders' participants freely expressed their opinions and suggestions regarding the project construction and their respective concerns.

The main results of public participation found through seminars and key informant interviews are as follows:

- All stakeholders' participants recognized and strongly supported the Hubei Global Air Cargo Logistics Hub Project and the construction of the Hubei Global Air Cargo Logistics Park.
- During the project preparation period, it is necessary to engage in meaningful consultations with all stakeholders. Based on the results and findings of these consultations, optimize the project design to minimize impacts on surrounding

resettlement areas during implementation. Throughout the entire project cycle, special attention should be given to inclusive arrangements for vulnerable groups, such as the elderly, women, and low-income populations in the resettlement areas.

● The ESIA unit conducted field surveys and public opinion consultations, with the main findings as follows:

a. Residents hope to reduce the negative impacts of project construction, such as dust, noise, and soil/water pollution.

b. Most of the residents in the affected resettlement areas support the proposed Hubei Global Air Cargo Logistics Hub Project.

c. Residents generally expressed that the primary benefit of the project would be the increase in employment opportunities.

d. Women showed a positive attitude towards the project in terms of recognition and participation, expressing hope that the project would provide them with employment opportunities (for detailed analysis results of the survey, please refer to the ESIA).

e. The grievance and feedback mechanism is operating effectively. Residents can provide feedback through community groups and resettlement areas. Additionally, if residents encounter project-related issues, they can directly report them to local neighborhood committee officials and the resettlement area. After receiving feedback, the neighborhood committee officials and resettlement area will convey the concerns to relevant departments such as the PMO, Ezhou Linkong Group, and the Management Committee of Linkong Economic Zone, which will then work out appropriate solutions.

Table 0-2 Public Consultations Conducted and Key Findings

Time	Location	Stakeholders' Participants	Consultation Contents	Adopted Method	Results
February 2023	Ezhou Linkong Group	Hubei Provincial Department of Finance	Project memorandum	Seminars	➤ All parties signed the project memorandum
		Hubei Provincial Development and Reform Commission			
		Management Committee of Linkong Economic Zone			
		Ezhou Linkong Group Consulting Unit			
March 2023	Ezhou Linkong Group	Ezhou Linkong Group	Establishment of AIIB PMO	Seminars	➤ It was decided to establish the AIIB PMO, which will be responsible for the daily management, bidding and procurement, financial management, project construction, environmental protection, resettlement, and communication and coordination during the project preparation and implementation phases.
May 2023	Ezhou Linkong Group	AIIB Expert Panel	Discussion meeting of project feasibility study report	Seminars	➤ AIIB provided guidance on the feasibility study report for further refinement and revisions.
		Management Committee of Linkong Economic Zone			
		Ezhou Linkong Group Consulting Unit			
July 2023	Ezhou Linkong	Ezhou Linkong Group	Report on the	Seminars	Summarize the project components, progress updates, and

	Group	PMO	Overview of the Hubei Global Air Cargo Logistics Hub Project		expected timeline, specifically: ➤ Discussion on the feasibility study report of the Project; ➤ The latest updates on parallel financing project activities; ➤ The latest updates on subsequent project activities
		AIIB Task Force		Online meeting	
		FSR Consultant			
July 2023	Ezhou Linkong Group	Ezhou Linkong Group	Financial Management of the Hubei Global Air Cargo Logistics Hub Project	Seminars	➤ Assessed the capacity of the PIU, identified gaps between the financial management arrangements/financial management system proposed for the project and AIIB's financial management requirements, and reached an agreement on the financial management arrangements for the project. ➤ Discussed the arrangements for counterpart funding, including the flow of funds, budget estimates, etc.
		Hubei Provincial Department of Finance			
		AIIB Task Force			
		PIU Finance Team			
December 2023	Ezhou Linkong Group	AIIB PMO of Ezhou Linkong Group	Discuss the work plan for the field survey on resettlement and social assessment	Seminars	➤ Clarified the work plan and schedule for the resettlement and social assessment survey, etc. ➤ Provided a series of forms for the inventory survey, verified the physical quantities affected by resettlement, and provided a list of policy documents; ➤ Determined the specific arrangements for the questionnaire survey and field reconnaissance in each project area, and select the resettlement areas and sample sizes for the survey.
		ESIA Unit			
December 2023	Ezhou Linkong Group	PMO	Learned and collected information on resettlement and	Seminars	➤ Collected relevant data and information on land acquisition and house demolition involved in the Project. ➤ Learned the local social assistance & subsidy standards and the implementation of employment-related supporting
		Natural Resources and Planning Bureau			
		Social Affairs Bureau			

		Organization and Human Resources Bureau	social impacts of the Project.		<p>policies.</p> <ul style="list-style-type: none"> ➤ Learned the relevant policies and measures to protect the legal rights and interests of women and children within the scope of the Project.
		Women's Federation			
		ESIA Unit			
December 2023	Huahu Airport	PMO	Construction of associated project and collection of opinions	Seminars	<ul style="list-style-type: none"> ➤ Learned the information and future development of the associated project (Ezhou Huahu Airport) under the Hubei Global Air Cargo Logistics Hub Project. ➤ The person in charge of Huahu Airport expressed strong support for the Project and provided some positive suggestions and recommendations.
		Hubei International Logistics Airport Co., Ltd.			
		ESIA Unit			
December 2023	Construction site of the early-stage construction project	PMO	Social impacts at project construction site	Seminars	<ul style="list-style-type: none"> ➤ Investigated the project construction environment and current construction progress on site. ➤ Collected information on the project contractor's institutional development, construction training, labor rights, and other related aspects.
		Contractor		Key informant interviews	
		ESIA Unit		Site survey	
December 2023	Project Affected Town/Townships	PMO	Find out the project's resettlement and social impacts	Seminars	<ul style="list-style-type: none"> ➤ Learned the basic information and specific circumstances of the interviewees. ➤ Learned the status of project information disclosure and public participation. ➤ Learned the project's environmental and social impacts. ➤ Collected interviewees' opinions and suggestions on the project's land acquisition and demolition issue.
		Yanji Town Government (Chehu Village, Bajiao Village and Duwan Village)		Questionnaire	
		Residents in the resettlement area		Key informant interviews	
		ESIA Unit		Site survey	
December 2023	Project Affected Town/Townships	PMO	Find out the project's	Seminars	<ul style="list-style-type: none"> ➤ Learned the basic information and specific circumstances of the interviewees.
		Yangye Town		Questionnaire	

		Government (Gutang Village)	resettlement and social impacts		➤ Learned the status of project information disclosure and public participation.
		Residents in the resettlement area		Key informant interviews	➤ Learned the project's environmental and social impacts. ➤ Collected interviewees' opinions and suggestions on the project's land acquisition and demolition issue.
		ESIA Unit		Site survey	
December 2023	Project Affected Town/Townships	PMO	Find out the project's resettlement and social impacts	Seminars	➤ Learned the basic information and specific circumstances of the interviewees.
		Shawo Township Government (Zouma Village)		Questionnaire	➤ Learned the status of project information disclosure and public participation.
		Residents in the resettlement area		Key informant interviews	➤ Learned the project's environmental and social impacts. ➤ Collected interviewees' opinions and suggestions on the project's land acquisition and demolition issue.
		ESIA Unit		Site survey	
December 2023	Ezhou Linkong Group	AIIB Expert Panel	Inspection by AIIB Expert Panel	Seminars	➤ Learned the current project progress and inspected the construction site. ➤ Discussed and provided suggestions on the project implementation unit's implementation capacity, the project's environmental and social assessment work, project finance, and project procurement. ➤ Summarized and signed the meeting memorandum.
		Management Committee of Linkong Economic Zone			
		AIIB PMO of Ezhou Linkong Group			
		Consulting Unit			
April 2024	Ezhou Linkong Group	AIIB Expert Panel	Inspection by AIIB Expert Panel	Seminars	➤ Discuss and negotiated changes to the project design, and redefine the new project scope. ➤ Discussed and provided suggestions on the project implementation unit's implementation capacity, the project's environmental and social assessment work, project finance, and project procurement.
		Management Committee of Linkong Economic Zone			
		AIIB PMO of Ezhou Linkong Group			

		Consulting Unit			➤ Summarized and signed the meeting memorandum.
June 2024	Ezhou Linkong Group	AIIB Expert Panel	Project Report	Online meeting	<ul style="list-style-type: none"> ➤ Due to project changes, all parties discussed and revised the original reports, including ESIA/ESMP, RP, SEP, and NMF. ➤ AIIB experts provided modification opinions for original reports based on project changes, and set the time limit for report modification and submission.
		AIIB PMO of Ezhou Linkong Group			
		Consulting Unit			

Source: PMO of Ezhou Linkong Group, field investigation and interviews

3 Identification and Analysis of Stakeholders

Stakeholders refer to individuals or groups who can affect or are affected by or benefit from the project implementation.

Project stakeholders include: 1) affected parties; 2) other stakeholders; and 3) vulnerable groups.

(1) Affected parties: individuals or groups who are or may be affected by the project (including directly or indirectly affected persons).

(2) Other stakeholders: individuals or groups who may have an interest in the project.

(3) Vulnerable groups: the elderly, women, and low-income individuals affected by the project.

See Table 3-1, Table 3-2 and Table 3-3 for the specific identification and analysis of parties affected by the Project.

As previously mentioned, the construction content of the Hubei Global Air Cargo Logistics Hub Project mainly includes customs infrastructure, bonded warehousing and processing, trade and cargo service facilities, digitalization, and supporting facilities. During the project preparation phase, we have conducted an environmental and social impact assessment for the Hubei Global Air Cargo Logistics Hub Project, involving extensive surveys, consultations, and negotiations. Therefore, based on the project's construction content, nature, and characteristics, as well as the conducted social surveys and consultation activities, specific stakeholder identification information for each sub-project activity is detailed in *Annex 2*. The stakeholders are summarized as follows:

3.1 Parties Affected by the Project

The parties affected by the Project include residents in the resettlement area affected by land acquisition and demolition, residents around the project construction site, on-site workers of the project construction, on-site workers of the associated facility - Wuchu Avenue, staff of Huahu Airport, etc.

The specific identification and analysis of project-affected parties are detailed in Table 3-1.

Table 0-1 Identification and Analysis of Project Affected Parties

Category	Stakeholders	Impact of/on the Project
Parties affected by the Project	Residents in the project area affected by land acquisition and demolition	The Project involves two townships: Yanji Town and Yangye Town. The Project requires the acquisition of 814.2 mu of collective land, affecting 275 households and 1,074 people in Duwan Village and Chehu Village of Yanji Town, within the Ezhou Linkong Economic Zone.
	Residents around the project construction site	They will need to bear the potential noise, dust, and traffic safety risks that may arise during the project construction period.
	On-site workers for project construction	They will need to bear the potential occupational health and safety risks that may arise during the project construction period.
	On-site workers of the associated facility - Wuchu Avenue	They will need to bear the potential occupational health and safety risks that may arise during the project construction period.
	Staff of Huahu Airport	The increase in passenger and cargo throughput at the airport will correspondingly increase employment opportunities with airlines, enhance economies of scale, and boost the occupational pride of airport staff.

Source: project environmental and social impact survey, interviews and consultations with relevant departments.

3.2 Other Stakeholders

Other stakeholders include the PMO of Ezhou Linkong Group and its subordinate institutions, relevant local government departments, Hubei International Logistics Airport Co., Ltd., media units, design consulting firms, and contractors. The specific identification and analysis of other stakeholders are detailed in Table 3-2.

Table 0-2 Identification and Analysis of Other Stakeholders

Category	Stakeholders	Role (Impact of/on the Project)
Other stakeholders	PMO of Ezhou Linkong Group	Responsible for formulating the overall project implementation plan, supervising and guiding the implementation units of each sub-project to complete the plan and related tasks, and promoting project implementation.
	Natural Resources and Planning Bureau of Linkong Economic Zone	Responsible for land acquisition and house demolition involved in the project, and assisting with related approval procedures.
	Social Affairs Bureau of Linkong Economic Zone	Responsible for implementing social assistance/subsidy standards and supporting policies, such as subsistence allowances and five guarantees.
	Organization and Human Resources Bureau of Linkong Economic Zone	Responsible for implementing policies related to skill training and employment promotion for relocated residents.
	Economic Development Bureau of Linkong Economic Zone	Responsible for overseeing the initial stages of the project and approving and submitting investment projects according to regulatory authority.
	Financial Bureau of Linkong Economic	Responsible for managing the financial plan of the Project and AIIB investment loan activities.

Category	Stakeholders	Role (Impact of/on the Project)
	Zone	
	Women's Federation of Linkong Economic Zone	Protect the legitimate rights and interests of women and children in the jurisdiction.
	Contractor	Carry out construction according to the project design and be responsible for the environmental and social impacts at the construction site.
	Hubei International Logistics Airport Co., Ltd.	The completion of the Project will enhance the cargo warehousing level and capacity of Huahu Airport, significantly increasing the airport's cargo throughput.
	Design consulting unit (e.g., feasibility study/environmental impact assessment units)	Learn the needs of stakeholders and optimize the design.
	Media	Responsible for publicizing the Project and informing the general public about various aspects of the Project.

Source: project environmental and social impact survey, interviews and consultations with relevant departments.

3.3 Vulnerable Individuals or Groups

The vulnerable groups of the Project include: the elderly, women, and low-income individuals.

The construction of the Hubei Global Air Cargo Logistics Hub Project may have greater impacts on the elderly and women in nearby townships and villages due to noise and air pollution. Additionally, female employees may face higher occupational health risks during the project construction process. Moreover, as the Project involves large-scale civil engineering, land acquisition compensation, and livelihood restoration, vulnerable groups may be at a disadvantage in the distribution of benefits.

See Table 3-3 for the specific identification and analysis of vulnerable groups.

Table 0-3 Identification and Analysis of Vulnerable Groups

Category	Stakeholders	Role (Impact of/on the Project)
Vulnerable groups	Elderly	Reduce the impacts of noise, dust, and other disturbances during the project construction; provide dedicated information disclosure methods
	Women	Ensure that female residents are less affected by noise, dust, and construction emissions during the project construction and operation; ensure equal pay for female workers and male workers, and guarantee the occupational health and safety of female employees
	Low-income population	The project construction impacts existing livelihoods, requiring the provision of more job opportunities during project implementation

Source: project environmental and social impact survey, interviews and consultations with relevant departments.

3.4 Summary of Stakeholder Needs for the Project

Based on the different roles of stakeholders in the Project, we conducted an environmental and social impact survey on various stakeholders through methods such as focus group discussions, key informant interviews, and questionnaires. We have preliminarily identified the needs of different stakeholders for the Project, such as preferred notification methods and potential special requirements, as well as their needs for information disclosure and consultation at different stages of project implementation. See Table 3-4 for specific analysis.

Table0-4Summary of Stakeholders' Needs

Category	Stakeholders	Preferred Method of Notification	Needs and Interests	Possible Special Needs
Parties affected by the Project	Residents in the project area affected by land acquisition	Written notice, telephone, and broadcast in the resettlement area	<ul style="list-style-type: none"> ➤ Obtain full compensation and be properly resettled according to policies ➤ Hope to get employment opportunities and increase income 	Full compensation for ground attachments and repair of public roads
	Residents around the project construction site	Written notice, telephone, and broadcast in the resettlement area	<ul style="list-style-type: none"> ➤ Accelerate the construction progress and shorten the project duration as much as possible ➤ Hope that the contractor will take appropriate measures to reduce noise, dust, and traffic hazards caused by the construction. 	/
	On-site workers for project construction	Written notice, telephone, and seminars	<ul style="list-style-type: none"> ➤ More guarantee measures for construction safety ➤ Develop a more reasonable dust control construction plan ➤ Receive timely remuneration according to the labor provided 	Regular training
	On-site workers of the associated facility - Wuchu Avenue	Written notice, telephone, and seminars	<ul style="list-style-type: none"> ➤ More guarantee measures for construction safety ➤ Receive timely remuneration according to the labor provided 	Daytime meetings
	Staff of Huahu Airport	Written notice, e-mail, telephone, and seminars	<ul style="list-style-type: none"> ➤ Hope that the completion of the Hubei Global Air Cargo Logistics Hub Project will help enhance the cargo throughput of Huahu Airport 	Daytime meetings

			➤ Provide more jobs and higher wages	
Other interested parties	AIIB PMO of Ezhou Linkong Group	<ul style="list-style-type: none"> •Access to loans; •Smooth implementation of the project 	Government official documents, emails, seminars, telephone	Consultation activities on weekdays, requiring face-to-face meetings
	Relevant government agencies and departments	<ul style="list-style-type: none"> •Smooth implementation of the project 	Written notice, telephone	Consultation activities on weekdays, requiring face-to-face meetings
	Design consulting unit (e.g., feasibility study/environmental impact assessment units)	<ul style="list-style-type: none"> •Smooth project implementation with revenue and operating profit 	Government official documents, emails, seminars, telephone	Daytime meetings
	Contractor	<ul style="list-style-type: none"> •Smooth project implementation with revenue and operating profit 	Government official documents, emails, seminars, telephone	Daytime meetings
	Media	<ul style="list-style-type: none"> •Design and implement relevant publicity and education activities 	Government official documents, emails, seminars, telephone	Daytime meetings

Sources: Project environmental and social impact surveys, interviews, and consultations with relevant departments.

To ensure that vulnerable groups can fully participate in the project and safeguard their rights during the implementation and operation of the project, special attention was paid to the main characteristics and needs of these groups during the social impact survey and public participation of the Hubei Global Air Cargo Logistics Hub Project. The identification of vulnerable groups and their needs are detailed in Table 3-5.

Table 0-5 Identification of Vulnerable Groups and Their Needs

Vulnerable groups	Needs and Interests	Recommended Participation Method	Special Needs
Elderly	<ul style="list-style-type: none"> ➤ Reduce the impact of noise and dust generated during project construction and operation on the travel and health of the elderly 	<ul style="list-style-type: none"> ➤ Meeting of residents from villages in the project area ➤ Daily publicity of the Party-mass Service Center 	<ul style="list-style-type: none"> ➤ Daytime meetings

Women	<ul style="list-style-type: none"> ➤ Reduce the occupational safety risks of female labors that may exist during project construction; ➤ Priority access to employment opportunities; ➤ Women's opinions are fully considered in public consultations 	<ul style="list-style-type: none"> ➤ Village committees' bulletin boards in the project area ➤ Seminars 	<ul style="list-style-type: none"> ➤ Schedule meetings during weekends or evenings to accommodate free time
Low-income groups	<ul style="list-style-type: none"> ➤ Give priority to creating jobs and obtain project benefits through multiple channels ➤ Opinions expressed in public consultations can be fully considered 	<ul style="list-style-type: none"> ➤ Residents' representative assembly ➤ Bulletin boards in resettlement area ➤ Home interview 	<ul style="list-style-type: none"> ➤ Schedule meetings during weekends or evenings to accommodate free time

Source: Project environmental and social impact surveys, interviews, and consultations with relevant departments.

4 Stakeholder Consultation Plan

4.1 Purpose and Timing of the Stakeholder Consultation Plan

The SEP is formulated based on stakeholder analysis, particularly the analysis of stakeholder participation needs. Different stakeholders are engaged in various sub-project activities according to the three phases: project preparation, project implementation, and operation. According to the analysis, the participation needs of various stakeholders are generally consistent during the project implementation and operation phases.

The objectives of the Stakeholder Consultation Plan are: i) to regularly consult with key stakeholder institutions to inform them about the project's purpose, design, content, and activities; ii) to establish a transparent communication mechanism to ensure that stakeholders' needs and requests are met.

During the project preparation period, the Management Committee of Linkong Economic Zone, Ezhou Linkong Group, and the AIIB PMO of Ezhou Linkong Group conducted environmental and social impact assessments for the Hubei Global Air Cargo Logistics Hub Project, carrying out extensive public consultations and participation. Stakeholder feedback has been considered in the project design.

During the project implementation and operation phases, the Management Committee of Linkong Economic Zone, Ezhou Linkong Group, and the PMO should hold ad-hoc environmental and social issue coordination meetings as needed to ensure that relevant environmental and social plans are properly implemented. Ezhou Linkong Group will publish project progress information, environmental and social performance information, etc., on its official website **quarterly** for public review. Additionally, stakeholder consultation activities will be held **at least once every six months** in the resettlement areas within the project zone to communicate with the public regarding project objectives, implementation information, environmental and social impacts, and measures taken. Relevant information on project progress and achievements will be released, and public concerns and questions will be addressed.

4.2 Proposed Information Disclosure Strategy

The information to be disclosed at different stages of the project and the methods of information disclosure need to be tailored to local conditions. The project needs to promptly release environmental and social information at appropriate locations, enabling stakeholders to provide comprehensive feedback on project design and implementation.

The methods of information disclosure mainly include:

- Government or Employer's website
- Government bulletin board
- Notice boards of townships and villages in the project area
- Bulletin boards in the airport
- Push via SMS or Wechat Official Account

Based on the activities and characteristics of the Hubei Global Air Cargo Logistics Hub Project and stakeholder identification, the proposed information disclosure plan is shown in Table 4-1.

The information disclosure plan is dynamic. During the project process, the Management Committee of Linkong Economic Zone, Ezhou Linkong Group, and the AIIB PMO of Ezhou Linkong Group will update this plan for implementation.

The Management Committee of Linkong Economic Zone, Ezhou Linkong Group, and AIIB PMO of Ezhou Linkong Group must keep complete records of all disclosed information. Table 4-2 provides a template for the information disclosure record.

Table 0-1 Proposed Information Disclosure Plan

Project Stage	List of Disclosed Information	Proposed Method	Location/Date	Target Stakeholders	Responsible Agency
Preparation	Project information (mainly including project nature, scale, duration, etc.).	Internet Bulletin board Seminars	Government website Government bulletin board Bulletin boards for villages in the project area Bulletin Boards for townships and towns in the project area December 2023	Ezhou Linkong Group Management Committee of Linkong Economic Zone Village residents in the project area Consulting and design institutes	Ezhou Linkong Group Township/village leaders in the project area
	Environmental and social documents, including the Environmental and Social Management Plan, Stakeholder Engagement Plan, Resettlement Plan, etc.	Internet Seminars Bulletin board	Website of Ezhou Linkong Group AIIB official website July 2024	Ezhou Linkong Group AIIB PMO of Ezhou Linkong Group Residents in the resettlement area Consulting and design institutes	Ezhou Linkong Group Project Implementation Unit (PIU)
	Announcement of stakeholder consultation results	Internet Bulletin board Seminars Door-to-door publicity	Government website Bulletin boards in resettlement area July 2024	Ezhou Linkong Group Linkong Economic Zone Villages in the project area Contractor Consulting and design institutes	Ezhou Linkong Group Project Implementation Unit (PIU) Village leaders in the project area
Implementation and operation stage	Project information (including project approval information, significant design change information, bidding information, construction-related information, quality and safety supervision information, completion-related information, etc.)	Internet Bulletin board Seminars	Website of Ezhou Linkong Group Website of Management Committee of Linkong Economic Zone Bulletin boards for villages in the project area Project Department of the Contractor	Website of Ezhou Linkong Group Management Committee of Linkong Economic Zone Village residents in the project area Contractor Consulting and design institutes	Ezhou Linkong Group Project Implementation Unit (PIU) Construction contractor Environmental and social managers in townships and villages within the project area

			2024-2028 (Quarterly)		
	Safety, worker working conditions, and occupational health policy, work processes, personal protective equipment, etc. in the project area	Internet Bulletin board Seminars Door-to-door publicity	Government website Street bulletin board Project Department of the Contractor Bulletin boards for villages in the project area 2024-2028 (Quarterly)	Ezhou Linkong Group Contractor Village leaders in the project area	Ezhou Linkong Group Contractor Township and village leaders in the project area
	Lecture on knowledge of road traffic safety	Knowledge lectures	Contractor Villages in the project area 2024-2028 (Quarterly)	Village residents in the project area Construction worker	Ezhou Linkong Group Project Implementation Unit (PIU) Contractor Village leaders in the project area
	Safety, worker working conditions, and occupational health policy, work processes, personal protective equipment, etc. in the project resettlement area	Education and training	Contractor 2024-2028 (Quarterly)	Construction worker	Ezhou Linkong Group Contractor
	Construction progress of the Project	Internet Bulletin board Seminars Training materials, pocket books, publicity foldouts, etc.	Government website Bulletin boards in the project area New media platforms Bulletin boards for villages in the project area 2024-2028 (Quarterly)	Village residents in the project area Construction worker	Ezhou Linkong Group Project Implementation Unit (PIU) Village leaders in the project area
	Project grievance mechanism	Internet Bulletin board Seminars	Government website Bulletin boards in the project	Ezhou Linkong Group Villages in the project area	Ezhou Linkong Group Project Implementation

			<p>construction area</p> <p>Bulletin boards for villages in the project area</p> <p>Project Department of the Contractor</p> <p>December 2023; maintained throughout the entire project duration</p>	<p>PIU</p> <p>Project Department of the Contractor</p>	<p>Unit (PIU)</p> <p>Village leaders in the project area</p> <p>Contractor</p>
	Monitoring reports	Internet Seminars	<p>Government website</p> <p>2024-2028 (every half a year)</p>	<p>Ezhou Linkong Group</p> <p>PIU</p> <p>AIIB</p>	<p>Ezhou Linkong Group</p> <p>Project Implementation Unit (PIU)</p> <p>AIIB</p>
	Announcement of stakeholder consultation results	<p>Internet Bulletin board</p> <p>Seminars</p> <p>Door-to-door publicity</p>	<p>Government website</p> <p>Bulletin boards in the project area</p> <p>Bulletin boards for villages in the project area</p> <p>2024-2028 (Quarterly)</p>	<p>Ezhou Linkong Group</p> <p>Management Committee of Linkong Economic Zone</p> <p>Village residents in the project area</p> <p>Construction worker</p> <p>Consulting and design institutes</p>	<p>Ezhou Linkong Group</p> <p>Project Implementation Unit (PIU)</p> <p>Village leaders in the project area</p> <p>Contractor</p>

Table 0-2 Template of Information Disclosure Record

Information Disclosed	Location	Method	Target Stakeholder	Responsible Agency

4.3 Proposed Consultation Strategy

In the process of implementing stakeholder engagement, Ezhou Airport Group will adopt the following strategies:

- Start as early as possible and continue throughout the entire project duration
- Mutual assistance among various government departments
- Timely disclosure of project and environmental & social information
- Establish partnerships with resettlement areas
- Focus on the relationship between contractors and resettlement areas
- Handle complaints in a timely and proper manner

Stakeholder consultation is a two-way process that will be conducted throughout the entire project lifecycle. The overall principles of stakeholder engagement are as follows:

- Collect Initial feedback related to the proposed project and use it to influence project design from the early stages of the planning process;
- Encourage stakeholder feedback, particularly as a means of consulting on project design and involving stakeholders in identifying and mitigating environmental and social risks and impacts.
- Consider and respond to feedback to support active and widespread participation of all parties affected by the project.

Stakeholder consultation for the Project includes the preparation, implementation, and operation phases. The proposed SEP is detailed in Table 4-3.

All public consultations and participation will be documented. Table 4-4 provides a template for the public participation record.

Table 0-3 Proposed Public Consultation Methods

Project Stage	Negotiation Topics	Adopted Method	Location/Date	Target Stakeholders	Organizer
Preparation	Identification and division of project contents Identification of potential project stakeholders	Discussions and seminars	Relevant government offices February 2024 to July 2024	Relevant government units Provincial and municipal government departments PIU	Ezhou Linkong Group AIB PMO of Ezhou Linkong Group PIU
	Environment-related approvals and qualification certificates required for various activities of the Project	Discussions and interviews	Conference room of Ecology and Environment Bureau under Linkong Economic Zone February 2024 to July 2024	Ezhou Linkong Group Ecology and Environment Bureau under Linkong Economic Zone AIB PMO of Ezhou Linkong Group	Ezhou Linkong Group AIB PMO of Ezhou Linkong Group
	Attitudes and suggestions from residents of surrounding villages, (with a focus on women, low-income groups, the elderly, and other vulnerable groups)	Discussions, questionnaire, and interview with key informants	Village committees in the project area December 2023 to July 2024	Villagers affected by the project	Ezhou Linkong Group PIU Village committees in the project area
	Matters related to land acquisition, land planning, approvals, and permits for various project activities	Discussions and interviews	Conference room of Natural Resources Bureau under Management Committee of Linkong Economic Zone December 2023 to July 2024	Natural Resources Bureau under Management Committee of Linkong Economic Zone, and project-involved townships	Ezhou Linkong Group PIU Natural Resources Bureau under Management Committee of Linkong Economic Zone Village committees in the project area
	Project land acquisition (including land compensation and resettlement plans, and payment of compensation fees)	Residents' meetings Seminars Key informant interviews	Project-affected townships and villages	Townships and towns affected by land acquisition Residents affected by land acquisition, etc.	Ezhou Linkong Group Management Committee of Linkong Economic Zone Head of township government

	Conduct noise impact assessments on sensitive points and implement proper noise control measures.	Residents' meetings Seminars Key informant interviews	Affected villages, enterprises, and schools December 2023 to July 2024	Management Committee of Linkong Economic Zone Ezhou Linkong Group Residents and employees affected by noise	Management Committee of Linkong Economic Zone Ezhou Linkong Group Village committees in the project area
Implementation	Potential impacts on residents of surrounding resettlement areas during project implementation (e.g., noise, traffic safety, and air dust pollution)	Focus group interviews Key informant interviews Questionnaire	Village committees, schools, etc. in the project area 2024-2028 (Quarterly)	Residents, school teachers & students around the Project	Ezhou Linkong Group Village leaders in the project area
	Conduct noise impact assessments on sensitive points and implement proper noise control measures.	Residents' meetings Seminars Key informant interviews	Affected villages, schools, etc. 2024-2028 (Quarterly)	Management Committee of Linkong Economic Zone, Ezhou Linkong Group, Residents and employees affected by noise	Management Committee of Linkong Economic Zone AIIB PMO of Ezhou Linkong Group Village committees in the project area
	Feedback from different stakeholders on problems arising during project implementation	Focus group interviews Key informant interviews Questionnaire	Relevant government offices Village committees in the project area 2024-2028 (Quarterly)	Ezhou Linkong Group Relevant government departments Village residents in the project area	Ezhou Linkong Group Village leaders in the project area
	Safety, worker working conditions, and occupational health policy, work processes, personal protective equipment, GBV prevention, etc. in the project resettlement area	Seminars Bulletin boards in resettlement area On-site training	Village committees in the project area Project Department of the Contractor 2024-2028 (Quarterly)	Residents in the project area Various Workers	Ezhou Linkong Group PIU Contractor Village leaders in the project area
	Complaints and grievances	Telephone Email SMS	Relevant government offices Village committees in the	Ezhou Linkong Group Relevant government departments	Ezhou Linkong Group PIU Contractor

		"12345" hotline and "12369" environmental protection hotline	project area (Immediate)	Construction worker Residents in the project area, etc.	Village leaders in the project area
Operation	Conduct regular noise monitoring, identify and disclose affected villages/resettlement areas within the 80-85 decibel noise contour of the airport, and implement noise control measures	Residents' meetings Seminars Bulletin board of village committee	Village committees in the project area 2028 and beyond (immediate)	Ezhou Linkong Group Relevant government departments Residents in noise-affected area	Ezhou Linkong Group AIIB PMO of Ezhou Linkong Group Management Committee of Linkong Economic Zone Village leaders in the project area
	Conduct a survey on the relocation willingness of individuals affected by noise to determine the population for noise relocation	Residents' meetings Seminars Bulletin boards for villages in the project area Public survey	Village committees in the project area 2028 and beyond (immediate)	Ezhou Linkong Group Relevant government departments Residents in noise-affected area	Ezhou Linkong Group AIIB PMO of Ezhou Linkong Group Management Committee of Linkong Economic Zone Heads of villages in townships and project areas
	Introduction to project basics	Focus group interviews Key informant interviews Consultation of Health Awareness Day Public satisfaction survey	Relevant government offices Village committees in the project area (Every half a year)	Ezhou Linkong Group Relevant government departments Residents in the project area Consulting and design institutes	Ezhou Linkong Group Project implementation and operation unit Village leaders in the project area
	Safety, worker working conditions, and occupational health policy, work processes, personal protective equipment, GBV prevention,	Seminars Seminars	Village committees in the project area Project Department at project work site (Every half a year)	Ezhou Linkong Group Relevant government departments Residents and floating population in the project	Ezhou Linkong Group Project implementation and operation unit Village leaders in the project area Future contractor for the operation

	etc. in the project resettlement area			area Workers for the operation works	works
	Environmental and social impacts of subsequent policies on the Project during their issuance and implementation	Focus group interviews Key informant interviews Consultation of Health Awareness Day Public satisfaction survey	Relevant government offices Village committees in the project area (Every half a year)	Residents in the project area Construction worker	Ezhou Linkong Group Project Implementation Unit (PIU) Village leaders in the project area
	Feedback from different stakeholders on problems arising during project operation	Focus group interviews Key informant interviews Consultation of Health Awareness Day Public satisfaction survey	Focus group interviews, key informant interviews, questionnaire, consultation of health awareness day, and public satisfaction survey	Relevant government offices Village committees in the project area Construction worker 2024-2028 (Quarterly)	Ezhou Linkong Group AIIB PMO of Ezhou Linkong Group Project Implementation Unit (PIU) Village leaders in the project area
	Complaints and grievances	Email Telephone SMS "12345" hotline and "12369" environmental protection hotline	Relevant government offices 2024-2028 (subject to change)	Ezhou Linkong Group Relevant government departments Residents in the project area Workers during project construction or operation	Ezhou Linkong Group Project Implementation Unit (PIU) Relevant government departments, etc. Contractor Village leaders in the project area

Table0-4Proposed Public Consultation Methods

Date	Location	Major Activity	Major Method	Participant	Responsible Agency	Discovery

4.4 Incorporate Opinions of Vulnerable Groups into Proposed Strategy

Due to their weaker resilience, vulnerable groups are more likely to suffer disproportionate losses. Additionally, they may sometimes be excluded from fully participating in the consultation process. Therefore, appropriate measures and assistance are needed to ensure their full participation in project activities. Table 4-5 outlines the participation strategy for incorporating the opinions of vulnerable groups.

Table 0-5 Proposed Strategy for Incorporating the Opinions of Vulnerable Groups

Project Stage	Key Topics	Method	Location/Date	Organizer
Preparation	Project Promotion and Outreach	Routine promotion by the elderly association Elderly/professional assistance Small targeted discussions Home interview	Relevant government offices Village committees in the project area December 2023 to July 2024	Ezhou Linkong Group Project Implementation Unit (PIU) Women's Federation, Social Affairs Bureau, Organization and Human Resources Bureau, and other relevant government units Site manager of the elderly association Village leaders in the project area
	Vulnerable groups' suggestions and expectations on the project	Routine promotion by the elderly association Elderly/professional assistance Small targeted discussions Home interview	Relevant government offices Village committees in the project area December 2023 to July 2024	Ezhou Linkong Group Project Implementation Unit (PIU) Women's Federation, Social Affairs Bureau, Organization and Human Resources Bureau, and other relevant government units Site manager of the elderly association Village leaders in the project area
	Possible impact on vulnerable groups during project implementation (such as noise issues, opinions of vulnerable groups on the project and its infrastructure development,	Routine promotion by the elderly association Elderly/professional assistance Small targeted discussions Home interview	Relevant government offices Village committees in the project area December 2023 to July 2024	Ezhou Linkong Group Project Implementation Unit (PIU) Women's Federation, Social Affairs Bureau, Organization and Human Resources Bureau, and other relevant government units

	female employees' views on occupational health and safety at work, and the impact of project construction on the benefits of impoverished populations and ethnic minorities)			Site manager of the elderly association Village leaders in the project area
Implementation	Possible impact on vulnerable groups during project implementation	Routine promotion by the elderly association Elderly/professional assistance Small targeted discussions Home interview	Relevant government offices Village committees in the project area (Once a quarter)	Ezhou Linkong Group Project Implementation Unit (PIU) Women's Federation, Social Affairs Bureau, Organization and Human Resources Bureau, and other relevant government units Site manager of the elderly association Village leaders in the project area
	Complaints and grievances	Telephone Email "12345" hotline and "12369" environmental protection hotline	Relevant government offices Village committees in the project area (Once a quarter)	Ezhou Linkong Group Project Implementation Unit (PIU) Women's Federation, Social Affairs Bureau, Organization and Human Resources Bureau, and other relevant government units Site manager of the elderly association Village leaders in the project area
	Implementation status of work related to vulnerable groups	Seminars	Relevant government offices Village committees in the project area (Once a quarter)	Ezhou Linkong Group Project Implementation Unit (PIU) Women's Federation, Social Affairs Bureau, Organization and Human Resources Bureau, and other relevant government units Site manager of the elderly association Village leaders in the project area
Operation	Environmental and social impacts of subsequent policies on vulnerable groups during their	Routine promotion by the elderly association Elderly/professional assistance	Relevant government offices Village committees in	PMO of Ezhou Linkong Group Implementation unit Women's Federation, Social Affairs

	issuance and implementation	Small targeted discussions Home interview	the project area (Every half a year)	Bureau, Organization and Human Resources Bureau, and other relevant government units Site manager of the elderly association Village leaders in the project area
	Complaints and grievances	Telephone Email SMS "12345" hotline and "12369" environmental protection hotline	Relevant government offices Village committees in the project area (Every half a year)	Ezhou Linkong Group Project Implementation Unit (PIU) Women's Federation, Social Affairs Bureau, Organization and Human Resources Bureau, and other relevant government units Site manager of the elderly association Village leaders in the project area
	Training measures for vulnerable groups	Targeted small-scale training sessions, with professional trainers arranged according to the needs of vulnerable groups	Relevant government offices Village committees in the project area (Every half a year)	Ezhou Linkong Group Project Implementation Unit (PIU) Women's Federation, Social Affairs Bureau, Organization and Human Resources Bureau, and other relevant government units Site manager of the elderly association Village leaders in the project area
	Implementation status of work related to vulnerable groups	Seminars	Relevant government offices Village committees in the project area (Every half a year)	Ezhou Linkong Group Project Implementation Unit (PIU) Women's Federation, Social Affairs Bureau, Organization and Human Resources Bureau, and other relevant government units Site manager of the elderly association Village leaders in the project area

4.5 Schedule

Different project phases require distinct decisions, and making timely decisions within the specified time frame is crucial. At the current stage, the Hubei Global Air Cargo Logistics Hub Project has not yet developed detailed implementation plans and schedules. Accordingly, the specific implementation schedule for stakeholders of the Hubei Global Air Cargo Logistics Hub Project cannot yet be determined. Table 4-6 outlines the principal requirements for the key timelines of information disclosure and feedback for the Hubei Global Air Cargo Logistics Hub Project.

Table 0-6 Schedule for Important Decisions of Stakeholders

Project Stage	Important Decisions and Information	Time	Deadline for Feedback or Decision
Preparation	Project information (mainly including project nature, scale, duration, etc.), Stakeholder Engagement Plan (SEP), etc.	December 2023 to July 2024	July 30, 2024
Implementation	Project progress information, implementation of environmental and social measures, complaints and grievance handling, project performance, and environmental & social performance reports	From July 2024 to 2028; to be formulated according to the actual situation of sub-projects	June 30 each year; December 31 each year
Operation	Project operational status, complaints and grievance handling, project performance, and environmental & social performance reports	From May 31 to November 30 every year; formulated according to the actual situation of sub-projects	June 30 each year; December 31 each year

4.6 Opinion Review

Throughout the entire project lifecycle, as project information becomes clear, the Ezhou Linkong Group PMO and the PIU will communicate and confirm key environmental and social matters with relevant government approval bodies based on the nature and characteristics of the sub-projects, and initiate corresponding consultation and engagement activities at the earliest possible stage.

The Ezhou Linkong Group PMO will document all relevant opinions and suggestions from stakeholders, whether obtained through questionnaires or interviews. The

adoption of opinions will be described in the project's semi-annual environmental and social monitoring reports and will be communicated to the public and disclosed.

The Ezhou Linkong Group PMO and PIU will fully consider the suggestions made by stakeholders during the **project preparation phase**, ensuring that the project design aligns with the needs and interests of the stakeholders.

For the concerns raised by stakeholders during the **project implementation and operational phases**, the Ezhou Linkong Group PMO will conduct investigations and verifications, and engage in thorough communication with stakeholders during subsequent implementation and operations. Through multi-party consultations, the most effective solutions will be chosen to address the issues.

4.7 Project Future

As the Project progresses, the PIU and contractors will implement the SEP for the Hubei Global Air Cargo Logistics Hub Project. This includes information disclosure and feedback, stakeholder consultations, and the grievance redress mechanism.

Ezhou Linkong Group and the PIU will engage in communication and interaction with stakeholders according to the activities outlined in this plan (Sections 4.1, 4.3, 4.4, and 4.5). They will disclose project information to stakeholders, including project details, construction information, environmental and social management documents (such as ESIA, ESMP, SEP, RAP, etc.), and the grievance redress mechanism.

Ezhou Linkong Group will prepare semi-annual environmental and social performance reports and disclose them to the public through various channels. If there are any changes to the Project, Ezhou Linkong Group and the PIU will promptly inform stakeholders through the aforementioned information disclosure and public consultation methods.

5 Resources and Responsibilities for Conducting Stakeholder Consultation Activities

5.1 Resources

The Ezhou Municipal Government is responsible for coordinating the Management Committee of Linkong Economic Zone and Ezhou Linkong Group to ensure smooth inter-agency communication and coordination. Ezhou Linkong Group, as the PIU, is responsible for the preparation, implementation, and subsequent management of the Project. It bears overall responsibility for the environmental and social management of the Project. During the implementation of the Project, the PIU will adhere to AIIB's environmental and social policies, undergo AIIB's supervision and inspection, and submit relevant monitoring data, reports, and other documents as required by AIIB.

The AIIB PMO of Ezhou Linkong Group will be responsible for the specific implementation of resettlement, noise monitoring, and noise reduction measures for the Project. During the implementation of the Project, it will comply with AIIB's environmental and social policies, provide relevant environmental and social information, and cooperate with AIIB and related environmental and social monitoring agencies in the supervision and inspection of environmental and social implementation work.

Relevant departments of the Management Committee of Linkong Economic Zone, the AIIB PMO of Ezhou Linkong Group, related townships/villages in the project area, project design institutions, and external independent monitoring and evaluation agencies will also participate in the implementation of the Project and assist other organizations in carrying out their work.

Relevant functional departments of the Management Committee of Linkong Economic Zone and the PMO of Ezhou Linkong Group will be responsible for coordinating the formulation and implementation of the SEP for the entire Project. They will require the PIU to conduct fair, open, and transparent public participation and consultations throughout the Project to ensure that the interests of all stakeholders are protected and to facilitate the smooth implementation of the Project. Ezhou Linkong Group will allocate dedicated personnel and budget for information disclosure and stakeholder engagement. Additionally, environmental and social experts will be hired to provide technical support and guidance for stakeholder consultation activities.

5.2 Management Functions and Duties

According to the SEP for the Project, Ezhou Linkong Group and the PIU will define functions and duties to ensure effective stakeholder engagement and timely responses to stakeholder concerns and grievances.

Ezhou Linkong Group will appoint an Environmental Officer and a Social Officer to be responsible for the environmental and social aspects of the Project, including the implementation of the SEP, grievance feedback and handling, and performance monitoring.

Ezhou Linkong Group will hire an independent third-party monitoring agency to conduct monitoring and evaluation of the implementation and performance of the project's environmental and social documents, and to provide recommendations and measures for improvement.

To ensure the smooth implementation and effective operation of the Project, Ezhou Linkong Group has requested the Ezhou Municipal Government to establish the Ezhou PMO for Utilizing AIIB Loans. This leading group serves as the highest decision-making, leadership, and coordination body for the Project. The leading group is chaired by the Mayor of Ezhou, with the Executive Vice Mayor serving as the Executive Deputy Chair, and the Deputy Mayor in charge serving as the Deputy Chair. The group includes members from the Municipal Government, Municipal Development and Reform Commission, Municipal Housing and Urban-Rural Development Bureau, Municipal Department of Finance, Municipal Natural Resources and Planning Bureau, Municipal Science and Technology Bureau, Municipal Ecology and Environment Bureau, and Municipal Transportation Bureau. This group provides high-level guidance and supervision for the implementation of the Project, particularly in policy and strategic directives, inter-departmental communication and coordination, and consultation and resolution of key issues.

The specific division of duties is shown in Table 5-1.

Table 0-1 Functions and Duties of Stakeholder Engagement

S/N	Institution	Duty
1	Ezhou Municipal Government	➤ responsible for coordinating Ezhou Linkong Group Co., Ltd. and the Management Committee of Linkong Economic Zone to ensure smooth inter-agency communication and coordination
2	AIIB Project Manager of Ezhou Linkong Group	<ul style="list-style-type: none"> ➤ Review and confirm the SEP ➤ Oversee stakeholder engagement activities ➤ Report the results and opinions of stakeholder engagement to relevant leaders
3	Environmental and social officials for AIIB PMO of	<ul style="list-style-type: none"> ➤ Develop the SEP in collaboration with the PIU ➤ Participate in the SEP and be responsible for communicating and coordinating with the PIU ➤ Responsible for stakeholder grievances and complaints

	Ezhou Linkong Group	<ul style="list-style-type: none"> ➤ Monitor and manage stakeholder engagement performance
4	Implementation unit	<ul style="list-style-type: none"> ➤ Develop and implement the SEP ➤ Responsible for the responsibility and commitment of stakeholder engagement <ul style="list-style-type: none"> ➤ Identify key concerns of stakeholders ➤ Track stakeholder engagement progress and feedback ➤ Establish and maintain an effective grievance redress mechanism ➤ Report the stakeholder engagement results to Ezhou Linkong Group
5	Environmental and social director of the implementation unit	<ul style="list-style-type: none"> ➤ Be responsible for communicating and coordinating with relevant resettlement areas ➤ Responsible for managing and implementing stakeholder engagement in environmental and social aspects <ul style="list-style-type: none"> ➤ Record stakeholder engagement activities ➤ Update stakeholder engagement records ➤ Record stakeholder grievances and handling results
6	External monitoring	<ul style="list-style-type: none"> ➤ Regularly track, monitor, and evaluate the implementation activities of the SEP. ➤ Provide consultation opinions and submit monitoring reports to Ezhou Linkong Group and the AIIB

6 Grievance Redress Mechanism (GRM)

During the preparation, construction, and future operation phases of the Project, a project-level GRM will be established. This mechanism aims to promptly address and resolve impacts and issues brought to stakeholders by the Project, ensure the affected parties' need for information disclosure, and promote the broadest possible participation in resettlement areas. This will also take into account the current status of complaints and grievances from the local communities in the Project area.

The GRM of the Project mainly includes two types:

The first type is the project-level GRM, which provides a complaint channel for affected residents, social groups, enterprises, institutions, and business entities during the implementation and operation of the Project.

The second type is the GRM for project workers, including direct workers, contract workers, and other employees involved in the Project. This mechanism provides a complaint channel specifically for these workers.

6.1 Arrangements for Grievance Redress Mechanism

(1) GRM for project-affected parties

The establishment of the GRM primarily aims to promptly reflect and resolve adverse impacts arising from the implementation of the Project (e.g., noise from aircraft takeoffs and landings, noise from construction site, dust generated by construction activities, and improper disposal of construction waste), thereby safeguarding the basic social rights of stakeholders. The GRM for the Project complies with the regulatory standards of the People's Republic of China, which protect citizens' rights from environmental and social impacts related to construction activities. The "Regulation on Complaint Letters and Visits No. 431," issued by the State Council of the People's Republic of China in 2005, outlines the complaint handling procedures at various levels of government and protects complainants from retaliation. In accordance with these regulations, the former Ministry of Environmental Protection issued the latest "Measures for Environmental Letters and Visits" (Decree No. 15) in December 2010.

Upon receiving a grievance, the head of the AIIB PMO of Ezhou Linkong Group shall first verify whether the grievance is related to the Project. If the grievance is related to the Project, regardless of whether it pertains to environmental or social issues, the head shall initiate coordination to address and resolve the grievance. If the grievance is not related to the Project, the head shall submit the grievance to the relevant competent

authorities on behalf of the complainant. All grievances shall be documented, and the entire process of handling the grievance shall be communicated to the relevant personnel. The basic steps and time frame of the GRM are as follows.

- Stage 1 (5 days): If the complainant is dissatisfied with the land acquisition, resettlement compensation, or resettlement plan, or has concerns regarding safety and environmental issues during the construction and operation period, they can lodge a grievance orally or in writing with the local village committee or contractor. If the grievance is made orally, the village committee or contractor shall document it in writing. The village committee or contractor will: (1) Immediately require the subject of the complaint to cease related activities upon confirmation of the issue (e.g., noise of construction site affecting nearby residents); (2) Ensure that the subject of the complaint does not resume related activities until the complaint is resolved; (3) Immediately inform the AIIB PMO of Ezhou Linkong Group of the received complaint and the proposed resolution; (4) Provide a clear response to the affected person within two days; (5) Resolve the issue as soon as possible, ideally within five days of receiving the complaint.

- Stage 2 (15 days): If the complainant is not satisfied with the resolution provided by the village committee or contractor, they can lodge a grievance orally, by phone, or in writing with the local township government or the AIIB PMO of Ezhou Linkong Group after receiving the resolution. The AIIB PMO of Ezhou Linkong Group or the township government will: (1) Retrieve the original grievance records and organize a meeting with key stakeholders (including the subject of the complaint and the complainant) within five days. Develop a solution that is acceptable to all parties, outlining the key steps to resolve the issue. (2) The subject of the complaint shall immediately implement the resolution and resolve the issue within 15 days. All measures and outcomes shall be documented.

- Stage 3 (15 days): If the complainant is not satisfied with the resolution provided by the subdistrict office or the AIIB PMO of Ezhou Linkong Group, they can lodge a grievance orally, by phone, or in writing with the Management Committee of Linkong Economic Zone or Ezhou Linkong Group after receiving the resolution, or directly file a lawsuit with the People's Court. The Management Committee of Linkong Economic Zone or Ezhou Linkong Group will organize a stakeholder consultation meeting within two weeks (including the complainant, the subject of the complaint, and relevant functional departments such as the local Natural Resources and Planning Bureau, Resettlement Office, Human Resources and Social Security Bureau, Women's Federation, and Agriculture and Rural Affairs Bureau). The meeting shall establish a resolution acceptable to all parties, including clear steps for implementation. The subject of the complaint shall immediately implement the agreed-upon resolution and completely resolve the issue within 15 days. The actions and results of all these stages will be documented. At the end of Stage 3, Ezhou Linkong Group will inform the AIIB of the results.

- Stage 4: If the complainant is still not satisfied with the above decisions, they may file a lawsuit with the Civil Court in accordance with the "Civil Procedure Law of the People's Republic of China" after receiving the decision.

(2) GRM for workers

Ezhou Linkong Group will establish a separate grievance handling center to address complaints raised by workers at construction sites against contractors. These complaints include issues related to wages, overtime pay, timely payment of wages, accommodation problems, or facilities related to drinking water, sanitation, and medical services.

In GBV management, relying on the guidance and coordination of the AIIB PMO, the Women's Federation of the Linkong Economic Zone, and the Women's Federation of the resettlement subdistrict, the PIU and project contractors shall, during the implementation or operation of the Project, sign labor (employment) contracts with female employees in accordance with laws and regulations such as the "Law of the People's Republic of China on the Protection of Women's Rights and Interests," the "Special Provisions on Labor Protection for Female Employees," the "Regulations on Health Care for Female Employees," the "Special Labor Protection System for Female Employees in Workplaces (Reference Text)," and the "System for Eliminating Sexual Harassment in Workplaces (Reference Text)." They shall ensure equal pay for equal work for men and women and, based on the work and production characteristics of their units, take effective measures such as appointing dedicated personnel responsible for protecting women's rights to prevent and stop sexual harassment of female employees in the workplace.

At the same time, establish a rapid response mechanism for grievances or suggestions related to GBV from female workers and women in the project area. If there are incidents of sexual harassment or other behaviors that endanger the personal safety of female employees in the workplace, the victim can immediately report or file a complaint with the employer, grassroots Women's Federation organization, Female Employee Committee, or by calling the "12338" Women's Rights Protection Public Service Hotline. The employer shall promptly address the issue and legally protect the rights and interests of female employees from infringement.

Additionally, the AIIB has established a Project-affected People's Mechanism (PPM). When project-affected people believe that the AIIB's failure to implement its Environmental and Social Policy (ESP) has caused or may cause adverse impacts on them, and their concerns cannot be satisfactorily resolved through the project GRM or AIIB's management mechanisms, the PPM provides an independent and impartial review opportunity. Information related to the PPM can be accessed through the following link:
<https://www.aiib.org/en/about-aiib/who-we-are/project-affected-peoples-mechanism/how-we-assist-you/index.html>.

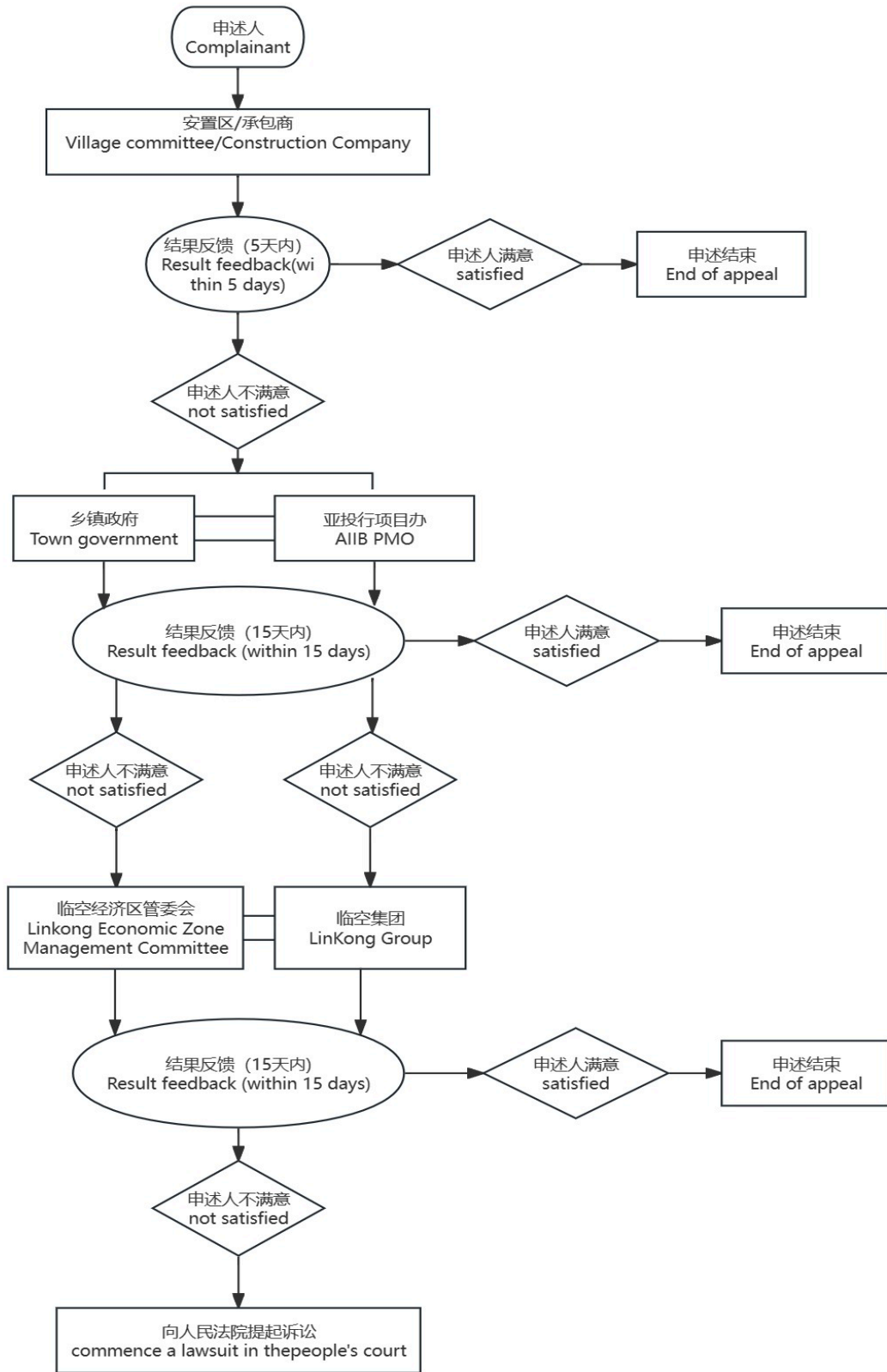


Figure 0-1 Flow Chart of GRM

6.2 Record, Follow-up, and Feedback of Complaints and Grievances

During the implementation of the ESMP, all entry points of the GRM shall properly document and manage grievance records and resolution outcomes. These records will be submitted in written form to the Ezhou Linkong Group PMO on a monthly basis. The Ezhou Linkong Group PMO will conduct regular inspections of the grievance handling records and is responsible for timely communication and coordination with the Management Committee of Linkong Economic Zone. Both parties shall reach a consensus on recommendations and progress.

To fully document the grievances of the affected population and the handling of related issues, the AIIB PMO of Ezhou Linkong Group has developed a Grievance and Complaint Registration Form for the affected population. See Table 6-1 for the sample table format.

Table 0-1 Grievance and Complaint Registration Form

Name of Complainant	Time	Location	Feedback from the Complaint -Receiving Unit	Ezhou Linkong Group	Management Committee of Linkong Economic Zone	Suggestions of External Monitoring Unit	Progress on Grievance Resolution
Reason for Grievance							
Requested Resolution							
Proposed Resolution							
Actual Handling Status							
Responsible person (signature)							
Note: 1) The recorder shall accurately document the complainant's grievance and requests. 2) The grievance process can be handled anonymously, free from any interference and obstacles. 3) The proposed resolution shall be communicated to the complainant within the specified time frame.							

6.3 Contacts to Express Complaints and Grievances

The PIU will designate a key official to specifically handle and address grievances and complaints from the affected population. The names, office addresses, and contact numbers of the designated officials are provided in Table 6-2. Upon completion of the

bidding process, the contractor and supervision unit must designate an Environmental and Social Officer to serve as the GRM contact person.

Table 0-2 Information on Organizations and Personnel Handling Grievances and Complaints from Affected Population

Organization/Unit	Contact	Address	Telephone
PMO of Ezhou Linkong Group	Zhou Qing	Investment Promotion and Exhibition Center of Ezhou Linkong Economic Zone	18971999902
Land Acquisition Office of Linkong Economic Zone	Zhou Xiaolin	Investment Promotion and Exhibition Center of Ezhou Linkong Economic Zone	18972958040
Natural Resources and Planning Bureau of Linkong Economic Zone	Lyu Xinming	Investment Promotion and Exhibition Center of Ezhou Linkong Economic Zone	18908685177
Social Affairs Bureau of Linkong Economic Zone	Liu Du	Investment Promotion and Exhibition Center of Ezhou Linkong Economic Zone	13972957838
Organization and Human Resources Bureau of Linkong Economic Zone	Wang Jun	Investment Promotion and Exhibition Center of Ezhou Linkong Economic Zone	18771881690
Economic Development Bureau of Linkong Economic Zone	Li Chaoming	Investment Promotion and Exhibition Center of Ezhou Linkong Economic Zone	18808685918
Financial Bureau of Linkong Economic Zone	Zhu Degao	Investment Promotion and Exhibition Center of Ezhou Linkong Economic Zone	13971995419
Women's Federation of Linkong Economic Zone	Xiao Mengyao	Investment Promotion and Exhibition Center of Ezhou Linkong Economic Zone	15090987052
Yanji Town	Lyu Siqi	Party-Mass Service Center of Yanji Resettlement Area	15926001011
Cehu Village	Shao Xuyong	Village cadres	13995829670
Bajiao Village	Zhang Yucai	Village cadres	13908682570
Duwan Village	Zhou Hua	Village cadres	13657115050
Yangye Town	Wang Binghua	Party-Mass Service Center of Yangye Resettlement Area	18908683811
Gutang Village	Pan Longzhen	Village cadres	18972965772
Shawo Township	Zhou Bo	Village cadres	18571100606

Zouma Village	Li Haibing	Village cadres	13995814016
---------------	------------	----------------	-------------

7 Monitoring and Report

7.1 Stakeholder Engagement in Monitoring Activities

The PIU will maintain records of all stakeholder engagement, information disclosure, grievances, and resolutions. These records will be reported to Ezhou Linkong Group through routine monitoring and reporting mechanisms. The AIIB PMO of Ezhou Linkong Group will include the implementation of the SEP in the semi-annual environmental and social performance monitoring and reporting.

The indicative monitoring indicators of stakeholder engagement and the associated responsible institutions are detailed in Table 7-1.

Table 0-1 Indicative Monitoring Indicators for Stakeholder Engagement

S/N	Indicator	Unit	Frequency	Responsible Agency
1	Number of public participation during project/sub-project preparation	Times	Quarter	AIIB PMO and PIU of Ezhou Linkong Group
2	Number of public participation during project/sub-project construction and/or operation	Times	Quarter	AIIB PMO and PIU of Ezhou Linkong Group
3	Number of participants in public participation activities	Number of people	Quarter	AIIB PMO and PIU of Ezhou Linkong Group
3.1	Including: women	Number of people	Quarter	AIIB PMO and PIU of Ezhou Linkong Group
3.2	Vulnerable groups	Number of people	Quarter	AIIB PMO and PIU of Ezhou Linkong Group
4	Number of feedbacks received	Pcs.	Quarter	AIIB PMO and PIU of Ezhou Linkong Group
5	Number of complaints received	Pcs.	Quarter	AIIB PMO and PIU of Ezhou Linkong Group
6	Number of complaints handled	Pcs.	Quarter	AIIB PMO and PIU of Ezhou Linkong Group

7.2 Feedback to Stakeholder Groups

The outcomes of stakeholder consultations for the Project will be communicated to the affected stakeholders and the broader stakeholder community in accordance with the information disclosure strategies proposed in Chapter 4.

Throughout the entire project cycle, the AIIB PMO and PIU of Ezhou Linkong Group will ensure the effective operation of the grievance redress and communication mechanisms to promptly engage with stakeholders and address their concerns.

Annex 1: Stakeholder Engagement Survey in Preparation Period

During the project preparation period, with the collaboration of the Ezhou Linkong Group PMO and the HydroChina Zhongnan Engineering Corporation Limited, the Environmental and Social Impact Assessment (ESIA) team conducted a series of social impact surveys and extensive public participation and consultations. From December 4 to 7, 2023, public surveys were carried out at the project construction site and within the affected resettlement communities.

(1) Agency interviews. The ESIA team conducted institutional meetings or interviews with seven relevant agencies and departments, including the Planning Command Center of Ezhou Linkong Group, and the Operation Department of Huahu Airport, as well as the Organization and Human Resources Bureau, Social Affairs Bureau, Rural Revitalization Bureau, Urban Construction Bureau (Housing Acquisition and Demolition Compensation Office), and the Natural Resources and Planning Sub-bureau of the Management Committee of Linkong Economic Zone. They also collected data and information closely related to the Project. The details of the interviews are given in the table below.

Table 1 List of Interviews with Agencies in Project Areas and Counties

	Interviews	Details of interviewed department
Project Area	7	Planning Command Center of Ezhou Linkong Group, the Operation Department of Huahu Airport, as well as the Organization and Human Resources Bureau, Social Affairs Bureau, Rural Revitalization Bureau, Urban Construction Bureau (Housing Acquisition and Demolition Compensation Office), and the Natural Resources and Planning Sub-bureau of the Management Committee of Linkong Economic Zone
Total	7	-----

(2) **Field survey.** The ESIA team conducted field inspections of the towns, streets, communities/villages affected by the Project, as well as the surrounding areas, road conditions, infrastructure status, and the construction status of early-stage project sites. This allowed for a more practical and objective understanding of the Project's impact on the production and living conditions of nearby residents, land acquisition situations, the socio-economic conditions of urban and rural residents in the project benefit area and affected communities, as well as their suggestions, major concerns, and demands regarding the Project and its supporting facilities. The field survey results for each project area are shown in the following image, with detailed information provided in Figure 1 below.

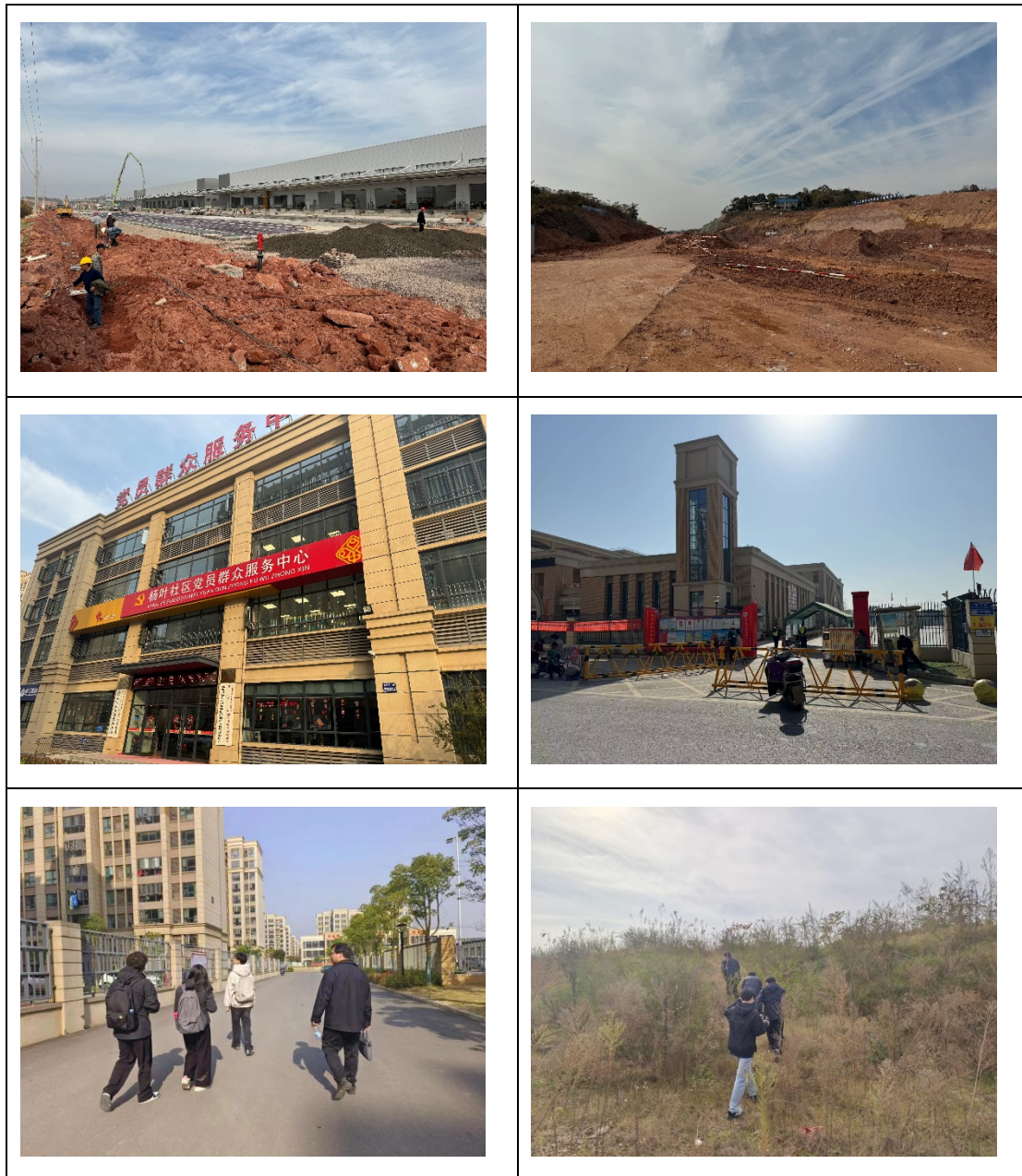


Figure 1 Field Survey by ESIA Team

Table 2 List of Field Survey Sites in Project Areas

Municipal	District	Town/Township
Ezhou City	Linkong Economic Zone	Yanji Town (Chehu Village, Bajiao Village, and Duwan Village)
		Yangye Town (Gutang Village)
		Shawo Township (Zouma Village)

(3) Focus group discussions. To gain a comprehensive understanding of the needs and suggestions of the affected population in the project area (including urban and rural residents, women, low-income groups, and vulnerable groups), an assessment was conducted regarding the beneficiaries' assessment of the current social environment near their residences, their expectations for the Project, and their concerns and recommendations regarding its implementation. During the field survey, the ESIA team

conducted focus group discussions. A total of 14 focus group meetings were held across various towns and communities in the project counties and districts, with 157 residents participating. Among them, 68 were women, accounting for 43.31%, and 42 were elderly, accounting for 26.75%.



Figure 2 Focus Group Discussions

(4) Key informant interviews. The ESIA team conducted interviews with key informants at the county/district, town/street, and village/community levels to gain a deeper understanding of stakeholders' attitudes toward the Project and to provide better recommendations for its design and implementation. A total of 38 key informants from the project area were interviewed.



Figure 3 Key Informant Interviews

(5) Questionnaire. During the field survey, the ESIA team employed the Probability Proportional to Size (PPS) sampling method, with a 95% confidence level and a maximum absolute error margin of 5%. A total of 250 one-on-one and group questionnaires were completed in the project area. After statistical testing and screening, 220 valid questionnaires were identified, resulting in an effective rate of 88%, meeting the statistical requirements.



Figure 4 Questionnaire

Annex 2: Identification of Stakeholders for Hubei Global Air Cargo Logistics Hub Project (Construction Sub-item)

Sub-project	Category	Stakeholders	Impact of/on the Project
<p>1. Customs infrastructure The main components include the construction of the 2# International Cargo Terminal (19,474.00 m²), the 3# International Cargo Terminal (19,474.00 m²), the 4# International Express Center (45,398.00 m²), customs perimeter fencing (7,730.00 linear meters), the 2# Customs Kiosk accommodating 8 lanes, and the 4# Customs Kiosk accommodating 4 lanes.</p> <p>2. Bonded warehousing and processing The main components include the construction of the 8# Bonded Processing Center (building area 39,225.00 m²), the 9# Bonded Processing Center (building area 20,936.00 m²), the 11# Bonded Logistics Center (building area 19,884.00 m²), the 12# Bonded Logistics Center (building area 19,884.00 m²), the 13# Bonded Logistics Center (building area 12,591.00 m²), the 14# Bonded Logistics Center (building area 12,591.00 m²), the 10# Dangerous Goods Warehouse (building area 4,500.00 m²), the 15#</p>	Parties affected by the Project	Residents in the project area affected by land acquisition and demolition	The Project involves two townships: Yanji Town and Yangye Town. The Project requires the acquisition of 814.2 mu of collective land, affecting 275 households and 1,074 people in Duwan Village and Chehu Village of Yanji Town, within the Ezhou Linkong Economic Zone.
		Residents around the project construction site	They will need to bear the potential noise, dust, and traffic safety risks that may arise during the project construction period.
		On-site workers for project construction	They will need to bear the potential occupational health and safety risks that may arise during the project construction period.
		On-site workers of the associated facility - Wuchu Avenue	They will need to bear the potential occupational health and safety risks that may arise during the project construction period.
		Staff of Huahu Airport	The increase in passenger and cargo throughput at the airport will correspondingly increase employment opportunities with airlines, enhance economies of scale, and boost the occupational pride of airport staff.
	Other interested parties	PMO of Ezhou Linkong Group	Responsible for formulating the overall project implementation plan, supervising and guiding the implementation units of each sub-project to complete the plan and related tasks, and promoting project implementation.
		Natural Resources and Planning Bureau of Linkong Economic Zone	Responsible for land acquisition and house demolition (if any) related to the Project, and assist in handling relevant approval procedures.

<p>Bonded Logistics Center (building area 9,908.00 m²), the 16# Bonded Logistics Center (building area 11,387.00 m²), the 17# Bonded Logistics Center (building area 11,387.00 m²), and the 18# Bonded Logistics Center (building area 11,387.00 m²).</p> <p>3. Trade and Cargo Service Facilities</p> <p>The main components include the construction of the 19# Comprehensive Support Center (building area 87,525.00 m²) and the 20# Commercial Logistics Building (building area 55,000.00 m²).</p> <p>4. Digital Facilities</p> <p>The main components include customs supervision equipment and IT applications of the comprehensive bonded zone (port operation area, bonded function area, kiosks + video surveillance + alarms, software systems, IT infrastructure), civil aviation cargo inspection equipment & facilities (intelligent employee passage security management system, layered cargo security inspection management system, security inspection cloud platform, cargo security inspection management platform, scanning and transmission sorting system), weak current intelligent systems and unmanned</p>	Social Affairs Bureau of Linkong Economic Zone	Responsible for implementing social assistance/subsidy standards and supporting policies, such as subsistence allowances and five guarantees.
	Organization and Human Resources Bureau of Linkong Economic Zone	Responsible for implementing policies related to skill training and employment promotion for relocated residents.
	Economic Development Bureau of Linkong Economic Zone	Responsible for overseeing the initial stages of the project and approving and submitting investment projects according to regulatory authority.
	Financial Bureau of Linkong Economic Zone	Responsible for managing the financial plan of the Project and AIIB investment loan activities.
	Women's Federation of Linkong Economic Zone	Protect the legitimate rights and interests of women and children in the jurisdiction.
	Contractor	Carry out construction according to the project design and be responsible for the environmental and social impacts at the construction site.
	Hubei International Logistics Airport Co., Ltd.	The completion of the Project will enhance the cargo warehousing level and capacity of Huahu Airport, significantly increasing the airport's cargo throughput.
	Design consulting unit (e.g., feasibility study/environmental impact assessment)	Learn the needs of stakeholders and optimize the design.

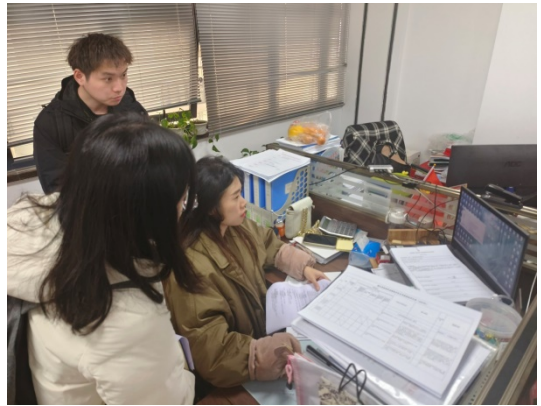

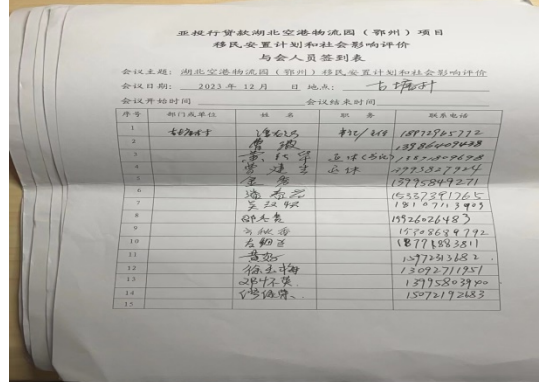
<p>driving for the park.</p> <p>5. Supporting Facilities</p> <p>The main components include the construction of the 1# Viaduct (11,000.00 m²), the 2# Reserved Viaduct (11,000.00 m²), the 3# Viaduct (5,000.00 m²), the 4# Viaduct (4,000.00 m²), the 21# Gateway (1,500.00 m²), as well as roads, aprons, landscaping, etc. (424,049.81 m²).</p>		units)	
		Media	Responsible for publicizing the Project and informing the general public about various aspects of the Project.
	Vulnerable groups	Elderly	Reduce the impacts of noise, dust, and other disturbances during the project construction; provide dedicated information disclosure methods
		Women	Ensure that female residents are less affected by noise, dust, and construction emissions during the project construction and operation; ensure equal pay for female workers and male workers, and guarantee the occupational health and safety of female employees
	Low-income population	The project construction impacts existing livelihoods, requiring the provision of more job opportunities during project implementation	

Annex 3: Interview Record

Time	December 7, 2023
Location	Party-Mass Service Center of Yanji Community
Organized by	AIIB PMO of Ezhou Linkong Group
Participants	ESIA Team, Officials of Yanji Resettlement Community, and Representatives of the Relocated Population
Topic	Socio-economic conditions of the affected project area, attitudes toward the Project, land acquisition compensation plans, residents' needs, information disclosure, and grievance redress.
Main contents and results	<p>1. The supporting facilities within the Yanji Town Resettlement Community are complete and can meet the daily needs of the residents. The residents are generally satisfied with the current construction status of the resettlement community, considering that their living standards have significantly improved compared to their previous rural living conditions before relocation.</p> <p>2. Residents have learned about the Project mainly through traditional media (news), new media (TikTok, WeChat public accounts), villager representative meetings, and household surveys. They believe that the construction of the Project will drive the development of the surrounding economy, providing more opportunities for increased income, and that the benefits to their lives outweigh the disadvantages.</p> <p>3. The residents' needs can be summarized in the following two aspects:</p> <p>1) Minimize the noise, dust and other social impacts caused by project construction;</p> <p>2) Employment opportunities generated by the Project should be prioritized for residents of the nearby resettlement areas.</p>



Annex 4: Records of Stakeholder Engagement

																																																																																	
<p>Discussion with Ezhou Linkong Group</p>	<p>Interview organized by the Organization and Human Resources Bureau of the Linkong Economic Zone</p>																																																																																
																																																																																	
<p>Discussion with Social Affairs Bureau of Linkong Economic Zone</p>	<p>Construction site of early-stage project</p>																																																																																
 <table border="1" data-bbox="347 1534 742 1736"> <thead> <tr> <th>序号</th> <th>部门或单位</th> <th>姓名</th> <th>职务</th> <th>联系电话</th> </tr> </thead> <tbody> <tr> <td>1</td> <td>组织部</td> <td>潘文超</td> <td>主任</td> <td>18772865772</td> </tr> <tr> <td>2</td> <td></td> <td>曹 敏</td> <td></td> <td>18786009488</td> </tr> <tr> <td>3</td> <td></td> <td>曹 代 华</td> <td>主任(506)</td> <td>11822000008</td> </tr> <tr> <td>4</td> <td></td> <td>曹 建 宇</td> <td>主任</td> <td>15773327754</td> </tr> <tr> <td>5</td> <td></td> <td>潘 程 亮</td> <td></td> <td>15775849271</td> </tr> <tr> <td>6</td> <td></td> <td>李 政 帆</td> <td></td> <td>15357591765</td> </tr> <tr> <td>7</td> <td></td> <td>左 勤 平</td> <td></td> <td>18940711340</td> </tr> <tr> <td>8</td> <td></td> <td>邵 大 泉</td> <td></td> <td>1572626480</td> </tr> <tr> <td>9</td> <td></td> <td>李 德 华</td> <td></td> <td>15708689772</td> </tr> <tr> <td>10</td> <td></td> <td>左 勤 平</td> <td></td> <td>18771883811</td> </tr> <tr> <td>11</td> <td></td> <td>曹 建 宇</td> <td></td> <td>15773327754</td> </tr> <tr> <td>12</td> <td></td> <td>徐 志 博</td> <td></td> <td>13092719251</td> </tr> <tr> <td>13</td> <td></td> <td>曹 建 宇</td> <td></td> <td>15773327754</td> </tr> <tr> <td>14</td> <td></td> <td>李 德 华</td> <td></td> <td>15708689772</td> </tr> <tr> <td>15</td> <td></td> <td>曹 建 宇</td> <td></td> <td>15773327754</td> </tr> </tbody> </table>	序号	部门或单位	姓名	职务	联系电话	1	组织部	潘文超	主任	18772865772	2		曹 敏		18786009488	3		曹 代 华	主任(506)	11822000008	4		曹 建 宇	主任	15773327754	5		潘 程 亮		15775849271	6		李 政 帆		15357591765	7		左 勤 平		18940711340	8		邵 大 泉		1572626480	9		李 德 华		15708689772	10		左 勤 平		18771883811	11		曹 建 宇		15773327754	12		徐 志 博		13092719251	13		曹 建 宇		15773327754	14		李 德 华		15708689772	15		曹 建 宇		15773327754	
序号	部门或单位	姓名	职务	联系电话																																																																													
1	组织部	潘文超	主任	18772865772																																																																													
2		曹 敏		18786009488																																																																													
3		曹 代 华	主任(506)	11822000008																																																																													
4		曹 建 宇	主任	15773327754																																																																													
5		潘 程 亮		15775849271																																																																													
6		李 政 帆		15357591765																																																																													
7		左 勤 平		18940711340																																																																													
8		邵 大 泉		1572626480																																																																													
9		李 德 华		15708689772																																																																													
10		左 勤 平		18771883811																																																																													
11		曹 建 宇		15773327754																																																																													
12		徐 志 博		13092719251																																																																													
13		曹 建 宇		15773327754																																																																													
14		李 德 华		15708689772																																																																													
15		曹 建 宇		15773327754																																																																													
<p>Meeting attendance sheet (partial)</p>	<p>Questionnaire</p>																																																																																



Day labor station of Yanji Town Resettlement Area



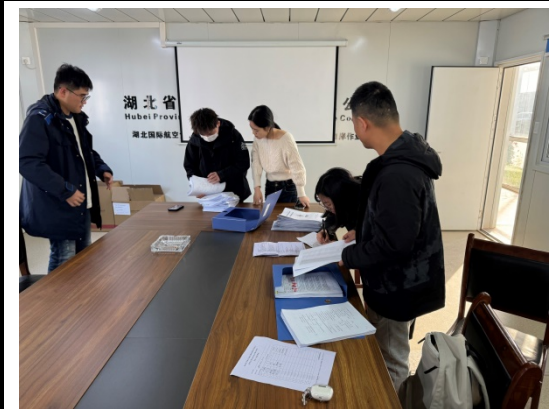
Interview with residents in the resettlement area



Status-quo investigation of Yanji Town Resettlement Area



Interview with Deputy Director of Yangye Town Resettlement Area



Project contractors at discussion



Seminar by AIIB PMO of Ezhou Linkong Group