



REPUBLIC OF TURKEY
MINISTRY OF TRANSPORT
AND INFRASTRUCTURE



TÜRKİYE EMERGENCY ROAD REHABILITATION AND RECONSTRUCTION PROJECT



STAKEHOLDER ENGAGEMENT PLAN

CNR-KGM-TERRRP-SEP-001

Final

STAKEHOLDER ENGAGEMENT PLAN		CNR-KGM-TERRRP-SEP-001
Final	Date: August 2024	Page 2 / 60



Bağlıca Mah. Çambayırı Cad. Çınar Plaza No:66/5 06790 Etimesgut/ ANKARA

Tel: +90 312 472 38 39 Fax: +90 312 472 39 33

Web: cinarmuhendislik.com

E-mail: cinar@cinarmuhendislik.com

All rights of this report are reserved.

All or part of this report cannot be reproduced, copied, electronically reproduced, traded, transmitted, sold, rented, used for any purpose, or used in any form and method in digital and/or electronic media without written permission from Çınar Engineering Consultancy Inc. as per the Law No. 5846 on Intellectual and Artistic Works amended with the Law No. 4110.



STAKEHOLDER ENGAGEMENT PLAN		CNR-KGM-TERRRP-SEP-001
Final	Date: August 2024	Page 3 / 60

Project Owner	Republic of Türkiye Ministry of Transport and Infrastructure General Directorate of Highways (KGM)
Address	Devlet Mah. İnönü Bulvarı No:14 06420 Çankaya/ANKARA
Contact Numbers	Telephone: +90 (312) 449 90 00 Fax: +90 (312) 449 71 55 E-mail: info@kgm.gov.tr
Project Title	Türkiye Emergency Road Rehabilitation and Reconstruction Project
Project Location	Hatay-Gaziantep-Adıyaman-Malatya-Elazığ
Consultant	Çınar Engineering Consultancy Inc. International Financed Projects Department
Address	Bağlıca Mah. Çambayırı Cad. Çınar Plaza No: 66/5 06790 Etimesgut / ANKARA
Contact Numbers	Telephone: +90 (312) 472 38 39 Fax: +90 (312) 472 39 33 E-mail: cinar@cinarmuhendislik.com
Report Submission Date: August 2024	
<i>The original project documents have been prepared in English. In case of discrepancies between the English and Turkish versions, the English version will prevail.</i>	



TABLE OF CONTENTS

TABLE OF CONTENTS	4
LIST OF TABLES	6
LIST OF FIGURES	6
ABBREVIATIONS AND ACRONYMS	7
1 INTRODUCTION	8
1.1 Project Description.....	8
1.2 Scope and Objectives.....	11
2 LEGAL FRAMEWORK	12
2.1 National Legislation	12
2.1.1 The Constitution of The Republic of Türkiye	12
2.1.2 Civil Law	12
2.1.3 Law on the Right to Information.....	12
2.1.4 Law on the Use of Right to Petition	12
2.2 International Standards	13
2.2.1 AİIB’s Environmental and Social Framework	13
3 ROLES AND RESPONSIBILITIES	15
3.1 Organizational Structure.....	15
3.2 Roles and Responsibilities	17
4 PREVIOUS STAKEHOLDER ENGAGEMENT ACTIVITIES	19
4.1 Stakeholder Engagement Activities During the Project’s Preparation Phase	19
5 STAKEHOLDER IDENTIFICATION	22
5.1 Methodology of the Identification.....	22
5.2 Project Area of Influence	22
5.3 Stakeholders.....	25
5.3.1 Affected Parties and Other Interested Parties	25
5.3.2 Vulnerable Groups.....	29
6 STAKEHOLDER ENGAGEMENT PROGRAM	30
6.1 Information Disclosure.....	30
6.2 Methods and Tools of Stakeholder Engagement and GRM.....	31
6.3 Stakeholder Engagement Program	33
7 STAKEHOLDER ENGAGEMENT ACTIVITIES DURING THE PROJECT’S DISCLOSURE PHASE	37
7.1 KGM 5th Region - Stakeholder Participation Meeting.....	37
7.2 KGM 8th Region - Stakeholder Participation Meeting.....	38
8 GRIEVANCE REDRESS MECHANISM	41
8.1 Integration of Project Level Grievance Redress Mechanism	41
8.1.1 Recording and Evaluation of Anonymous Complaints	42



STAKEHOLDER ENGAGEMENT PLAN		CNR-KGM-TERRRP-SEP-001
Final	Date: August 2024	Page 5 / 60

8.1.2	Addressing Sexual Exploitation and Abuse/Sexual Harassment (SEA/SH)	42
8.2	Internal Grievance Redress Mechanism (Worker GRM).....	43
8.3	CİMER: Turkish Presidential Communication Center	44
8.4	AiIB Project-Affected People's Mechanism (PPM).....	44
8.5	Workflow of the Project Level GRM.....	45
9	MONITORING AND REPORTING	47
	ANNEX 1: GRIEVANCE LOG.....	49
	ANNEX 2: REVISED GRIEVANCE REPORTING FORM FOR REAL PERSONS	50
	ANNEX 3: COMPLAINT APPLICATION FORM TO BE USED FOR WRITTEN COMPLAINTS TO BE RECEIVED THROUGH CHANNELS OTHER THAN THE WEBSITE (VIA MUKHTAR, LETTER, EMAIL, ETC.)	52
	ANNEX 4: SAMPLE GRIEVANCE CLOSURE FORM.....	53
	ANNEX 5: THE LIST OF PARTICIPANTS AND MEETING PHOTOGRAPHS OF THE KGM 5TH REGION STAKEHOLDER MEETING	54
	ANNEX 6: THE LIST OF PARTICIPANTS AND MEETING PHOTOGRAPHS OF THE KGM 8TH REGION STAKEHOLDER MEETING	56
	ANNEX 7: THE PROJECT MEETING INVITATION INFORMATION LETTER	58
	ANNEX 8: THE PROJECT ANNOUNCEMENTS, BROCHURES AND POSTERS	59



STAKEHOLDER ENGAGEMENT PLAN		CNR-KGM-TERRRP-SEP-001
Final	Date: August 2024	Page 6 / 60

LIST OF TABLES

Table 1. Project Summary Information	8
Table 2. Classification of the Sub-projects	9
Table 3. Roles and Responsibilities Regarding the Implementation of the SEP&GRM.....	17
Table 4. List of the Stakeholders	19
Table 5. Stakeholder Engagements During ESIA&ESMP Development Studies	20
Table 6. Project Aol Settlements and Region	24
Table 7. Stakeholders of the Project	25
Table 8. Stakeholder Engagement Program	33
Table 9. Principles and Standards of the GRM Workflow	45
Table 10. Monitoring Plan for the SEP	48

LIST OF FIGURES

Figure 1. Project Locations Map	10
Figure 2. ESMS Organizational Structure	16
Figure 3. Project Aol Diagram	23
Figure 4. Project Aol Location in Türkiye	24
Figure 5. Stakeholder Participation Meeting in Hatay Province – KGM 5 th Region	38
Figure 6. Stakeholder Participation Meeting in Malatya Province – KGM 8 th Region	40



ABBREVIATIONS AND ACRONYMS

AIIB	Asian Infrastructure Investment Bank
BOTAŞ	Petroleum Pipeline Corporation
CHPRBD	Cultural Heritage Preservation Regional Board Directorate
CHS	Community Health and Safety
ÇİMER	Turkish Presidential Communication Centre
ÇINAR	Çınar Engineering Consultancy Inc.
CLO	Community Liaison Officer
CNHPRP	Cultural and Natural Heritage Preservation Regional Board
E&S	Environmental and Social
EIA	Environmental Impact Assessment
ESEL	Environmental and Social Exclusion List
ESF	Environmental and Social Framework
ESIA	Environmental and Social Impact Assessment
ESMP	Environmental and Social Management Plan
ESMS	Environmental and Social Management System
ESP	Environmental and Social Policy
ESS	Environmental and Social Standards
EU	European Union
GBVH	Gender Based Violence and Harassment
GDCHM	General Directorate of Cultural Heritage and Museums
GRM	Grievance Redress Mechanism
ILO	International Labor Organization
KGM	General Directorate of Highways
LAP	Land Acquisition Plan
LARP	Land Acquisition and Resettlement Plan
MoAF	Ministry of Agriculture and Forestry
MoCT	Ministry of Culture and Tourism
MoEUCC	Ministry of Environment, Urbanization and Climate Change
MoTI	Ministry of Transport and Infrastructure
NGO	Non-governmental Organization
OHS	Occupational Health and Safety
OIZ	Organized Industrial Zone
PDoAF	Provincial Directorate of Agriculture and Forestry
PDoCT	Provincial Directorate of Culture and Tourism
PDoEUCC	Provincial Directorate of Environment, Urbanization and Climate Change
RP	Resettlement Plan
SEA/SH	Sexual Exploitation and Abuse/Sexual Harassment
SEP	Stakeholder Engagement Plan
SuTP	Syrians under Temporary Protection
TAG Highway	Tarsus Adana Gaziantep Highway
The Project	Türkiye Emergency Road Rehabilitation and Reconstruction Project



STAKEHOLDER ENGAGEMENT PLAN		CNR-KGM-TERRRP-SEP-001
Final	Date: August 2024	Page 8 / 60

1 INTRODUCTION

The Türkiye Emergency Road Rehabilitation and Reconstruction Project (the Project) has been planned to be prepared and implemented by General Directorate of Highways (KGM) under the Ministry of Transport and Infrastructure (MoTI) to ensure efficient execution and compliance with national regulations and Asian Infrastructure Investment Bank (AIIB) policies.

The Project will rehabilitate and reconstruct roads, tunnels, and bridges damaged by the February 2023 earthquakes that occurred in the southeast of Türkiye. The Project activities will be implemented through five (5) subprojects which will entail rehabilitation and enhancement of transportation infrastructure to meet required safety and capacity standards, as well as integration of climate-resilient measures to mitigate and withstand the impacts of seismic events in the future. The subprojects are located within the jurisdictions of the 5th Regional Directorate of Highways (Mersin) and 8th Regional Directorate of Highways (Elazığ).

The phased approach on environmental and social (E&S) assessment will be utilized for the proposed Project given the urgent need of assistance because of the earthquakes. In this context, a contract was signed between 5th Regional Directorate of Highways and Çınar Engineering Consultancy Inc. (ÇINAR) on 14.02.2024 for the preparation of Environmental and Social Documentation in accordance with the AIIB standards and national legislation.

1.1 Project Description

The Project will rehabilitate and reconstruct roads, tunnels, and bridges damaged by the February 2023 earthquakes that occurred in the southeast of Türkiye. The Project activities will be implemented through five (5) sub-projects which will entail rehabilitation and enhancement of transportation infrastructure to meet required safety and capacity standards, as well as integration of climate-resilient measures to mitigate and withstand the impacts of seismic events in the future.

The sub-projects are located within the jurisdictions of the 5th Regional Directorate of Highways (Mersin) and 8th Regional Directorate of Highways (Elazığ).

The Main Project summary information is provided in Table 1 and the sub-projects that are classified according to related Regional Directorates are given in Table 2.

Table 1. Project Summary Information

Project Name	Türkiye Emergency Road Rehabilitation and Reconstruction Project
Project Number	P000848
Sector/Subsector	Transport/Roads
Status of Financing	Under Preparation
Objective	To restore connectivity and enable safe and efficient movements of goods and people by rehabilitating essential transportation infrastructure located in the earthquake affected areas of Türkiye
Environmental and Social (E&S) Risk Category	Category B
Risk	Medium



Table 2. Classification of the Sub-projects

Responsible Regional Directorate	Subproject No.	Subproject Name	Province/ District
5 th Regional Directorate (Mersin)	1	TAG Highway Aslanlı Tunnel (Km:214+490)-Nurdağı Junction (Km: 223+115) Section, Repair of All Kinds of Damages and Strengthening of Viaducts Against Earthquakes in This Section Construction Work	Gaziantep/ Nurdağı
	2	Islahiye-Hassa-Kırıkhan Road (Km:24+500-84+500), Antakya-Reyhanlı Road (Km:0+000-42+500) Hot Bituminous Mixture Repair Work, Hatay Airport Road Soil Works, Art Structures and Superstructure Construction Work	Hatay
	3	Antakya-Samandağ Road (Including Samandağ Crossing) Km: 0+000-26+850 Section Supply Construction Works	Hatay/ Samandağ
8 th Regional Directorate (Elazığ)	4	(Malatya-Akçadağ) Junction - Gölbaşı Road (Construction Works of Erkenek Tunnel Damaged in Earthquake and Erkenek Tunnel-Karanlıkdere Section Damaged in Earthquake)	Malatya/ Doğanşehir Adıyaman/ Gölbaşı
	5	Repair of Technological Bridges Damaged in Earthquake (Tohma, Ağın, Beylerderesi Bridges Earthquake Damage Repair)	Malatya Elazığ

Province and district information regarding the sub-projects is summarized in Table 2. The main project encompasses Hatay, Gaziantep, Malatya, Elazığ, and Adıyaman Provinces. A map presenting the locations of all sub-projects is provided in Figure 1.

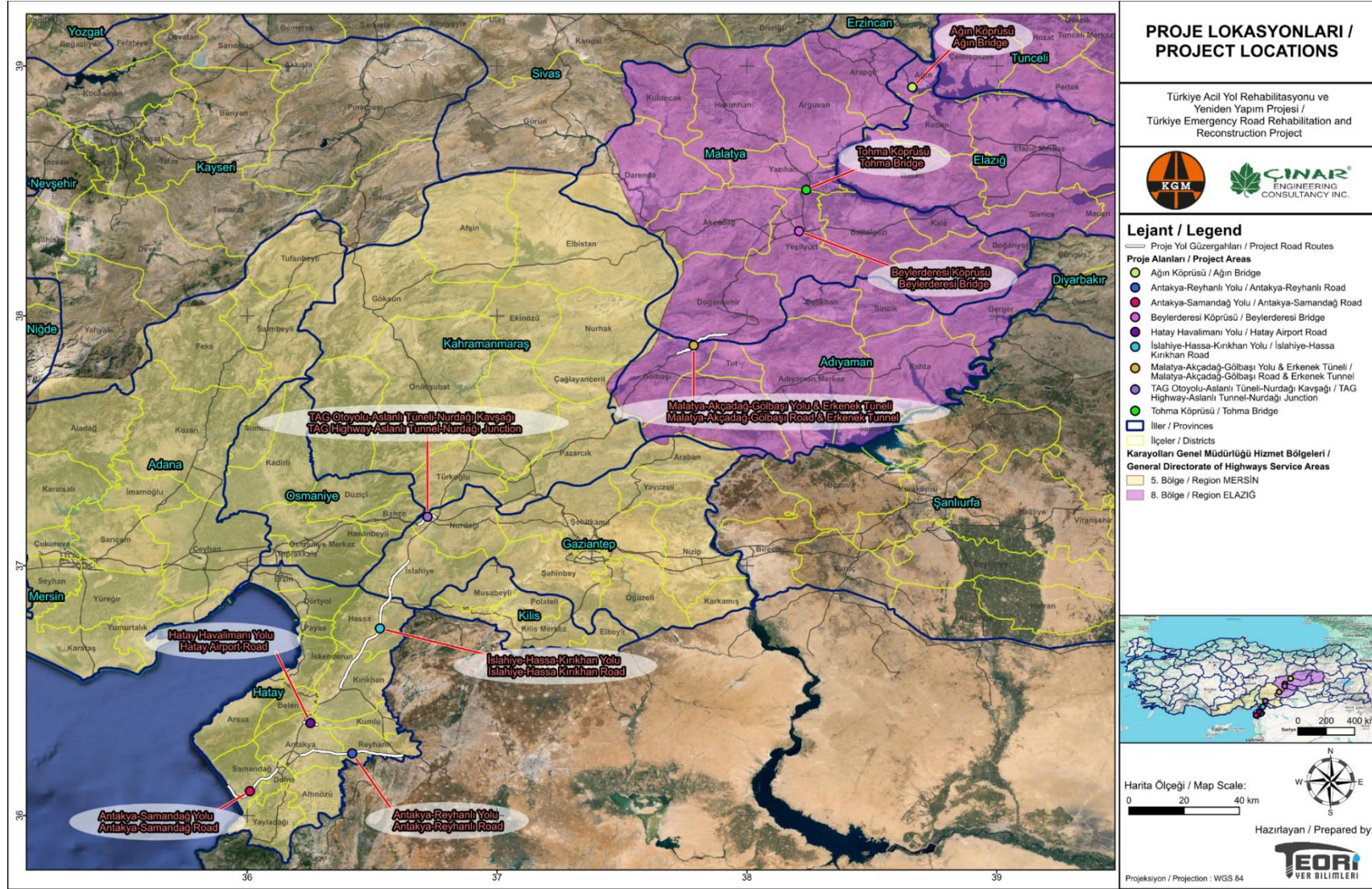


Figure 1. Project Locations Map



STAKEHOLDER ENGAGEMENT PLAN		CNR-KGM-TERRRP-SEP-001
Final	Date: August 2024	Page 11 / 60

1.2 Scope and Objectives

The overall purpose of this Stakeholder Engagement Plan (SEP) is to define a program for stakeholder engagement, including public information and consultations, throughout the Türkiye Emergency Road Rehabilitation and Reconstruction Project cycle.

The SEP outlines the ways the project team can communicate with stakeholders and includes a mechanism through which stakeholders can raise concerns, provide feedback or lodge complaints about project activities or any project-related activities.

This SEP establishes a systematic approach to stakeholder engagement that will help the Project identify stakeholders and establish and maintain constructive relationships with stakeholders in accordance with AIIB Environmental and Social Standard 1 (ESS1).

Throughout the project lifecycle, the stakeholder engagement process will follow the following key strategies to successfully manage social and environmental impacts.

- Within the scope of an open consultation approach with public participation, all notifications, verbal or written requests, complaints and suggestions from stakeholders will be carefully evaluated and necessary consultations will be held, without intervention, coercion or intimidation.
- Information regarding the project will be presented and explained to all stakeholders and parties in a format suitable for socio-cultural communication opportunities.
- The SEP, which was developed to define an effective stakeholder management approach appropriate to the characteristics and needs of sub-project activities and to identify stakeholders, also includes a Grievance Redress Mechanism (GRM) procedure.
- The SEP will support maintaining an inclusive approach throughout both stakeholder consultations and for the Project specific GRM. In line with this purpose, SEP defines the tools that will enable the participation of all stakeholder groups and Project-affected people (PAPs)¹. These efforts will include the development of alternative actions and communication tools, especially for the inclusion of women, persons with disabilities, the elderly, immigrant/refugee PAPs, workers and local communities. A proactive and functional communication approach will be adopted against the risk of exclusion of vulnerable groups from project opportunities, Grievance Redress Mechanism and stakeholder consultation processes.

Based on all these basic approaches, SEP was developed as a living document for the General Directorate of Highways (KGM) within the scope of the Türkiye Emergency Road Rehabilitation and Reconstruction Project. SEP will be implemented throughout the project and will be revised and updated when necessary.

Based on this general approach, the scope of SEP is as follows;

- Determining the legal framework of stakeholder engagement activities,
- Identifying stakeholders and developing a stakeholder map,
- Determining the policy that will form the framework of stakeholder participation,
- Determining the roles and responsibilities of human resources that will manage the stakeholder engagement process,
- Preparation of stakeholder consultation plan,
- Developing a Grievance Redress Mechanism,
- Determining the record keeping and reporting structure,
- Establishing a monitoring and reporting framework.

¹ People who may be beneficially or adversely affected by an AIIB-financed Project
<https://www.aiib.org/en/about-aiib/who-we-are/project-affected-peoples-mechanism/how-we-assist-you/rules/index.html>



STAKEHOLDER ENGAGEMENT PLAN		CNR-KGM-TERRRP-SEP-001
Final	Date: August 2024	Page 12 / 60

2 LEGAL FRAMEWORK

2.1 National Legislation

2.1.1 The Constitution of The Republic of Türkiye

“The Constitution of the Republic of Türkiye” is the main document related to the stakeholder engagement component of the Project. The articles of the Constitution related to engagement issues are listed below:

Freedom of Thought and Opinion

ARTICLE 25. Everyone has the right to freedom of thought and opinion. No one shall be compelled to reveal their thoughts and opinions for any reason or purpose, nor shall anyone be blamed or accused on account of their thoughts and opinions.

Freedom of Expression and Dissemination of Thought

ARTICLE 26. Everyone has the right to express and disseminate his thoughts and opinion by speech, in writing or pictures or through other media, individually or collectively. This right includes the freedom to receive and impart information and ideas without interference from official authorities.

Right of Petition

ARTICLE 74. Citizens and foreign residents considering the principle of reciprocity have the right to apply in writing to the competent authorities and the Turkish Grand National Assembly about the requests and complaints concerning themselves or the public.

2.1.2 Civil Law

Real property rights and restrictions are defined under the relevant section of Civil Law No. 4721 (Issued on 08.12.2001, Official Gazette No. 24607). Provisions of Turkish Civil Law will be considered and met in all phases of the Project.

2.1.3 Law on the Right to Information

Law on the Right to Information No. 4982 (Issued on 24.10.2003, Official Gazette No. 25269) regulates the procedure and the basis of the right to information according to the principles of equality, impartiality and openness that are the necessities of a democratic and transparent government. Everyone has the right to information on the activities of public institutions and professional organizations, which qualify as public institutions.

2.1.4 Law on the Use of Right to Petition

Turkish citizens have the right to apply in writing to the Turkish Grand National Assembly and the component authorities about the requests and complaints concerning themselves or the public according to Article 3 of the Law on the Use of Right to Petition No. 4982 (Issued on 01.11.1984, Official Gazette No. 3071). Foreign residents have this right considering the principle of reciprocity and by drawing up petitions in Turkish.



STAKEHOLDER ENGAGEMENT PLAN		CNR-KGM-TERRRP-SEP-001
Final	Date: August 2024	Page 13 / 60

2.2 International Standards

2.2.1 AIIB's Environmental and Social Framework

AIIB is a multilateral financial institution, whose purpose, as set out in its Articles of Agreement (Articles), is to: (a) foster sustainable economic development, create wealth and improve infrastructure connectivity in Asia, by investing in infrastructure and other productive sectors; and (b) promote regional cooperation and partnership in addressing development challenges by working in close collaboration with other multilateral and bilateral development institutions.

The Articles require the AIIB's operations to comply with policies addressing environmental and social impacts, among other policies. The Environmental and Social Framework (ESF) incorporates AIIB's policy addressing environmental and social impacts. The ESF amended in November 2022, replaces the May 2021 ESF and entered into effect on November 22, 2022.

The Environmental and Social Policy (ESP) of AIIB comprises mandatory environmental and social requirements for each Project and is accompanied by (a) three associated mandatory Environmental and Social Standards (ESSs) setting out requirements applicable to Clients on; and (b) an Environmental and Social Exclusion List (ESEL) which sets forth activities and items that are excluded from financing by AIIB and that the Client is required to exclude from the Project.

The ESSs cover the following:

- ESS 1: Environmental and Social Assessment and Management,
- ESS 2: Land Acquisition and Involuntary Resettlement, and
- ESS 3: Indigenous Peoples.

ESS 1 (Environmental and Social Assessment and Management): When the Bank, AIIB, has determined, in consultation with the Client, that the Project is likely to have adverse environmental and/or social risks and impacts, it requires the Client to conduct an environmental and social assessment relating to these risks and impacts, and design appropriate measures to avoid, minimize, mitigate, offset or compensate for them, all as required under ESS 1.

The objective of ESS 1 is to achieve the environmental and social soundness and sustainability of Projects and to support the integration of environmental and social considerations into the Project decision-making process and implementation.

ESS 1 applies if the Project is likely to have adverse environmental risks and impacts or social risks and impacts (or both). The scope of the environmental and social assessment and management measures are proportional to the risks and impacts of the Project. ESS 1 provides both for quality environmental and social assessment and for management of risks and impacts through effective mitigation and monitoring measures during the course of Project implementation.

ESS 2 (Land Acquisition and Involuntary Resettlement): If the Project is likely to involve Involuntary Resettlement the Bank requires the Client to address this in the social section of the assessment report, complemented by more in-depth coverage, as required under ESS 2. The Client covers this in a plan or framework, as applicable, which may be called a land acquisition and resettlement plan, land acquisition plan or resettlement plan (LARP/LAP/RP) or, in the case of a framework, a land acquisition and resettlement planning framework, land acquisition planning framework or resettlement planning framework (LARPF/LAPF/RPF). This plan or framework is provided to the Bank as a freestanding document, an annex to the assessment report, or incorporated as a recognizable element of the report.



STAKEHOLDER ENGAGEMENT PLAN		CNR-KGM-TERRRP-SEP-001
Final	Date: August 2024	Page 14 / 60

The objectives of ESS 2 are: (a) to avoid Involuntary Resettlement wherever feasible; (b) to minimize Involuntary Resettlement by exploring Project alternatives; (c) where avoidance of Involuntary Resettlement is not feasible, to enhance, or at least restore, the livelihoods of all displaced persons in real terms relative to pre-Project levels and to provide resettlement assistance; (d) to understand and address gender-related risks and differential impacts of Involuntary Resettlement; (e) to improve the overall socioeconomic status of the displaced poor and other vulnerable groups; and (f) to conceive and implement resettlement activities as sustainable development programs, providing sufficient resources to enable the persons displaced by the Project to share in Project benefits.

ESS 2 applies if the Project would or may involve Involuntary Resettlement (including Involuntary Resettlement of the past or foreseeable future that the Bank determines is directly linked to the Project).

ESS 3 is not applicable for the Projects in Türkiye, since there is no communities or groups of people which can be identified/defined as indigenous peoples in the country.



STAKEHOLDER ENGAGEMENT PLAN		CNR-KGM-TERRRP-SEP-001
Final	Date: August 2024	Page 15 / 60

3 ROLES AND RESPONSIBILITIES

The ESMP including SEP and GRM will be implemented with an adaptive management approach to respond to changes occurring at different stages of the Project and, as a living document, will be updated to reflect the current status of the Project and site features and management requirements when necessary. KGM and the contractor is obliged to implement the SEP with adequate and qualified personnel working under an appropriate organizational structure, in line with Project standards, in line with stakeholder participation and information sharing requirements, and to ensure that contractor/subcontractor(s) adopt management controls.

3.1 Organizational Structure

KGM is a public institution affiliated to the MoTI with a special budget for finance. KGM has a range of responsibilities related to the planning, construction, maintenance, and management of the country's road infrastructure KGM's duties are summarized below.

- **Planning and development of highways:** KGM is responsible for developing plans and strategies for the construction and expansion of Türkiye's highway network.
- **Construction and maintenance of highways:** KGM oversees the construction, maintenance, and repair of highways throughout Türkiye, including both urban and rural areas.
- **Traffic management:** KGM is involved in managing traffic flow, implementing safety measures, and improving transportation efficiency on highways.
- **Road safety:** KGM works to improve road safety by implementing measures such as signage, speed limits, and traffic enforcement.
- **Environmental protection:** KGM considers environmental factors in highway construction and maintenance projects to minimize their impact on the environment.
- **Coordination with other agencies:** KGM collaborates with other government agencies, local authorities, and private sector entities involved in transportation and infrastructure development.

Headquarter in Ankara, KGM operates through a network of 18 Regional Directorates strategically located throughout the country.

KGM serves as the implementing agency for the Project, operating through its central offices in Ankara and two of its Regional Directorates (5th and 8th). Subprojects are being implemented and supervised by the Regional Directorate responsible for the area where they are located.

The project will have one PIU in Ankara and two RIUs within Regional Directorates 5 and 8. The PIU will primarily coordinate project preparation and implementation, while the RIUs will manage day-to-day activities, procurement, supervision, and monitoring specific to their respective subprojects. PIU established within KGM consists of the Project Director, PIU Head, Environmental and Social Specialist(s), Procurement Specialist, Financial Management (FM) Specialist, Technical Specialist and Monitoring and Evaluation (M&E) Specialist along with two RIUs. PIU and each RIU have E&S staff to be able to manage effective implementation of the project. Within the scope of this sub-project, the key local authorities are KGM 8th Regional Directorate (Elazığ) and KGM 5th Regional Directorate (Mersin), which operate under KGM as a regional organization.

Organizational structure defined in Figure 2.



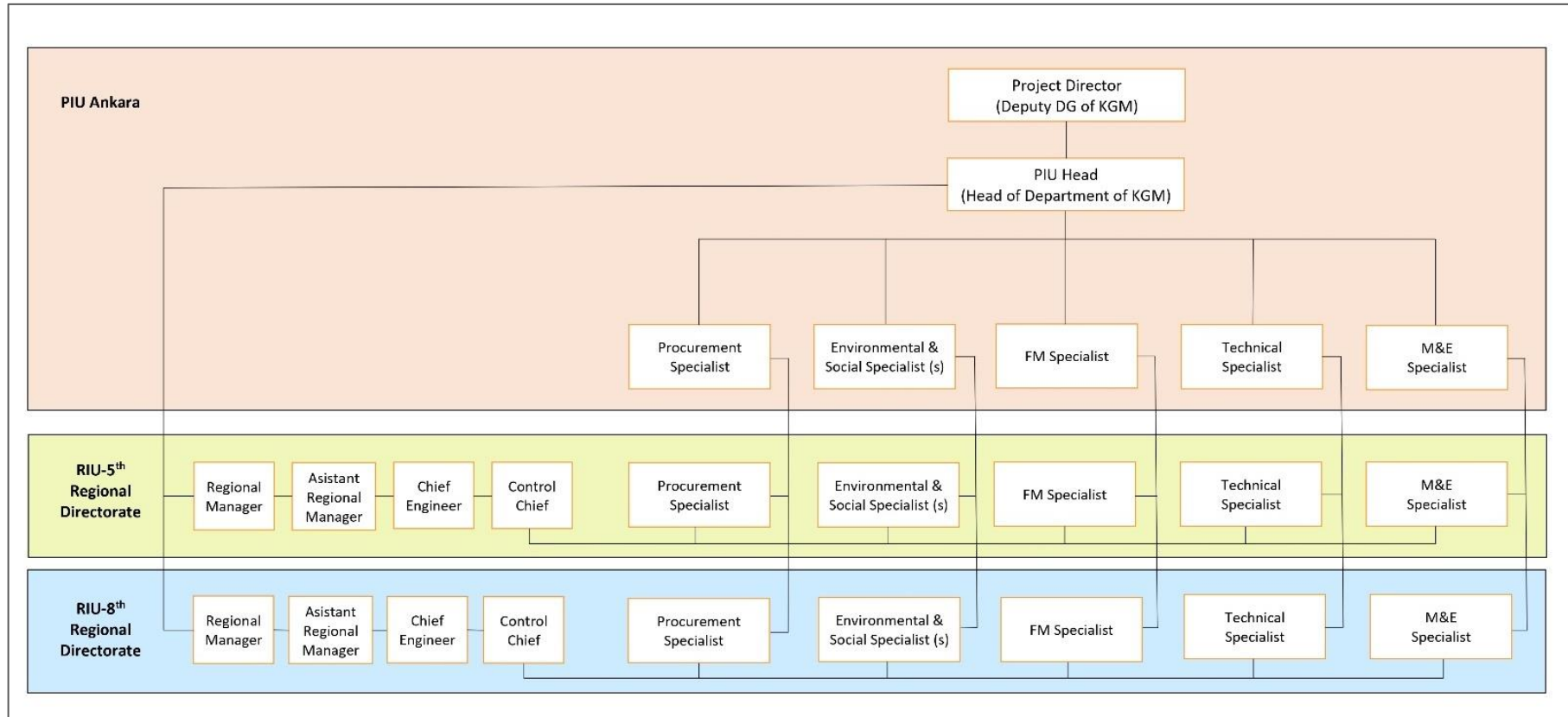


Figure 2. ESMS Organizational Structure



3.2 Roles and Responsibilities

As the project owner, it is the responsibility of KGM to manage the environmental and social issues of the project and to ensure that the necessary mechanisms are developed and implemented by the Contractor.

The roles and responsibilities for managing the SEP and the Grievance Redress Mechanism (GRM) are presented in Table 3.

Table 3. Roles and Responsibilities Regarding the Implementation of the SEP&GRM

KGM PIU
<p><u>Project Director and PIU Head</u></p> <ul style="list-style-type: none"> ▪ Responsible for the overall coordination and management of the project or program at the central level. ▪ Ensuring the effective implementation of ESMP and related E&S sub-management plans including SEP by KGM RIU, along with fulfillment of all commitments within the scope of ESMP and SEP. ▪ Ensuring the incorporation of the ESMP and SEP into the Contractors' civil work contract and sharing the ESMP with the Contractor by the RIU. ▪ Ensuring the submission of the periodic (semi-annual) reports to the Bank by the RIU regarding the implementation of the SEP. ▪ Ensuring the employment of competent EHS personnel and external experts by the RIU for the project by coordinating the RIU, if necessary. ▪ Coordinating actions and assessments made by the RIU in the event of changes due to engineering/design modifications, route/location alterations, changes in applicable environmental and social regulations, amendments to authority provisions, introduction of new environmental/social data (considering impacts of the project on stakeholders), changes in construction/operation strategies. <p><u>Environmental, Social and M&E Specialists</u></p> <ul style="list-style-type: none"> ▪ Coordinating with the RIU to provide EHS trainings (including training on ESMP, SEP and GRM) to relevant project personnel including the Contractors' workers. ▪ Ensuring the coordination in the conduct of environmental and social investigations, monitoring and inspections and evaluation of results regarding the implementation of SEP by the RIU. ▪ Reviewing and analyzing the environmental, social, and occupational health and safety accidents in coordination with the RIU for the purpose of tracking and analysis. ▪ Ensuring stakeholder participation in coordination with the RIU, implementing the grievance redress mechanism, and facilitating continuous information sharing through transparent communication channels. ▪ Ensuring the disclosure of the SEP and GRM to stakeholders by the RIU. ▪ Ensuring that the GRM is managed by the RIU in accordance with the GRM procedure. ▪ Ensuring stakeholder participation, implementing the Grievance Redress Mechanism, ensuring continuous information transfer through open communication. ▪ Ensuring immediate reporting to the Bank by the RIU of any incident or accident related to the Project that has or may have significant adverse effects on the environment, the affected communities, the public or workers including but not limited to; incidents and accidents encountered during construction works, environmental spills, etc.
RIU
<ul style="list-style-type: none"> ▪ Responsible for implementing project activities at the regional or local level according to the guidelines and instructions provided by the KGM PIU. ▪ Ensuring the implementation of the SEP and GRM along with fulfillment of all commitments within the scope of SEP. ▪ Stopping the work in any situation that threatens the environment, human health, and safety, and when encountering an accidental circumstance. ▪ Ensuring the follow-up and analysis of environmental, social, and occupational health and safety accidents. ▪ Engagement with local stakeholders, including communities, government authorities, and NGOs, to ensure effective project implementation and address local concerns. ▪ Identifying and addressing implementation challenges and bottlenecks at the regional level, working collaboratively with the KGM PIU and other stakeholders to find solutions. ▪ Monitoring of contractor activities in accordance with the SEP&GRM requirements. ▪ Informing AIB of progress and updates through Environmental and Social Monitoring Reports on a semi-



STAKEHOLDER ENGAGEMENT PLAN		CNR-KGM-TERRRP-SEP-001
Final	Date: August 2024	Page 18 / 60

<p>annual basis.</p> <ul style="list-style-type: none"> ▪ Ensuring compliance with project standards and requiring the contractor to make necessary emergency corrections in case of non-compliance.
Supervision Consultant
<ul style="list-style-type: none"> ▪ Supervision of construction and/or rehabilitation works and installation of equipment, ▪ Monitoring and evaluating the performance of the services provided by the Contractor, ▪ Identification and management of risks and impacts related to environmental, social and OHS issues, ▪ Ensuring initiation of corrective actions where necessary, ensuring implementation of mitigation measures by the contractor, ▪ Follow up and audit the contractor's activities periodically in line with the measures and commitments given in the ESMP and other related sub-plans including SEP&GM. ▪ Periodic monitoring and monthly reporting to the KGM RIU regarding the implementation of the ESMP, SEP&GRM.
Contractor
<ul style="list-style-type: none"> ▪ Fulfillment of all requirements of the ESMP and related E&S sub-management plans including SEP&GRM. ▪ Implementation of additional commitments determined by KGM RIU and/or AIIB. ▪ Developing its own site-specific Contractor's ESMP (C-ESMP) including relevant E&S sub-management plans and implementing this C-ESMP throughout the construction works after obtaining approval before the commencement of the construction works. ▪ By appointing a person responsible for SEP and GRM, ensuring SEP&GM management under the responsibility of this appointed person ▪ Ensuring compliance with project standards, obtaining all relevant permits and licenses. ▪ Monitoring construction activities (including subcontractor activities, if any) and taking measures within the scope of the ESMP and implementing SEP&GRM actions. ▪ Development of implementation and monitoring plans/procedures in line with the ESMP structure, implementation after the approval of the KGM RIU. ▪ Employment of competent EHS staff (at least one environmental and social expert, one full-time OHS expert and/or obtaining consultancy services) within the scope of the project. ▪ Providing the necessary trainings to all project staff including sub-contractor staff on environmental, social and occupational health and safety issues, SEP & GRM, and GBVH. ▪ Carrying out monthly monitoring by the person responsible for SEP&GRM and providing monthly reports of the Grievance Redress Mechanism to the Supervision Consultant and KGM RIU. ▪ Ensuring that the tools defined for the employee complaint mechanism are operational and working, developing the necessary complaint mechanism tools (complaint boxes, poster notifications, etc.)



4 PREVIOUS STAKEHOLDER ENGAGEMENT ACTIVITIES

4.1 Stakeholder Engagement Activities During the Project's Preparation Phase

This SEP was developed in early stages of the Project. At this early stage of the preliminary study, institutional consultations that played a role in the development of the Project were held within the scope of stakeholder consultations. As a result of written consultations with the following stakeholders, their institutional opinions were received.

Table 4. List of the Stakeholders

List of the Stakeholders Whose Institutional Opinions were Obtained
<ul style="list-style-type: none"> ▪ Ministry of Culture and Tourism (MoCT) ▪ MoCT, General Directorate of Investment and Enterprises, General Directorate of Cultural Heritage and Museums (GDCHM) ▪ Ministry of Energy and Natural Resources (MoENR), Petroleum Pipeline Corporation (BOTAŞ) ▪ BOTAŞ Akdeniz Operation Directorate ▪ BOTAŞ, Natural Gas Transmission III. Regional Directorate ▪ NATO Oil Pipeline ▪ Ministry of Agriculture and Forestry (MoAF), 7th Regional Directorate ▪ MoAF, 3rd Regional Directorate ▪ MoAF, 15th Regional Directorate ▪ Hatay Governorship Provincial Directorate of Environment, Urbanization and Climate Change (PDoEUCC) ▪ Malatya Governorship PDoEUCC ▪ Elazığ Governorship PDoEUCC ▪ Adiyaman Governorship PDoEUCC ▪ Hatay Governorship, Provincial Directorate of Culture and Tourism (PDoCT), ▪ Gaziantep Governorship PDoCT ▪ Adiyaman Governorship, PDoCT ▪ Elazığ Governorship, PDoCT, Cultural Affairs Branch Directorate ▪ Hatay Cultural Heritage Preservation Regional Board Directorate (CHPRBD) ▪ Gaziantep CHPRBD ▪ Hatay CHPRBD ▪ Adana Cultural and Natural Heritage Preservation Regional Board (CNHPRP) ▪ Hatay Airport ▪ Hatay Governorship Provincial Directorate of Agriculture and Forestry (PDoAF) ▪ Malatya Governorship PDoAF ▪ Elazığ Governorship PDoAF

Along with the stakeholders listed above who were consulted in the early stages of the Project, all other Project stakeholders identified and identified within the Project Aol are also included within this SEP as part of the Project Stakeholder engagement process.

In accordance with the written opinions received from the institutions, feedback has been received that the project activities will not cause any negative impacts within the Project area of influence.

In the field research carried out to develop the Environmental and Social Due Diligence (ESDD) report of the project, social assessments, observations, preliminary examinations and visits to construction sites were made on the routes of all Sub-Projects and the current situation determinations were reported. Based on these preliminary studies and scans, areas, settlements and locations where the effects of the Project may emerge have been identified. These identified areas were included in the field study carried out for the second time.

Within the scope of the second field studies carried out for ESIA, SEP and ESMP, interviews were held with fish farms and recreational facilities located in the Project impact area, household surveys and Mukhtar interviews were carried out, and construction sites were visited. Details of the stakeholder engagements are presented in Table 5.



STAKEHOLDER ENGAGEMENT PLAN		CNR-KGM-TERRRP-SEP-001
Final	Date: August 2024	Page 20 / 60

Table 5. Stakeholder Engagements During ESIA&ESMP Development Studies

Sub-project No	Sub-project	Province/ District	Mukhtar interviews held	Household surveys held	Stakeholder interviews with workplaces	Visited construction sites
1	TAG Highway Aslanlı Tunnel (Km:214+490)-Nurdağı Junction (Km: 223+115) Section, Repair of All Kinds of Damages and Strengthening of Viaducts Against Earthquakes in This Section Construction Work	Gaziantep/ Nurdağı	Başpınar	3	-	SNH Ceyhan Construction Site and Accommodation Area 5 th Regional Directorate of Highways guest house (Bahçe Accommodation Area)
			Arıcaklı	-		
			Bademli	-		
2	Islahiye-Hassa-Kırıkhan Road (Km:24+500-84+500), Antakya-Reyhanlı Road (Km:0+000-42+500) Hot Bituminous Mixture Repair Work, Hatay Airport Road Soil Works, Art Structures and Superstructure Construction Work	Hatay	Muratpaşa	-	-	FEZA Kızılkaya Construction Site and Accommodation Area DEHA Kuruyer Construction Site and Accommodation Area
			Narlıca Kuruyer	2		
			Değirmencik (Islahiye)	-		
			Demirköprü	3		
			Alaattin	2		
			Üzümdalı	-		
			Ardıçlı	7		
			Demrek/Deliçay	7		
			Aşağıoba	5		
			Paşaköy	4		
			Madenboyu	4		
Konuk	4					
3	Antakya-Samandağ Road (Including Samandağ Crossing) Km: 0+000-26+850 Section Supply Construction Works	Hatay/ Samandağ	Mağaracık	-	-	-
			Kurtderesi veya Yeni Mahalle	-		
			Sutaşı/ Defne	2		
			Ataköy	2		
			Uzunbağ	3		
4	(Malatya-Akçadağ) Junction - Gölbaşı Road (Construction Works of Erkenek Tunnel Damaged in Earthquake and Erkenek Tunnel-	Malatya/ Doğanşehir Adıyaman/ Gölbaşı	Karanlıkdere	-	Workplace interviews were held with the following 3	-



STAKEHOLDER ENGAGEMENT PLAN		CNR-KGM-TERRRP-SEP-001
Final	Date: August 2024	Page 21 / 60

Sub-project No	Sub-project	Province/ District	Mukhtar interviews held	Household surveys held	Stakeholder interviews with workplaces	Visited construction sites
	Karanlıkdere Section Damaged in Earthquake)				recreational facilities: Hakan's Place Uncle Halil's Place Blue Moon	
5	Repair of Technological Bridges Damaged in Earthquake (Tohma, Ađın, Beylerderesi Bridges Earthquake Damage Repair)	Malatya Elazıđ	Tohma Durucasu	-	Network fishing business meeting	<u>ENKON</u> Tohma Camping Area Camping area right next to the Ađın Bridge
			Yakınca (Yeşilyurt)	-	-	

During the interviews, opinions were received that since the Project continues mainly on the road route, there is no negative impact outside the route and that there is no negative impact on livelihoods and workplaces. The outlook for the project is positive. In addition, stakeholders' suggestions and opinions regarding the measures to be taken against potential risks and impacts and stakeholder consultation methods were received and these feedbacks were evaluated and reported in the relevant plans.



STAKEHOLDER ENGAGEMENT PLAN		CNR-KGM-TERRRP-SEP-001
Final	Date: August 2024	Page 22 / 60

5 STAKEHOLDER IDENTIFICATION

5.1 Methodology of the Identification

Stakeholder analysis was carried out as early as possible in the project life cycle, taking into account the dynamics between stakeholders and the risks and opportunities of their participation in the Project.

The purposes of the analyses can be defined as follows;

- To categorize stakeholders according to their level of influence and interest in the project/subprojects,
- Taking into account how each stakeholder group (vulnerable groups, individuals, organizations, government institutions, etc.) will be affected by the project and how it will affect the Project, ensuring their meaningful participation in the Project through timely information, participatory consultations,
- To ensure that the Grievance Redress Mechanism tools to be developed together with the SEP, are appropriate and accessible for the stakeholder groups,
- To support the management of the environmental and social impacts of the project by establishing healthy stakeholder relationships.

Identification of project stakeholders and determination of consultation methods with identified stakeholders is the first step in Stakeholder identification.

For the purposes of effective and tailored engagement, stakeholders of the proposed project can be divided into the following core categories:

- Affected Parties are persons, groups and other entities within the Project Area of Influence (Aoi) that are directly influenced (actually or potentially) by the project and/or have been identified as most susceptible to change associated with the project, and who need to be closely engaged in identifying impacts and their significance, as well as in decision-making on mitigation and management measures;
- Other Interested Parties are individuals/groups/entities that may not experience direct impacts from the Project but who consider or perceive their interests as being affected by the project and/or who could affect the project and the process of its implementation in some way; and
- Vulnerable Groups who may be disproportionately impacted or further disadvantaged by the Project as compared with any other groups due to their vulnerable status and that may require special engagement efforts to ensure their equal representation in the consultation and decision-making process associated with the project.

5.2 Project Area of Influence

The social Aoi of the Project has been determined by taking into account the direct and indirect effects of the Project, and in addition to the settlements that may be exposed to negative effects that may arise from the construction and operation activities of the Project, the settlements that may be positively affected by local employment and local purchasing opportunities have also been defined within the scope of the Aoi.

This Aoi includes the area likely to be affected by:

- The Project activities and facilities that are directly owned, operated, or managed (including by contractors) and that are a component of the project;
- Impacts from unplanned but predictable developments caused by the project that may occur later or at a different location; or



- Indirect project impacts on biodiversity or on ecosystem services upon which Affected Communities' livelihoods are dependent.

Therefore, in the light of the above explanations, the Project Area of Influence is defined in the following order;

- Directly Project activities impacted area which is defined as the foot-print of the Project,
- The area where direct environmental, social and economic impacts are spread as a result of the activities of the project,
- The broad area over which Project impacts and benefits are spread that may be affected by the results of the Project.

Based on this approach, the Project Area of Influence diagram is shown in Figure 3.

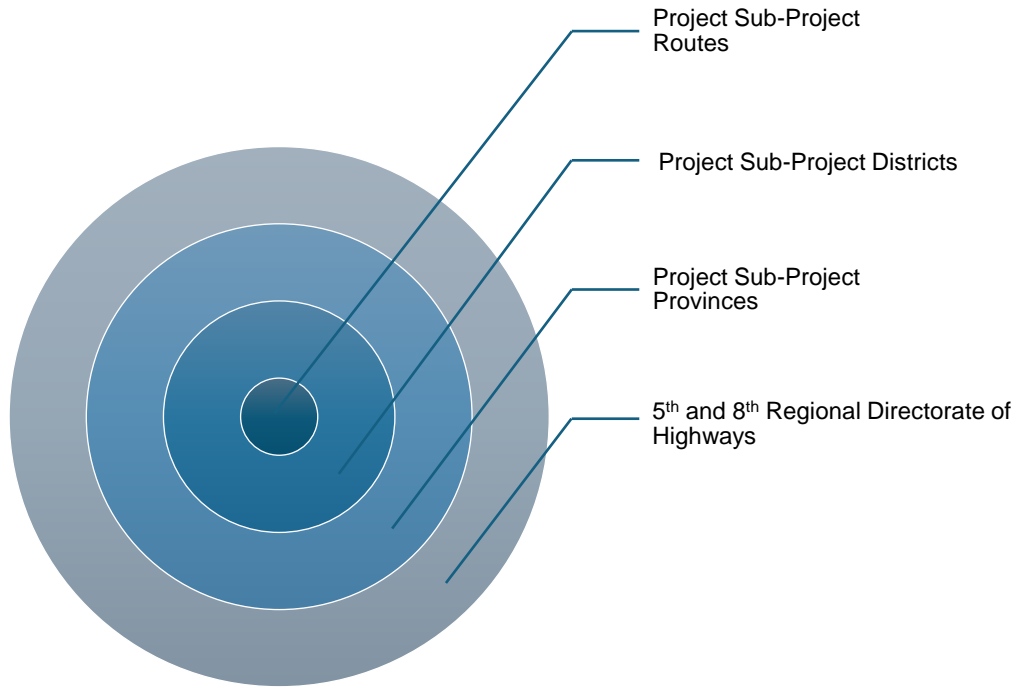


Figure 3. Project Aol Diagram

According to the Aol determination identification, Project Aol location in Türkiye is shown in Figure 4.



Figure 4. Project Aol Location in Türkiye

District and Provinces located in the Project Aol are shown in Table 6.

Table 6. Project Aol Settlements and Region

Responsible Regional Directorate	Subproject No.	District Level	Province Level
5 th Regional Directorate (Mersin)	1	Nurdağı	Gaziantep
	2	Islahiye Hassa Kırıkhan Reyhanlı	Hatay
	3	Samandağ Antakya	Hatay
8 th Regional Directorate (Elazığ)	4	Doğanşehir Gölbaşı Akçadağ	Malatya Adiyaman
	5	Darende Ağın	Malatya Elazığ

5.3 Stakeholders

5.3.1 Affected Parties and Other Interested Parties

Affected Parties include local communities, community members and other parties that may be subject to direct impacts from the Project. Specifically, the following individuals and groups are defined within this category:

- Local settlements and Mukhtars
- PAPs
- Municipalities
- Local Businesses

The projects' stakeholders also include interested parties other than the directly affected communities, including;

- Central and provincial governmental agencies
- Municipalities
- NGO's and organizations
- Academics
- Vulnerable/ Disadvantaged Individuals or Groups

Stakeholders of the Project including affected parties, other interested parties and vulnerable groups of the Project are given in Table 7.

Table 7. Stakeholders of the Project

Stakeholder Groups	Stakeholders	Affected Parties		Other Interested Parties
		Direct Stakeholders	Indirect Stakeholders	
Internal Stakeholders	General Directorate of Highways (KGM) 5th Regional Directorate of Highways 8th Regional Directorate of Highways Employees, Contractors and Workers	x		
Governmental agencies	Ministry of Culture and Tourism (MoCT), General Directorate of Investment and Enterprises, General Directorate of Cultural Heritage and Museums (GDCHM), Ministry of Energy and Natural Resources (MoENR), Petroleum Pipeline Corporation (BOTAŞ), BOTAS Akdeniz Operation Directorate BOTAS, Natural Gas Transmission III. Regional Directorate NATO Oil Pipeline Ministry of Agriculture and Forestry (MoAF), 7th Regional Directorate MoAF, 3rd Regional Directorate MoAF, 15th Regional Directorate Hatay Governorship Provincial Directorate of Environment, Urbanization and Climate Change (PDoEUCC) Malatya Governorship PDoEUCC Elazığ Governorship PDoEUCC Adiyaman Governorship PDoEUCC			x



Stakeholder Groups	Stakeholders	Affected Parties		Other Interested Parties						
		Direct Stakeholders	Indirect Stakeholders							
	Hatay Governorship, Provincial Directorate of Culture and Tourism (PDoCT), Gaziantep Governorship PDoCT Adıyaman Governorship, PDoCT Elazığ Governorship, PDoCT, Cultural Affairs Branch Directorate Hatay Cultural Heritage Preservation Regional Board Directorate (CHPRBD) Gaziantep CHPRBD Hatay CHPRBD Adana Cultural and Natural Heritage Preservation Regional Board (CNHPRP) Hatay Airport Hatay Governorship Provincial Directorate of Agriculture and Forestry (PDoAF) Malatya Governorship PDoAF Elazığ Governorship PDoAF									
PAPs	Communities living in the neighborhood settlements of the sub-project routes Mukhtars of the settlements									
	<table border="1"> <thead> <tr> <th>Sub-Project</th> <th>Settlements</th> </tr> </thead> <tbody> <tr> <td> P1: TAG Highway Aslanlı Tunnel (Km:214+490)-Nurdağı Junction (Km: 223+115) Section, Repair of All Kinds of Damages and Strengthening of Viaducts Against Earthquakes in This Section Construction Work </td> <td> Kızlaç Olucak Kurudere Başpınar Bademli </td> </tr> <tr> <td> P2: Islahiye-Hassa-Kırıkhan Road (Km:24+500-84+500), Antakya-Reyhanlı Road (Km:0+000-42+500) Hot Bituminous Mixture Repair Work, Hatay Airport Road Soil Works, Art Structures and Superstructure Construction Work </td> <td> Narlıca Ilıca Üzümdalı Madenboyu Demirköprü Melekli Telakrat Vazvaza Kötübüyük Sıçanlı Behlile Akserçayırı Bayır Yenişehir Harran İbrahimpaşa Osmanağa Paşaköy Arpadan </td> </tr> </tbody> </table>	Sub-Project	Settlements	P1: TAG Highway Aslanlı Tunnel (Km:214+490)-Nurdağı Junction (Km: 223+115) Section, Repair of All Kinds of Damages and Strengthening of Viaducts Against Earthquakes in This Section Construction Work	Kızlaç Olucak Kurudere Başpınar Bademli	P2: Islahiye-Hassa-Kırıkhan Road (Km:24+500-84+500), Antakya-Reyhanlı Road (Km:0+000-42+500) Hot Bituminous Mixture Repair Work, Hatay Airport Road Soil Works, Art Structures and Superstructure Construction Work	Narlıca Ilıca Üzümdalı Madenboyu Demirköprü Melekli Telakrat Vazvaza Kötübüyük Sıçanlı Behlile Akserçayırı Bayır Yenişehir Harran İbrahimpaşa Osmanağa Paşaköy Arpadan			
	Sub-Project	Settlements								
P1: TAG Highway Aslanlı Tunnel (Km:214+490)-Nurdağı Junction (Km: 223+115) Section, Repair of All Kinds of Damages and Strengthening of Viaducts Against Earthquakes in This Section Construction Work	Kızlaç Olucak Kurudere Başpınar Bademli									
P2: Islahiye-Hassa-Kırıkhan Road (Km:24+500-84+500), Antakya-Reyhanlı Road (Km:0+000-42+500) Hot Bituminous Mixture Repair Work, Hatay Airport Road Soil Works, Art Structures and Superstructure Construction Work	Narlıca Ilıca Üzümdalı Madenboyu Demirköprü Melekli Telakrat Vazvaza Kötübüyük Sıçanlı Behlile Akserçayırı Bayır Yenişehir Harran İbrahimpaşa Osmanağa Paşaköy Arpadan									
		x								

STAKEHOLDER ENGAGEMENT PLAN		CNR-KGM-TERRRP-SEP-001
Final	Date: August 2024	Page 27 / 60

Stakeholder Groups	Stakeholders	Affected Parties		Other Interested Parties
		Direct Stakeholders	Indirect Stakeholders	
	<p>Amik Ovası Ahrazlı Alaybeyli Ilıkpınar Karamağara Karaçağıl Güzelce Saylak Bektaşlı Demrek Yuvalı Küreci Eğribucak Ardıçlı Aşağıkarafakılı Girne Dervişpaşa Tiyek Akbez Salmanuşağı Sapanözü Esenler Dolan Sulumağara Aydınöğlü Kerküt Değirmencik Kırıkçalı Fevzipaşa Cevdetpaşa Bahçelievler</p>			
	<p>P3: Antakya-Samandağ Road (Including Samandağ Crossing) Km: 0+000-26+850 Section Supply Construction Works</p>	<p>Kapısıyu Mağaracık Kurtderesi Deniz Çiğdede Yeni Atatürk Sutaşı Kuşalanı Koyunoğlu Yeşilköy Değirmenbaşı Uzunbağ Karaçay Defne Hancağız Tavla Koçören Meydancık</p>		



STAKEHOLDER ENGAGEMENT PLAN		CNR-KGM-TERRRP-SEP-001
Final	Date: August 2024	Page 28 / 60

Stakeholder Groups	Stakeholders		Affected Parties		Other Interested Parties
			Direct Stakeholders	Indirect Stakeholders	
		Güney Söğüt Subaşı			
	P4: (Malatya-Akçadağ) Junction - Gölbaşı Road (Construction Works of Erkenek Tunnel Damaged in Earthquake and Erkenek Tunnel-Karanlıkdere Section Damaged in Earthquake)	Hürriyet Karanlıkdere Kınalıtaş Harmanlı/Yeni Harmanlı Cumhuriyet Canlara Karabahşılı Reşadiye			
	P5: Repair of Technological Bridges Damaged in Earthquake (Tohma, Ağın, Beylerderesi Bridges Earthquake Damage Repair)	Sütlüce Sürür Durucasu Yakınca Cevatpaşa Yedibağ Akpınar			
Municipalities	Metropolitan Municipalities of the affected Provinces: Hatay Gaziantep Malatya Adıyaman Elazığ				x
	Municipalities of the affected districts: Nurdağı Islahiye Hassa Kırıkhan Reyhanlı Samandağ Antakya Doğanşehir Gölbaşı Akçadağ Darende Ağın			x	
NGO's and organizations	Turkish Drivers and Automobile Association International Transporters Association Interested national NGOs Interested international NGOs Local logistics and transporters associations				x
Local sector	Service or Good Providers Local businesses Chamber of Tradesmen and Craftsmen				x
Academics	Universities				x



Stakeholder Groups	Stakeholders	Affected Parties		Other Interested Parties
		Direct Stakeholders	Indirect Stakeholders	
	Institutes			
Vulnerable/ Disadvantaged Individuals or Groups	People with physical or mental disabilities PAPs with chronic diseases or bedridden people Female heads of households Poor people living on government or association aid within Project Aol Elderly people in need of care and social assistance Unemployed (even though they are looking for a job) People who are homebound due to chronic illness Illiterate adults Earthquake victims Refugees, migrants, citizens with limited Turkish language abilities Villagers who do not own land and work on other people's lands as daily wage earners.	x		
Media including social media	Regional and local media			x

5.3.2 Vulnerable Groups

During the stakeholder identification process, one of the most important processes is the identification of the vulnerable groups who may be differently or disproportionately affected by the Project or may have difficulty participating in participation and development processes.

Environmental and social field surveys to develop the ESIA & ESMP documents of the Project were carried out in March 2024. Within the scope of these field studies, vulnerable groups in the Project impact area were identified through stakeholder interviews, surveys conducted with the Mukhtars of the Project-affected settlements and affected PAPs.

Evaluations regarding the distribution of Vulnerable Groups in the Project impact area are presented under the 4.8.2 Baseline Conditions section in the Environmental and Social Impact Assessment Report (CNR-KGM-TERRRP-ESIA-001) prepared for the Project.

- People with physical or mental disabilities
- PAPs with chronic diseases or bedridden people
- Female heads of households
- Poor people living on government or association aid within Project Aol
- Elderly people in need of care and social assistance
- Unemployed (even though they are looking for a job)
- People who are homebound due to chronic illness
- Illiterate adults
- Earthquake victims
- Refugees, migrants, citizens with limited Turkish language abilities
- Villagers who do not own land and work on other people's lands as daily wage earners.



STAKEHOLDER ENGAGEMENT PLAN		CNR-KGM-TERRRP-SEP-001
Final	Date: August 2024	Page 30 / 60

6 STAKEHOLDER ENGAGEMENT PROGRAM

Due to the urgency of the project, the consultations during the project preparation phase were conducted with the officials of the relevant ministries/state units and provincial-district directorates.

This SEP was consulted with stakeholders affected by the Project through information meetings and revised, finalized and updated in line with the feedback received from the stakeholders. The SEP will be continuously (at least biannually) reviewed and updated if needed throughout the project lifecycle.

6.1 Information Disclosure

Project stakeholder engagement meetings has been carried out in accordance with national legislation and AIIB ESS1 and presented under the Section of Summary of stakeholder engagement carried out during the preparation of the Project

Before the stakeholder participation meetings, the prepared Project documents were disclosed and made accessible on the Project website.

The accessibility information of these documents was explained in the information note sent to all stakeholders invited to the meeting, and the web address was shared. The introduction and meeting invitation information letter is provided in Annex-7.

Project stakeholder engagement meetings will be carried out in accordance with national legislation and AIIB ESS1, through the project lifecycle.

KGM will ensure the participation of all affected parties, including internal and external stakeholders such as KGM employees and contractors and their employees, institutions and organizations, NGOs, local institutions and municipalities, vulnerable groups, PAPs.

Project stakeholders will be informed about the Project through timely and meaningful consultations.

Stakeholder engagement will continue throughout the implementation and operation phases.

Stakeholders will be kept informed of the progress of the Project, receive feedback on the effectiveness of mitigation and recovery measures, and have the opportunity to raise concerns or complaints regarding (but not limited to):

1. Impacts identified as a result of the project
2. Mitigation measures
3. Implementation schedule
4. Roles and responsibilities
5. Monitoring and management measures
6. The project's Grievance Redress Mechanism

To ensure effective stakeholder participation, the SEP will be reviewed every six (6) months by Social Specialist at PIU working at KGM throughout the life of the Project.

A variety of engagement techniques will be used to engage and consult with stakeholders, as well as to collect and communicate information from stakeholders.

The needs and concerns of stakeholders, as well as the level of influence, will determine the basis for the communication tools and methods chosen to engage specific groups.

The language of communication with stakeholders throughout the project will be Turkish. However, if necessary, different languages will be taken into account in order to increase the effectiveness of participation activities and ensure the participation of all stakeholder groups.



STAKEHOLDER ENGAGEMENT PLAN		CNR-KGM-TERRRP-SEP-001
Final	Date: August 2024	Page 31 / 60

Engagement activities will continue to ensure meaningful participation and stakeholders will be provided with timely and effective information for this purpose.

The tools and methods defined for stakeholder participation have been developed to implement sustainable stakeholder participation in accordance with the cultural, social and economic conditions of all stakeholders, and will be diversified when necessary.

Consultations, information activities and meetings with stakeholder groups will be held in accordance with the stakeholders' interest and influence in the Project.

Disclosure meetings will be held for the stakeholder engagement plan and Grievance Redress Mechanism. Also, ESIA package (including ESMPs, RP, GAP and this SEP) will be disclosed on Project's website².

6.2 Methods and Tools of Stakeholder Engagement and GRM

The project's methods and tools for stakeholder engagement are described below, including the consultation tools currently used by KGM. These methods and tools will also be actively used within the scope of the Grievance Redress Mechanism which is identified under Section 8.

KGM Websites: The websites given below will be active tools in the stakeholder engagement process and GRM throughout the life of the Project.

- KGM Website: <https://www.kgm.gov.tr/Sayfalar/KGM/SiteTr/Root/SikayetGeriBildirim.aspx>
- Project Website: <https://www.kgm.gov.tr/Sayfalar/KGM/SiteTr/Projeler/DisKrediliProjeler.aspx>

E-mail address to external stakeholders: Project authorized persons can reach stakeholders via e-mail addresses in order to reach stakeholders and/or provide feedback.

- KGM e-mail: info@kgm.gov.tr
- 5. Regional Directorate e-mail: bol05@kgm.gov.tr
- 8. Regional Directorate e-mail: bol08@kgm.gov.tr
- Project e-mail: diskrediliprojeler@kgm.gov.tr

Online meetings: Consultation and information sharing meetings will be held with key stakeholders.

Online interviews can also be used for the application of research techniques such as in-depth interviews, surveys, focus group meetings to monitor and evaluate, obtain information and collect data, if needed. Records can be taken at these meetings, if deemed necessary and with the consent of all stakeholders.

Grievance Redress Mechanism: The grievance redress mechanism, which will include the operation of the process where the notifications, records, information and complaints of the stakeholders will be kept, the complaints will be evaluated and monitored and the results will be communicated to the stakeholders with the feedbacks, is an important stakeholder engagement management tool and method to be used throughout the project.

Alternative Tools: The following tools and methods are planned to be used simultaneously in order to ensure stakeholder participation of vulnerable/disadvantaged individuals/groups such as illiterate population, people with disabilities and refugee groups who do not have access to the internet, smart phones, social media or e-mail.

² <https://www.kgm.gov.tr/Sayfalar/KGM/SiteTr/Projeler/DisKrediliProjeler.aspx>



STAKEHOLDER ENGAGEMENT PLAN		CNR-KGM-TERRRP-SEP-001
Final	Date: August 2024	Page 32 / 60

Letter/post: Project brochures (including project information, grievance redress mechanism, etc.), postings, reports or announcements can be sent to disadvantaged or vulnerable groups or individuals who do not have access to the internet, smartphone, social media or e-mail.

Public boards: Announcements and information posters of communication channels related to the Project can be used in common public areas in surrounding settlements, mukhtar offices, municipalities.

Posters/brochures/flyers: Brochures/flyers with communication channels, announcements and information about the Project can be posted in the common public areas in the surrounding settlements, headman's offices, municipalities, provincial directorates, when necessary.

Local media: Announcements will be made in the printed and visual media at the stages and situations required by the Project.

Stakeholder visits: Face-to-face meetings will be held with stakeholders during the project process, and stakeholder visits will be made when necessary for monitoring and evaluation processes.

Consultation meetings: Consultation meetings can be held during the project process when needed and when stakeholders demand. Meetings will be held in places and places that will facilitate the participation of stakeholders.



6.3 Stakeholder Engagement Program

Information sharing and consultation issues, participation methods and implementation tools foreseen for the stakeholders of the project are presented in Table 8.

Table 8. Stakeholder Engagement Program

Project Stage	Topic of Consultation / Message	Target stakeholders	Method / Tool	Timetable	Frequency	Responsibilities
Project preparation and construction	Preparation of the E&S instruments for the Project: <ul style="list-style-type: none"> ▪ ESIA SEP including Grievance Redress Mechanism (GRM) ▪ ESMP ▪ Resettlement Plan (RP) ▪ Gender Action Plan (GAP) 	Affected parties: <ul style="list-style-type: none"> ▪ Governmental bodies ▪ Local Governmental bodies ▪ Local institutions ▪ The PAPs affected by land acquisition ▪ Communities living in the neighborhood settlements of the sub-project routes ▪ Mukhtars of the settlements 	<ul style="list-style-type: none"> ▪ E-mail to external stakeholders ▪ Official correspondences ▪ Online meetings ▪ Stakeholder visits ▪ Consultation meetings 	Within the first three months of the project start	At the beginning of the Project	KGM RIU
	Disclosure of the project information along with the E&S safeguard plans instruments <ul style="list-style-type: none"> ▪ ESIA ▪ ESMP ▪ SEP ▪ Grievance Redress Mechanism 	<ul style="list-style-type: none"> ▪ All stakeholders ▪ The PAPs affected by land acquisition ▪ Communities living in the neighborhood settlements of the sub-project routes ▪ Mukhtars of the settlements 	<ul style="list-style-type: none"> ▪ KGM Website ▪ E-mail to external stakeholders ▪ Online meetings ▪ Online interviews ▪ Letter/post ▪ Stakeholder visits ▪ Consultation meetings 	August 2024	At the beginning of the Project following the plans are approved	KGM RIU
		<ul style="list-style-type: none"> ▪ Vulnerable/disadvantaged individuals/ groups 	<ul style="list-style-type: none"> ▪ Stakeholder visits ▪ Consultation meetings 	August 2024	At the beginning of the Project following the plans are approved	KGM RIU
			<ul style="list-style-type: none"> ▪ KGM employees ▪ Contractors' workers 	<ul style="list-style-type: none"> ▪ KGM Website ▪ Online meetings ▪ Face to face meetings ▪ Posters/ brochures/ flyers 	August 2024	At the beginning of the Project



Project Stage	Topic of Consultation / Message	Target stakeholders	Method / Tool	Timetable	Frequency	Responsibilities
			<ul style="list-style-type: none"> Consultation meetings 		following the plans are approved	
	Disclosure of the RP	<ul style="list-style-type: none"> PAPs affected by land acquisition 	<ul style="list-style-type: none"> Consultation meetings KGM website GRM 	August 2024	At the beginning of the Project following the plans are approved	KGM RIU
	RP Consultation Meeting To inform PAPs affected by the land acquisition, construction schedule, land entry process, the RP implementation, and GRM	<ul style="list-style-type: none"> PAPs affected by land acquisition 	<ul style="list-style-type: none"> Stakeholder visits Consultation meetings Face to face meetings 	During the Land Acquisition	Regular meetings with the PAPs at each stage of the RP implementation process	KGM RIU
	Community health and safety information meetings for local residents	<ul style="list-style-type: none"> Vulnerable/ disadvantaged individuals/ groups The PAPs affected by land acquisition Communities living in the neighborhood settlements of the sub-project routes Mukhtars of the settlements 	<ul style="list-style-type: none"> Stakeholder visits Consultation meetings 	In case of Project activities that may negatively affect public health and safety 1 week before the days when there will be activities such as passage restrictions, road closures, traffic congestion, equipment shipment with heavy vehicles	When needed	Contractor
	Community health and safety information meetings for local residents before blasting activities	<ul style="list-style-type: none"> Communities living in the neighborhood settlements of the sub-project's quarries and borrow pits Mukhtars of the settlements 	<ul style="list-style-type: none"> Stakeholder visits Consultation meetings 	In case of possible negative effects such as vibration and sound effects that may occur due to blasting, Blasting will be conducted according to a consistent timetable agreed with the stakeholders who may be affected. If changes to the blasting timetable occur, nearby communities will be	When needed	Contractor



Project Stage	Topic of Consultation / Message	Target stakeholders	Method / Tool	Timetable	Frequency	Responsibilities
				immediately informed of those changes. Verbal and written notifications to be made 1 week and 1 day before the blasting activity (by posting information in the common areas of the affected villages)		
	Consultation Meetings to inform PAPs through the settlement heads about the Project, construction schedule, employment opportunities	<ul style="list-style-type: none"> Mukhtars of the settlements 	<ul style="list-style-type: none"> Stakeholder visits Consultation meetings 	During the construction	Bi-weekly and ad-hoc upon demands of the mukhtars	Contractor
	Consultation Meetings to inform PAPs through the settlement heads about the Project, construction schedule, employment opportunities	<ul style="list-style-type: none"> Communities living in the neighborhood settlements of the sub-project routes Vulnerable/disadvantaged individuals/ groups 	<ul style="list-style-type: none"> Stakeholder visits Consultation meetings 	During the construction	Monthly	Contractor
	Sharing information on the Project activities and processes	<ul style="list-style-type: none"> All Stakeholders 	<ul style="list-style-type: none"> KGM Website E-mail to external stakeholders Online meetings Consultation meetings 	As the milestones of the project are completed	When needed	KGM RIU
Implementation	<p>Disclosure of the project information along with the E&S safeguard plans instruments</p> <ul style="list-style-type: none"> ESIA ESMP SEP including GRM 	<p>Affected parties of;</p> <ul style="list-style-type: none"> Governmental bodies Local Governmental bodies KGM workers Vulnerable/disadvantaged individuals/ groups Municipalities Local sector NGOs 	<ul style="list-style-type: none"> KGM Website E-mail to external stakeholders Online meetings Online interviews Grievance Redress Mechanism Letter/post Stakeholder visits Consultation meetings 	After the updated plans are approved	As documents are updated or changed	Environment and Social Specialist of KGM RIU



Project Stage	Topic of Consultation / Message	Target stakeholders	Method / Tool	Timetable	Frequency	Responsibilities
		<ul style="list-style-type: none"> Vulnerable/ disadvantaged individuals/ groups 	<ul style="list-style-type: none"> Stakeholder visits Consultation meetings 	After the updated plans are approved	As documents are updated or changed	KGM RIU
	Sharing information on the Project activities and processes	<ul style="list-style-type: none"> All Stakeholders 	<ul style="list-style-type: none"> KGM Website E-mail to external stakeholders Online meetings 	As the milestones of the project are completed	When needed	KGM RIU
	Community health and safety information meetings for local residents	<ul style="list-style-type: none"> Vulnerable/disadvantaged individuals/ groups Communities living in the neighborhood settlements of the sub-project routes Mukhtars of the settlements 	<ul style="list-style-type: none"> Stakeholder visits Consultation meetings 	<p>In case of Project activities that may negatively affect public health and safety</p> <p>If there will be a road closure or temporary traffic impact during work such as maintenance and repair</p> <p>1 week before the days when there will be activities such as passage restrictions, road closures, traffic congestion, equipment shipment with heavy vehicles</p>	When needed	Contractor



STAKEHOLDER ENGAGEMENT PLAN		CNR-KGM-TERRRP-SEP-001
Final	Date: August 2024	Page 37 / 60

7 STAKEHOLDER ENGAGEMENT ACTIVITIES DURING THE PROJECT'S DISCLOSURE PHASE

The stakeholder participation meetings for the Türkiye Emergency Road Rehabilitation and Reconstruction Project were held on August 13, 2024, at the Hatay Metropolitan Municipality Transportation Department Meeting Hall (Hatay Province, Antakya District) for the sub-projects under the jurisdictions of the 5th Regional Directorate of Highways and on August 15, 2024, at the DSI 92nd Branch Directorate (Malatya Province, Yeşilyurt District) for the sub-projects under the jurisdictions of the 8th Regional Directorate of Highways.

Prior to the stakeholder participation meetings, the Project stakeholder meeting invitation letters (see Annex-7) were prepared and sent to the Project stakeholders via emails and official correspondences. Additionally, announcements were published in local newspapers for meeting announcements, announcement posters and brochures were prepared, and these posters and brochures were hung in the common areas (e.g. mukhtars' offices, gas stations, mosques, worker's accommodation areas) of the nearby settlements in the Project impact area. Project information announcements, posters and brochures are given in Annex-8.

7.1 KGM 5th Region - Stakeholder Participation Meeting

The following presentations and information were given during the KGM 5th Region stakeholder participation meeting held for P1, P2 and P3 Sub-Projects:

- Opening Speech: KGM PIU Head and Foreign Credits Branch Manager Sibel Saltaş Sakça,
- Antakya Samandağ Sub-project Presentation: KGM 5th Region Control Engineer-Burak Pirim,
- Antakya-Reyhanlı, Hatay Airport and İslahiye-Hassa-Kırıkhan Sub-Projects Presentation: KGM 5th Region Control Chief Mehmet Çakar,
- TAG Highway Sub-project Presentation: KGM 5th Region Land Engineer Murat Işık.

Following the project information presentations, the Environmental Expert of ÇINAR the ESIA consultant of the Project, made the Project and Stakeholder Participation Presentation prepared for the Project.

Within the scope of the presentation;

- The background of the Project and the Sub-Projects,
- The Environmental and Social Impact Assessment (ESIA) process,
- The works carried out and planned within the scope of ESIA,
- The land acquisition and the expropriation process,
- The E&S instruments prepared by ÇINAR,
- The roles and responsibilities regarding the ESMS monitoring process, and
- The Project's Grievance Redress Mechanism are explained to the stakeholders.

Following the speeches and presentations within the scope of the meeting, the following questions were received and answered.

- When the projects will be completed was asked and answered by the Project Contractors. This question is assessed in the ESIA, Section 3.1.1 and ESMP P1, P2, and P3 in the Section 1.2.
- Information about the expropriation process specifically for the Samandağ sub-project was requested and answered. This question is assessed in the ESIA Section 4.9, in the ESMP P3 Section 4.8.1.3, and RP of the Project.
- Although there was no objection to the sub-projects in general by the stakeholders, demands were expressed for the sub-projects to be completed as soon as possible and



STAKEHOLDER ENGAGEMENT PLAN		CNR-KGM-TERRRP-SEP-001
Final	Date: August 2024	Page 38 / 60

for the traffic flow to return to normal. The commencement dates and the anticipated completion dates of the sub-projects are given in the ESIA Section 3.1.1.

A photograph from the meeting held in Hatay province is given in Figure 5. A total of 58 people attended the meeting. Apart from ÇINAR and KGM PIU, 9 women participants from the local area and region attended the meeting. The signed meeting participation lists and meeting photographs are presented in Annex-5.



Figure 5. Stakeholder Participation Meeting in Hatay Province – KGM 5th Region

7.2 KGM 8th Region - Stakeholder Participation Meeting

The following presentations and information were given at the KGM 8th Region stakeholder participation meeting for the P4 and P5 Sub-Projects:

- Opening Speech: KGM PIU Head and Foreign Credits Branch Manager Sibel Saltaş Sakça,
- Repair of the Technological Bridges Sub-project Presentation: KGM 8th Region Control Chief Cengiz ATEŞÇELİK,
- Malatya-Akçadağ-Gölbaşı Road-Erkenek Tunnel Sub-project Presentation: KGM 8th Region Control Chief Cengiz Ateşçelik,

Following the project information presentations, the Environmental Expert of ÇINAR, the ESIA consultant of the Project, made the Project and Stakeholder Participation Presentation prepared for the Project.

Within the scope of the presentation;

- The background and sub-projects of the Project,



STAKEHOLDER ENGAGEMENT PLAN		CNR-KGM-TERRRP-SEP-001
Final	Date: August 2024	Page 39 / 60

- The Environmental and Social Impact Assessment (ESIA) process,
- The works carried out and planned within the scope of ESIA,
- The E&S instruments prepared by ÇINAR,
- The roles and responsibilities regarding the ESMS monitoring process, and
- The Project's Grievance Redress Mechanism were explained.

Following the speeches and presentations within the scope of the meeting, the following questions were taken and answered.

- It was asked whether measures regarding landslides were included in the studies (especially on the Karanlıkdere- Erkenek Tunnel side), and the necessary explanations were made by the KGM 8th Region. This question is assessed in the ESIA Section 4.1.3 and in the ESMP P4 Section 6.
- The Doğanşehir Municipality Mayor's Advisor mentioned the importance of the Erkenek Tunnel and stated that the deformation on the roads due to seismic effects after the earthquake caused many accidents. He requested that preliminary studies be carried out to fix the Erkenek Tunnel entrance before winter in order to prevent loss of life and property. KGM 8th Region Chief Engineer Ali Topkaya stated that the process was progressing rapidly, that first the service road would be repaired and an alternative road would be created, and then the traffic flow would be directed there during the construction of the Erkenek Tunnel. The community health and safety related issues are assessed in the ESIA Section 4.11 and in the ESMP P4 Section 4.11.
- The representative from the Malatya Provincial Directorate of Environment, Urbanization and Climate Change informed the KGM 8th Region about the process of obtaining connection road permits for the residences to be built by TOKİ.
- It was asked whether the effects on the highways after the earthquake were at the anticipated level. It was stated that the first 72 hours were very important, and AFAD had difficulties reaching the region. It was asked whether a new emergency plan had been prepared. The adequacy of alternative routes for search and rescue operations was asked. KGM 8th Region Chief Engineer Ali Topkaya answered the questions by emphasizing that the works with the new earthquake accelerations would be taken into consideration, especially that the landslide that occurred caused a 2–3-days delay on the Karanlıkdere side, and that the Erkenek Tunnel was damaged to a degree that would not affect transportation relatively. The existing road transport network and traffic impact of the project are assessed in the ESIA Section 4.11 and ESMP P4 Section 6. Besides, within the scope of the Project, Emergency Preparedness and Response Plan has been prepared.
- Doğanşehir Municipality Mayor Advisor stated that Hi-Ka İnşaat, the contractor of the P4 sub-project, did not contact the authorized authorities regarding the establishment of the Erkenek Construction Site, that there were deficiencies in the EIA and permit process regarding the installation of auxiliary/related facilities, and that there were many complaints from the public and the Mukhtars regarding the construction vehicles being brought to the site and the works being started. The construction site managers/responsible persons shared a phone number for the Contractor to contact them. The permits and licenses to be obtained within the scope of the project are given in the ESMP P4 Section 6 together with Chapters 2.1.1 and 2.1.2 of the ESIA.
- The Reşadiye Neighborhood Headman (Abuzer SULTANOĞLU) and 2 local PAPs expressed their complaints about the Reşadiye Limestone Quarry, which is planned to be operated. They stated that they had also met with the KGM 8th Region and the Contractor Hi-Ka İnşaat in the days before the meeting and that they opposed the operation of the quarry. They stated that they were very sensitive to noise and vibration after the earthquake and that they were psychologically disturbed by even the slightest sound/vibration. They also stated that the amount of groundwater in the region decreased after the earthquake and that they thought that the blasting to be carried out



STAKEHOLDER ENGAGEMENT PLAN		CNR-KGM-TERRRP-SEP-001
Final	Date: August 2024	Page 40 / 60

within the scope of the quarry activities would have an even worse effect on the groundwater. They stated that the blasting activities previously carried out in other mines in the region (approximately 10 years ago) affected their neighborhood and 2-3 houses were destroyed. On the other hand, they stated that the main sources of income in the neighborhood were agriculture and animal husbandry activities and that they wanted the quarry to be moved to a more suitable area. The mitigation measures related to noise and vibration, air quality, and water resources are given in the ESIA Section 4.2, 4.3, and 4.4 respectively. The required actions regarding blasting activities to be taken by the Contractor, under the supervision of KGM RIU, are also emphasized in this document Section 6.3.

A photograph from the meeting held in Malatya province is given in Figure 6. A total of 46 people attended the meeting. Apart from ÇINAR and KGM PIU, 2 women participants from the local area and region attended the meeting. The signed meeting participation lists and meeting photographs are presented in Annex-6.



Figure 6. Stakeholder Participation Meeting in Malatya Province – KGM 8th Region

The Stakeholder Engagement Program has been revised by taking into consideration all these feedbacks, suggestions and requests.



STAKEHOLDER ENGAGEMENT PLAN		CNR-KGM-TERRRP-SEP-001
Final	Date: August 2024	Page 41 / 60

8 GRIEVANCE REDRESS MECHANISM

The main purpose of the Grievance Redress Mechanism (GRM) is to help resolve project-related notifications and complaints in a timely, effective and efficient manner to the satisfaction of all stakeholders.

GRM is also one of the most important tools of the stakeholder participation management process, which enables stakeholders to convey their problems, complaints and concerns about the project to the relevant units of the project, and to resolve the complaints with correct methods and healthy communication.

The Grievance Redress Mechanism aims to effectively address and finalize the problems, complaints or concerns submitted by stakeholders, without expiration of time, and to maintain healthy, trust-based stakeholder participation. The Grievance Redress Mechanism aims to manage complaints in accordance with the AIIB ESF requirements.

This Grievance Redress Mechanism explains the functioning of the Project complaint mechanism, complaint management steps, tools, how the system will be managed, and how stakeholders can access the complaint mechanism.

GM sets standards and principles to establish safe and constructive effective stakeholder communication.

The complaint mechanism developed in this context;

- Clearly disclosed and informed to all stakeholders,
- Complaints from stakeholders are recorded,
- Complaints are evaluated and concluded within the framework and time period determined by the procedure,
- GM is designed as a completely free, accessible and secure system in which no information is shared with third parties as adverse data.

8.1 Integration of Project Level Grievance Redress Mechanism

The Project's SEP and GRM will be developed, taking into account the complaint mechanism of KGM.

Currently, complaints can be submitted to KGM using the "Complaint Notification Form for Natural Persons" and "Complaint Notification Form for Legal Entities" available on the website.

Within the scope of the project, GRM will continue to be integrated and used in accordance with AIIB ESFs.

The structured forms currently used within the scope of GRM will be revised in accordance with the Project SEP and GRM requirements and will be expanded with additional tools and methods.

When the operation phase begins, Project SEP tools and methods will continue to be applied.

Complaints submitted to KGM regarding the Project will be recorded with the phrase "Türkiye Emergency Road Rehabilitation and Reconstruction Project" and evaluation and solution steps will be taken. Notifications/complaints recorded in the data file and included in the evaluation process will be concluded through mutual communication and consultations with stakeholders.



STAKEHOLDER ENGAGEMENT PLAN		CNR-KGM-TERRRP-SEP-001
Final	Date: August 2024	Page 42 / 60

8.1.1 Recording and Evaluation of Anonymous Complaints

When both external and internal stakeholders have problems, concerns or difficulties in providing their contact information and identity information, the complaints submitted by the stakeholders will be evaluated first and recorded as Anonymous complaints or anonymous suggestions.

Stakeholders can convey all their wishes and complaints through the forms on the website for external stakeholders³, which have been revised with the addition of an "anonymous" option.

Stakeholders can submit their complaints about the Project by the tools defined under the section 6.2 Methods and Tools of Stakeholder Engagement and, without giving their name and contact address.

Complaints received anonymously will be evaluated by applying the steps defined in the workflow. Within the scope of the complaint, it will be evaluated through research/examination processes and each stage will be recorded in the complaint mechanism system. Third parties will not be informed about complaints that must be kept confidential and no official notification/response will be made.

Although there will be no official feedback on the solution to be implemented when the complaint is concluded, if it is an issue that needs to be informed to the public and it is deemed necessary, it can be announced to the stakeholders through common boards / public and general communication tools.

8.1.2 Addressing Sexual Exploitation and Abuse/Sexual Harassment (SEA/SH)

In line with the notifications received, the units and employees who first handle the notification will be trained on how to manage SEA/SH related complaints. All relevant units and staff of the project will be trained with the basic skills to respond to SEA/SH disclosures in a compassionate and non-judgmental manner and to know how to intervene.

Türkiye currently has a national referral system for gender-based violence, which is followed by all institutions, not only for domestic violence, but also for workplace harassment, bullying, violence and SEA/SH in the workplace. These are under the auspices of the Ministry of Family, Labor and Social Services and are already described in detail in both the Turkish Labor Code and the Turkish Penal Code, explaining unacceptable behavior and detailing the relevant penalties.

KGM is obliged to make evaluations in accordance with both the national legislation and the AIIB in this regard.

The grievances related to exploitation of female workers, including sexual harassment and abuse at the workplace and unfair treatment will be prioritized to take actions. The Environmental, Social and M&E Specialists, Project Director and PIU Head, Supervision Consultant shall be responsible for taking appropriate action in cases in which there is reason to believe that any right has been violated. The appropriate designated authorities will be informed about investigations into cases of Gender-based Violence/SEA/SH, and of the action taken as a result of such investigations.

- All grievances and feedbacks will be handled with a fair and objective approach. Transparency and accessibility are also two main concerns of this redress mechanism.
- In addition, the number, frequency, topics of grievances and feedbacks will be analyzed and reported periodically to the related units and administrative level.

³ <https://www.kgm.gov.tr/Sayfalar/KGM/SiteTr/Root/SikayetGeriBildirim.aspx>



STAKEHOLDER ENGAGEMENT PLAN		CNR-KGM-TERRRP-SEP-001
Final	Date: August 2024	Page 43 / 60

- Based on these detailed reports, the most frequently addressed issues are identified and improvement activities are initiated.

8.2 Internal Grievance Redress Mechanism (Worker GRM)

Worker Grievance Redress Mechanism is defined as the mechanism that receives complaints from Project employees (including both direct and indirect employees) in accordance with the AIIB ESS 1.

Each sub-project main Contractors establish and implement a Grievance Redress Mechanism for the workforce, including subcontractors, in the early stages of the Project.

Besides the internal Grievance Redress Mechanism described below will be open to all employees within the scope of the Project including all construction contractor workers.

Project workers/site managers have been informed about the KGM SEP and GRM procedure and the Project level complaint mechanism, through the Project stakeholder engagement meetings. In addition, SEP and GRM procedure and the Project level complaint mechanism information posters were hung in construction sites and common areas.

Meeting participant lists are presented in Annex-6 and Annex-7, and photographs of the posters hung in workplaces are presented in Annex-8. The Contractor GRM will ensure that any employee who raises a grievance will not be subject to any retaliation.

In addition, the following methods will be taken into consideration in managing internal complaints.

The Internal Grievance Redress Mechanism will be accessible for all type of the workers'/ sub-contractor's workers.

Complaints will be collected and reported to be managed in accordance with the SEP and GRM Procedure.

Employee complaints will be kept in the records of the main contractors of the Project, in the data recording log prepared for the "Türkiye Emergency Road Rehabilitation and Reconstruction Project" and presented in Annex 1: Grievance Log. These records will be reported to KGM every month. KGM Project will monitor the records received from the main contractors on a monthly basis and report them to the Bank quarterly.

The Grievance Redress Mechanism data log which is defined above will be a database that will include the operation of the process where the notifications, records, information and complaints of the workers will be kept, the complaints will be evaluated and monitored, and the results will be communicated to the complainant with the feedbacks.

The grievance boxes will be available in places such as the cafeteria, common rest area, work area, where employees can easily reach, but away from monitoring cameras. Boxes will be checked regularly and can only be opened by the responsible person to record in the Grievance Log. This system will be an important stakeholder engagement management tool and method for the Grievance Redress Mechanism to be used throughout the project and will be expanded and revised according to the Grievance Redress Mechanism procedure requirements.

In the Contractor Grievance Log, the complaint records will be kept according to the subjects of internal complaints. Internal complaints during this development process will be classified by the following titles;

- According to the subject (including environmental issues, working conditions, service, food, employee relations, equipment, discrimination, zero-tolerance violence, abuse, harassment, forced labor),



STAKEHOLDER ENGAGEMENT PLAN		CNR-KGM-TERRRP-SEP-001
Final	Date: August 2024	Page 44 / 60

- According to the gender of the complainant,
- According to the situation of the complaint (open/close)
- According to the anonymous/contactable complaints.

Notification of Employees' Requests via email Address and Website: All employees can write their complaints, feedback, and suggestions, which they can make with cards, to the email addresses of the relevant persons. This information will be communicated to the employees through the handbook. Feedback received here will be recorded in the Grievance Redress Mechanism and the process will be operated.

8.3 CİMER: Turkish Presidential Communication Center

Third national GRM is "CİMER" which is "Cumhurbaşkanlığı İletişim Merkezi - Turkish Presidential Communication Center" which is also a leg of the Project GRM.

Grievances can be conveyed by:

- Hotline "Alo 150" (established by Türk Telecom),
- Written - Online via www.cimer.gov.tr, and
- Written – Post via T.C Cumhurbaşkanlığı Külliyesi 06560 Beştepe, Ankara, TÜRKİYE

CİMER conveys 99% of received complaints to related governmental institutions.

8.4 AIIB Project-Affected People's Mechanism (PPM)

AIIB has established a Project-affected People's Mechanism (PPM) to provide an opportunity for an independent and impartial review of submissions from Project-affected people who believe they have been or are likely to be adversely affected by AIIB's failure to implement the ESP when the complaints cannot be addressed satisfactorily through Project-level GRM or AIIB Management's processes. [AIIB Policy on the Project-affected People's Mechanism](#) and [Rules of Procedure of the PPM](#) guide the PPM. The Complaints-resolution, Evaluation, and Integrity Unit (CEIU) is responsible for the functioning of the PPM.

The PPM's submission-handling functions include:

(1) Project Processing Queries

A Project Processing Query (PPQ) is designed to enable PAP to rapidly resolve their concerns about simple matters that arise during AIIB's environmental and social due diligence of a Project and do not require dispute resolution. The due diligence includes screening, categorization, and assessment of the environmental or social impacts of the Project. PPQ can include inquiries about the consultation process related to a Project or requests to address environmental nuisances such as dust, noise, or mobility restrictions experienced during Project preparation.

(2) Requests for Dispute Resolution

Requests for Dispute Resolution (RDR) allow the PPM to seek to facilitate and coordinate the resolution of a dispute that has arisen over measures required to mitigate known and quantifiable potential or actual material adverse environment and social impacts that occur during AIIB's due diligence of a Project or Project implementation. The parties to the dispute typically include the Client and the Requestors. Still, they may also involve Management and contractors or other parties involved in the Project processing or implementation. This process aims to reach a time-bound and monitorable dispute resolution agreement between the parties concerned on actions to mitigate these impacts. Under this process, the PPM explores the PAP's mutually acceptable dispute resolution methods. This process may include consultative



dialogue, information sharing, joint fact-finding, and creating a mediation mechanism or other methods.

(3) Requests for Compliance Review

The process under a Request for Compliance Review (RCR) involves an investigation by the PPM of allegations by Project-affected people that AIIB has failed to comply with its obligations under the ESP in its environmental and social due diligence of a Project during Project preparation or its oversight of the Project during implementation, thereby causing or being likely to cause material adverse ecological or social impacts on the Project-affected people. If the allegations are substantiated, the process includes reviewing any action plan proposed by Management to address these impacts.

Further details are available on the following website:

<https://www.aiib.org/en/about-aiib/who-we-are/project-affected-peoples-mechanism/how-we-assist-you/index.html>

8.5 Workflow of the Project Level GRM

The operation of the complaint mechanism will be carried out in accordance with the operation in the workflow given in Table 9.

Table 9. Principles and Standards of the GRM Workflow

Workflow	Notification Status	Principles and Standards
Receiving the complaint	Notification has been received.	Complaints can be submitted verbally or in writing using any of the tools described in my "Tools and Methods for Stakeholder Engagement" section.
Registration of the complaint	The notification has been recorded.	The complaint received is recorded within two (2) days at the latest.
Evaluation	Under evaluation.	Immediately after the complaint is registered, the social expert will make the initial complaint assessment.
Confirmation notification of receipt of the complaint	Stakeholder is informed.	The stakeholder will be notified that the complaint has been received and recorded. Feedback will be provided based on the complaint's transmission method (mail, telephone, etc.).
Research and Review	Action has been assigned.	Social expert will assign the complaint to the relevant unit or person who needs to develop the solution based on the complaint and define his/her role.
Feedback to stakeholders	Research/review stage.	The relevant unit will develop a solution and corrective action within 10 days following the grievance recorded, obtain the necessary approvals, and report the result to the social specialist.
Corrective action implementation	Final feedback is given to the stakeholder.	Corrective action will be explained to the complainant, consulted and agreed upon.
Closing the complaint	Corrective action has been implemented.	The existing complaint will be eliminated by applying solution/corrective action.
Monitoring	Grievance closed.	It will be determined that the current problem or complaint has disappeared/the approval of the complainant will be obtained and then the complaint will be closed within 30 days at the latest from the date of registration.
Receiving the complaint	Tracking ongoing.	The result of the corrective action is The effectiveness of the corrective action, Assessment of remaining risks or impacts,



STAKEHOLDER ENGAGEMENT PLAN		CNR-KGM-TERRRP-SEP-001
Final	Date: August 2024	Page 46 / 60

Workflow	Notification Status	Principles and Standards
		<p>Complainant satisfaction will be recorded and the process will be monitored.</p> <p>If it cannot be closed or an agreement is not reached, an evaluation and additional studies planning report will be prepared and presented to the management.</p>



STAKEHOLDER ENGAGEMENT PLAN		CNR-KGM-TERRRP-SEP-001
Final	Date: August 2024	Page 47 / 60

9 MONITORING AND REPORTING

In accordance with the document's objectives and scope, the SEP will be revised periodically (at least every six months) and updated as necessary during project implementation in order to manage Project stakeholder participation in the most effective way.

Separate from this process, any significant changes to the Project-related activities and program during the reviews will be reflected in the SEP.

To monitor the currency of the plan, the effectiveness of communication tools and the functionality of the complaint mechanism, the Supervision Consultant will conduct monthly site visits and prepare monthly monitoring reports utilizing information provided in the Contractors' monthly progress reports. These reports will be submitted to KGM RIU. KGM RIU will prepare semi-annual monitoring reports and submit them to the KGM PIU and AIIB.

According to the monitoring results, necessary improvements will be made to ensure the effectiveness of communication tools and the functionality of the complaint mechanism. During these monitoring, both the number and quality of complaints and information requests will be evaluated,

The project's ability to handle incoming notifications and complaints in a timely and effective manner will be evaluated.

Within the scope of these monitoring studies, the Key Performance Indicators (KPIs) are:

1. The number of KGM employees who were trained, provided information and shared their feedback about the project,
2. Number of consultations held within a reporting period (i.e. quarterly), number of stakeholder engagement activities, topics, participants, feedback.
3. Number of project complaints received within a reporting period (i.e. quarterly), and number resolved within the anticipated timeline.



Table 10. Monitoring Plan for the SEP

ID	Issue	Key Performance Indicators	Target or Threshold Values	Legal Requirements for Monitoring	Monitoring Method	Monitoring Frequency	Reporting Frequency	Responsible Party
1.	SEP and GRM trainings	<ul style="list-style-type: none"> ▪ Number of trainings ▪ Number of personnel participating in training ▪ Number of non-compliances encountered in the workflow process 	Ensuring that all relevant personnel participate in training	<ul style="list-style-type: none"> ▪ National Legislation ▪ AIIB ESS1 	<ul style="list-style-type: none"> ▪ Training records ▪ Observation of the personnel behavior ▪ Internal audits and reports 	Monthly	Monthly	Contractor
						Monthly	Semi-annually	KGM RIU
						Monthly	Monthly	Supervision Consultant
2.	Disclosure of the SEP and GRM to stakeholders	<ul style="list-style-type: none"> ▪ Number of meetings of stakeholders participating in meetings 	Ensuring that all relevant stakeholders invited and informed on the disclosure meetings	<ul style="list-style-type: none"> ▪ National Legislation ▪ AIIB ESS1 	<ul style="list-style-type: none"> ▪ Meeting records ▪ Participation list ▪ MoM of the disclosure meetings 	Monthly	Semi-annually	KGM RIU
						Monthly	Monthly	Supervision Consultant
3.	Disclosure of the SEP and GRM to KGM Employees and Project workers	<ul style="list-style-type: none"> ▪ Number of meetings ▪ Number of personnel informed 	Ensuring that all relevant personnel informed on SEP and GRM	<ul style="list-style-type: none"> ▪ National Legislation ▪ AIIB ESS1 	<ul style="list-style-type: none"> ▪ Meeting records ▪ Participation list ▪ MoM of the disclosure meetings 	Monthly	Semi-annually	KGM RIU
						Monthly	Monthly	Contractor
4.	Community health and safety information meetings	<ul style="list-style-type: none"> ▪ Number of meetings ▪ Number of personnel informed 	Ensuring that all relevant stakeholders invited and informed on the CHS issues	<ul style="list-style-type: none"> ▪ National Legislation ▪ AIIB ESS1 	<ul style="list-style-type: none"> ▪ Meeting records ▪ Participation list 	Monthly	Semi-annually	KGM RIU
						Monthly	Monthly	Contractor



ANNEX 1: GRIEVANCE LOG

GRIEVANCE LOG																					
Suggestion/ Complaint Form Registration No:	Notification date	The tool/ channel through which the complaint received was conveyed	Sub- Project	Contractor	Category of the grievance	Subject of the grievance	Explanation of the grievance	Province	District	Village	Name and surname of the stakeholder (if anonymous, anonymous option will be entered)	Gender of the stakeholder	Phone number of the stakeholder	Address of the stakeholder	Feedback method preferred by the stakeholder	Email address of the stakeholder	Corrective action developed for the complaint	Responsible unit to implement corrective action	Result of the action taken	Close date	Budget



ANNEX 2: REVISED GRIEVANCE REPORTING FORM FOR REAL PERSONS

This Form will be disclosed on the Project website for the use of all external stakeholders⁴.

Name and surname:		
Gender:		
Turkish republic identification number		
Check here for anonymous option ()		
Telephone:		
Address Type	Home address	Business Address
Address		
Province:		
District:		
Village/neighborhood:		
Address description:		
Email Address		
Grievance Category	Asphalt Information Bad road (State and Provincial road) Rough road (Highway) landslides Human Resources Expropriation Issue closed road snow fight intersections Regarding OGS and HGS Park areas and afforestation Art structures (Repair) Art structures (Construction) Flooding Traffic signs patch work Pedestrian underpass and overpass requests Road asphalt condition Roadside Facilities road line	

⁴ <https://www.kgm.gov.tr/Sayfalar/KGM/SiteTr/Projeler/DisKrediliProjeler.aspx>



	Road status information Road salting work Road Construction issue Damage to the road Other
Subject of the Complaint	
Complaint Detail	
Complaint solution proposal	
Option to get feedback	
Subject of the Complaint	E-mail Telephone SMS I don't want to receive feedback



STAKEHOLDER ENGAGEMENT PLAN		CNR-KGM-TERRRP-SEP-001
Final	Date: August 2024	Page 52 / 60

ANNEX 3: COMPLAINT APPLICATION FORM TO BE USED FOR WRITTEN COMPLAINTS TO BE RECEIVED THROUGH CHANNELS OTHER THAN THE WEBSITE (VIA MUKHTAR, LETTER, EMAIL, ETC.).

Şikayetin Alındığı Yer/ Location of Complaints Received		Tarih/ Date
Alan Yetkilinin Adı/ Name of Person in Charge		Şikayet Kayıt No/ Complaint Register Number
ŞİKÂYET SAHİBİ / COMPLAINANT INFO (Şikâyet Sahibi kimlik bilgilerini vermeden anonim olarak doldurabilir, ancak kendisine geri dönüş şeklini bu formda belirtmesi gerekmektedir. / The Complainant may submit application anonymously, however in this form the Complainant should indicate the feedback mechanism to respond.)		
Ad Soyad/ Name Surname		Şikâyetin Geliş Yolu / Form of Complaint:
TC Kimlik No/ Identification Number		
Telefon/ E-Posta Telephone/ E-mail		
Mahalle-Köy-İlçe-İl/ Neighborhood-Village -District - Province		
ŞİKÂYET DETAYLARI / DETAILS OF COMPLAINT		
Şikâyet Konusu / Complaint		
Şikâyet sahibi tarafından talep edilen çözüm / Solution requested by the Complainant		
Şikâyeti Alan Yetkilinin Ad Soyad ve İmzası Name Surname and Signature of the Registerer	Şikâyet Sahibinin Ad Soyad ve İmzası Name Surname and Signature of Complainant	



ANNEX 4: SAMPLE GRIEVANCE CLOSURE FORM

Şikayet Numarası: Grievance No:	Şikayet sahibi: Complainant Info	Şikayet kapatma sonucu özeti: (Summary of complaint closure result):	
Alınması Gereken Uzun Vadeli Düzeltici faaliyetler (Gerekli ise): Identify the long-term corrective actions (if necessary)	Şikayet kayıt tarihi: Date of Complaints Received		
DÜZELTİCİ FAALİYETİN KONTROLÜ VE KARARI / CONTROL AND DECISION OF CORRECTIVE ACTION			
Düzeltici Faaliyetin Aşamaları Corrective Actions	Düzeltici faaliyetin planlandığı tarih Date when corrective action is planned	Düzeltici faaliyetin uygulandığı tarih Date the corrective action was implemented	Düzeltici faaliyetin sonucu Result of corrective action
1.			
2.			
3.			
4.			
5.			
6.			



ANNEX 5: THE LIST OF PARTICIPANTS AND MEETING PHOTOGRAPHS OF THE KGM 5TH REGION STAKEHOLDER MEETING



The photos of the KGM 5th Region Stakeholder Meeting

TÜRKİYE ACIL YOL REHABİLİTASYONU VE YENİDEN YAPIM PROJESİ TÜRKİYE EMERGENCY ROAD REHABILITATION AND RECONSTRUCTION PROJECT							
PAYDAŞ KATILIM TOPLANTISI KATILIMCI ÇİZELGESİ / STAKEHOLDER PARTICIPATION MEETING ATTENDANT LIST							
Yer/Location: Hatay Büyükşehir Belediyesi Ulaşım Daire Başkanlığı Toplam Saha / Hatay Metropolitan Municipality Transportation Department Meeting Hall Adres/Address: Antakya Oğuzan Yarı Antakya/Hatay / Next to Antakya Bus Terminal Antakya/Hatay							Tarih/Date: 13.08.2024 Saat/Time: 11:00-12:30
No	Adı Soyadı / Name Surname	Unvanı / Title	Şirket / Kurum / Company / Institution	Telefon / Telephone	E-posta / E-mail	İmza / Signature	
1	Aliye Hamambazlıoğlu	KGM	KGM				
2	Erkin Kızılcık	KGM	KGM				
3	Aliye Hamambazlıoğlu	KGM	KGM				
4	M. Ali BAYRAKTAR	Halk	Halk				
5	Hüseyin GÖRÜR	Halk	Halk				
6	Mustafa DEMİR	Halk	Halk				
7	Aliye Hamambazlıoğlu	KGM	KGM				
8							
9							
10							

TÜRKİYE ACIL YOL REHABİLİTASYONU VE YENİDEN YAPIM PROJESİ TÜRKİYE EMERGENCY ROAD REHABILITATION AND RECONSTRUCTION PROJECT							
PAYDAŞ KATILIM TOPLANTISI KATILIMCI ÇİZELGESİ / STAKEHOLDER PARTICIPATION MEETING ATTENDANT LIST							
Yer/Location: Hatay Büyükşehir Belediyesi Ulaşım Daire Başkanlığı Toplam Saha / Hatay Metropolitan Municipality Transportation Department Meeting Hall Adres/Address: Antakya Oğuzan Yarı Antakya/Hatay / Next to Antakya Bus Terminal Antakya/Hatay							Tarih/Date: 13.08.2024 Saat/Time: 11:00-12:30
No	Adı Soyadı / Name Surname	Unvanı / Title	Şirket / Kurum / Company / Institution	Telefon / Telephone	E-posta / E-mail	İmza / Signature	
1	Mehmet ÇAKIR	Kontrol Şefi	Kamalyer				
2	Aliye Kızılcık	İns. Müh.	Fen				
3	Hasan ÇAKIR	İns. Müh.	Daha				
4	Seydi YILDIZ	Yatırım Sorumlusu	KGM				
5	Yıldırım ÖZKAN	Yatırım Sorumlusu	KGM				
6	Baki İSİN	Genel Müdür	KGM				
7	Mehmet ÇAKIR	İns. Müh.	Kamalyer				
8	Nezir ÇAKIR	İns. Müh.	Kamalyer				
9	Elvan Ayhan	Denetim	Kamalyer				
10	Mehmet ÇAKIR	İns. Müh.	Kamalyer				

TÜRKİYE ACIL YOL REHABİLİTASYONU VE YENİDEN YAPIM PROJESİ TÜRKİYE EMERGENCY ROAD REHABILITATION AND RECONSTRUCTION PROJECT							
PAYDAŞ KATILIM TOPLANTISI KATILIMCI ÇİZELGESİ / STAKEHOLDER PARTICIPATION MEETING ATTENDANT LIST							
Yer/Location: Hatay Büyükşehir Belediyesi Ulaşım Daire Başkanlığı Toplam Saha / Hatay Metropolitan Municipality Transportation Department Meeting Hall Adres/Address: Antakya Oğuzan Yarı Antakya/Hatay / Next to Antakya Bus Terminal Antakya/Hatay							Tarih/Date: 13.08.2024 Saat/Time: 11:00-12:30
No	Adı Soyadı / Name Surname	Unvanı / Title	Şirket / Kurum / Company / Institution	Telefon / Telephone	E-posta / E-mail	İmza / Signature	
1	Mehmet ÇAKIR	Kontrol Şefi	Kamalyer				
2	Aliye Kızılcık	İns. Müh.	Fen				
3	Hasan ÇAKIR	İns. Müh.	Daha				
4	Seydi YILDIZ	Yatırım Sorumlusu	KGM				
5	Yıldırım ÖZKAN	Yatırım Sorumlusu	KGM				
6	Baki İSİN	Genel Müdür	KGM				
7	Mehmet ÇAKIR	İns. Müh.	Kamalyer				
8	Nezir ÇAKIR	İns. Müh.	Kamalyer				
9	Elvan Ayhan	Denetim	Kamalyer				
10	Mehmet ÇAKIR	İns. Müh.	Kamalyer				

TÜRKİYE ACIL YOL REHABİLİTASYONU VE YENİDEN YAPIM PROJESİ TÜRKİYE EMERGENCY ROAD REHABILITATION AND RECONSTRUCTION PROJECT							
PAYDAŞ KATILIM TOPLANTISI KATILIMCI ÇİZELGESİ / STAKEHOLDER PARTICIPATION MEETING ATTENDANT LIST							
Yer/Location: Hatay Büyükşehir Belediyesi Ulaşım Daire Başkanlığı Toplam Saha / Hatay Metropolitan Municipality Transportation Department Meeting Hall Adres/Address: Antakya Oğuzan Yarı Antakya/Hatay / Next to Antakya Bus Terminal Antakya/Hatay							Tarih/Date: 13.08.2024 Saat/Time: 11:00-12:30
No	Adı Soyadı / Name Surname	Unvanı / Title	Şirket / Kurum / Company / Institution	Telefon / Telephone	E-posta / E-mail	İmza / Signature	
1	Mehmet ÇAKIR	Kontrol Şefi	Kamalyer				
2	Aliye Kızılcık	İns. Müh.	Fen				
3	Hasan ÇAKIR	İns. Müh.	Daha				
4	Seydi YILDIZ	Yatırım Sorumlusu	KGM				
5	Yıldırım ÖZKAN	Yatırım Sorumlusu	KGM				
6	Baki İSİN	Genel Müdür	KGM				
7	Mehmet ÇAKIR	İns. Müh.	Kamalyer				
8	Nezir ÇAKIR	İns. Müh.	Kamalyer				
9	Elvan Ayhan	Denetim	Kamalyer				
10	Mehmet ÇAKIR	İns. Müh.	Kamalyer				

TÜRKİYE ACIL YOL REHABİLİTASYONU VE YENİDEN YAPIM PROJESİ TÜRKİYE EMERGENCY ROAD REHABILITATION AND RECONSTRUCTION PROJECT							
PAYDAŞ KATILIM TOPLANTISI KATILIMCI ÇİZELGESİ / STAKEHOLDER PARTICIPATION MEETING ATTENDANT LIST							
Yer/Location: Hatay Büyükşehir Belediyesi Ulaşım Daire Başkanlığı Toplam Saha / Hatay Metropolitan Municipality Transportation Department Meeting Hall Adres/Address: Antakya Oğuzan Yarı Antakya/Hatay / Next to Antakya Bus Terminal Antakya/Hatay							Tarih/Date: 13.08.2024 Saat/Time: 11:00-12:30
No	Adı Soyadı / Name Surname	Unvanı / Title	Şirket / Kurum / Company / Institution	Telefon / Telephone	E-posta / E-mail	İmza / Signature	
1	Mehmet ÇAKIR	Kontrol Şefi	Kamalyer				
2	Aliye Kızılcık	İns. Müh.	Fen				
3	Hasan ÇAKIR	İns. Müh.	Daha				
4	Seydi YILDIZ	Yatırım Sorumlusu	KGM				
5	Yıldırım ÖZKAN	Yatırım Sorumlusu	KGM				
6	Baki İSİN	Genel Müdür	KGM				
7	Mehmet ÇAKIR	İns. Müh.	Kamalyer				
8	Nezir ÇAKIR	İns. Müh.	Kamalyer				
9	Elvan Ayhan	Denetim	Kamalyer				
10	Mehmet ÇAKIR	İns. Müh.	Kamalyer				

TÜRKİYE ACIL YOL REHABİLİTASYONU VE YENİDEN YAPIM PROJESİ TÜRKİYE EMERGENCY ROAD REHABILITATION AND RECONSTRUCTION PROJECT							
PAYDAŞ KATILIM TOPLANTISI KATILIMCI ÇİZELGESİ / STAKEHOLDER PARTICIPATION MEETING ATTENDANT LIST							
Yer/Location: Hatay Büyükşehir Belediyesi Ulaşım Daire Başkanlığı Toplam Saha / Hatay Metropolitan Municipality Transportation Department Meeting Hall Adres/Address: Antakya Oğuzan Yarı Antakya/Hatay / Next to Antakya Bus Terminal Antakya/Hatay							Tarih/Date: 13.08.2024 Saat/Time: 11:00-12:30
No	Adı Soyadı / Name Surname	Unvanı / Title	Şirket / Kurum / Company / Institution	Telefon / Telephone	E-posta / E-mail	İmza / Signature	
1	Mehmet ÇAKIR	Kontrol Şefi	Kamalyer				
2	Aliye Kızılcık	İns. Müh.	Fen				
3	Hasan ÇAKIR	İns. Müh.	Daha				
4	Seydi YILDIZ	Yatırım Sorumlusu	KGM				
5	Yıldırım ÖZKAN	Yatırım Sorumlusu	KGM				
6	Baki İSİN	Genel Müdür	KGM				
7	Mehmet ÇAKIR	İns. Müh.	Kamalyer				
8	Nezir ÇAKIR	İns. Müh.	Kamalyer				
9	Elvan Ayhan	Denetim	Kamalyer				
10	Mehmet ÇAKIR	İns. Müh.	Kamalyer				

The list of participants of the KGM 5th Region Stakeholder Meeting



ANNEX 6: THE LIST OF PARTICIPANTS AND MEETING PHOTOGRAPHS OF THE KGM 8TH REGION STAKEHOLDER MEETING



The Photos of the KGM 8th Region Stakeholder Meeting

TÜRKİYE ACIL YOL REHABİTASYONU VE YENİDEN YAPIM PROJESİ TÜRKİYE EMERGENCY ROAD REHABILITATION AND RECONSTRUCTION PROJECT		TÜRKİYE ACIL YOL REHABİTASYONU VE YENİDEN YAPIM PROJESİ TÜRKİYE EMERGENCY ROAD REHABILITATION AND RECONSTRUCTION PROJECT				
PAYDAŞ KATILIM TOPLANTISI KATILIMCI ÇİZELGESİ / STAKEHOLDER PARTICIPATION MEETING ATTENDANT LIST		PAYDAŞ KATILIM TOPLANTISI KATILIMCI ÇİZELGESİ / STAKEHOLDER PARTICIPATION MEETING ATTENDANT LIST				
Yer/Location: DSI 92, Şube Müdürlüğü / DSI 92 nd Branch Directorate Adres/Address: Topoğuz Mah. Akınlar Cad. No:492 Yeşilyurt - Malatya / Topoğuz Neighborhood, Akınlar Street, No:492, Yeşilyurt - Malatya		Yer/Location: DSI 92, Şube Müdürlüğü / DSI 92 nd Branch Directorate Adres/Address: Topoğuz Mah. Akınlar Cad. No:492 Yeşilyurt - Malatya / Topoğuz Neighborhood, Akınlar Street, No:492, Yeşilyurt - Malatya				
Tarih/Date: 15.08.2024 Saat/Time: 11:00-12:30		Tarih/Date: 15.08.2024 Saat/Time: 11:00-12:30				
No	Adı Soyadı / Name Surname	Unvanı / Title	Şirket / Kurum / Company / Institution	Telefon / Telephone	E-posta / E-mail	İmza / Signature
1	Adnan ÖZCAN	Mimar	KONİS			[Signature]
2	Ömer KARAS	Yapı İşleri Uzmanı	Yapı İşleri Uzmanı			[Signature]
3	Çengiz YAVUZ	Mühendis	ELEREN			[Signature]
4	Ömer Faruk ÖZCAN	Mühendis	KONİS			[Signature]
5	H. Beyazıt Uzun	Mühendis	Dünya İnşaat			[Signature]
6	Mehmet ÇELİK	Ekspert	KONİS			[Signature]
7	Abdullah Altın	Yapı İşleri Uzmanı	Yapı İşleri Uzmanı			[Signature]
8	Mehmet Yılmaz	Yapı İşleri Uzmanı	Yapı İşleri Uzmanı			[Signature]
9	Ömer KARAS	Yapı İşleri Uzmanı	Yapı İşleri Uzmanı			[Signature]
10	Ömer KARAS	Yapı İşleri Uzmanı	Yapı İşleri Uzmanı			[Signature]
Yer/Location: DSI 92, Şube Müdürlüğü / DSI 92 nd Branch Directorate Adres/Address: Topoğuz Mah. Akınlar Cad. No:492 Yeşilyurt - Malatya / Topoğuz Neighborhood, Akınlar Street, No:492, Yeşilyurt - Malatya		Yer/Location: DSI 92, Şube Müdürlüğü / DSI 92 nd Branch Directorate Adres/Address: Topoğuz Mah. Akınlar Cad. No:492 Yeşilyurt - Malatya / Topoğuz Neighborhood, Akınlar Street, No:492, Yeşilyurt - Malatya				
Tarih/Date: 15.08.2024 Saat/Time: 11:00-12:30		Tarih/Date: 15.08.2024 Saat/Time: 11:00-12:30				
No	Adı Soyadı / Name Surname	Unvanı / Title	Şirket / Kurum / Company / Institution	Telefon / Telephone	E-posta / E-mail	İmza / Signature
1	Enur ERGÖZALP	Genel Müdür	GENEL MÜDÜR			[Signature]
2	Kerem ALIĞÖZ	Mühendis	Mühendis			[Signature]
3	Hüseyin Fındık	Mühendis	Mühendis			[Signature]
4	Mehmet KARAY	Mühendis	Mühendis			[Signature]
5	Mehmet TOMO	Mühendis	Mühendis			[Signature]
6	Ömer KARAS	Yapı İşleri Uzmanı	Yapı İşleri Uzmanı			[Signature]
7	Mehmet KARAY	Mühendis	Mühendis			[Signature]
8	Mehmet KARAY	Mühendis	Mühendis			[Signature]
9	Mehmet KARAY	Mühendis	Mühendis			[Signature]
10	Mehmet KARAY	Mühendis	Mühendis			[Signature]

The list of participants of the KGM 8th Region Stakeholder Meeting



ANNEX 7: THE PROJECT MEETING INVITATION INFORMATION LETTER



T.C. ULAŞTIRMA VE
ALTYAPI BAKANLIĞI



KARAYOLLARI
GENEL MÜDÜRLÜĞÜ

TÜRKİYE ACİL YOL REHABİLİTASYONU VE YENİDEN YAPIM PROJESİ HALKIN KATILIM TOPLANTILARINA DAVET

Karayolları Genel Müdürlüğü, 6 Şubat ve 20 Şubat 2023 tarihlerinde meydana gelen depremlerde hasar gören yolların, tünellerin ve köprülerin rehabilite edilmesini ve yeniden yapımını da kapsayan çalışmaları sürdürmektedir. Geniş bir bölgeyi içine alan proje alanında "Türkiye Acil Yol Rehabilitasyonu ve Yeniden Yapım Projesi" dahilinde 5 alt proje yer almaktadır.

Projeler çerçevesinde yürütülen çevresel, sosyal çalışmalar hakkında halkın bilgilendirilmesi, halkın görüş ve önerilerinin alınması ve proje ile ilgili sorularını iletmeleri amacıyla "Halkın Katılım Toplantıları" yapılacaktır.

Halkımıza saygı ile duyurulur.

HALKIN KATILIM TOPLANTILARI

Karayolları 5. Bölge Müdürlüğü (Mersin) tarafından yürütülen projeler için;

Tarih : 13 Ağustos 2024 **Saat :** 11.00 – 12.30

Yer : Hatay Büyükşehir Belediyesi Ulaşım Daire Başkanlığı Toplantı Salonu

Adres: Antakya Otogarı Yanı

Karayolları 8. Bölge Müdürlüğü (Elazığ) tarafından yürütülen projeler için;

Tarih : 15 Ağustos 2024 **Saat :** 11.00 - 12.30

Yer : DSİ 92. Şube Müdürlüğü

Adres: Topsöğüt Mah. Akpınar Cad. No:49/2 Yeşilyurt /Malatya



Karayolları 5. Bölge Müdürlüğü (Mersin) yetki alanı içinde yer alan projeler :

P1: Tarsus-Adana-Gaziantep (TAG) Otoyolu Rehabilitasyonu

P2: Hatay İli Yollarının Rehabilitasyonu ve Yeniden Yapımı

P3: Antakya-Samandağ Yolu Yeniden Yapımı

Karayolları 8. Bölge Müdürlüğü (Elazığ) yetki alanı içinde yer alan projeler :

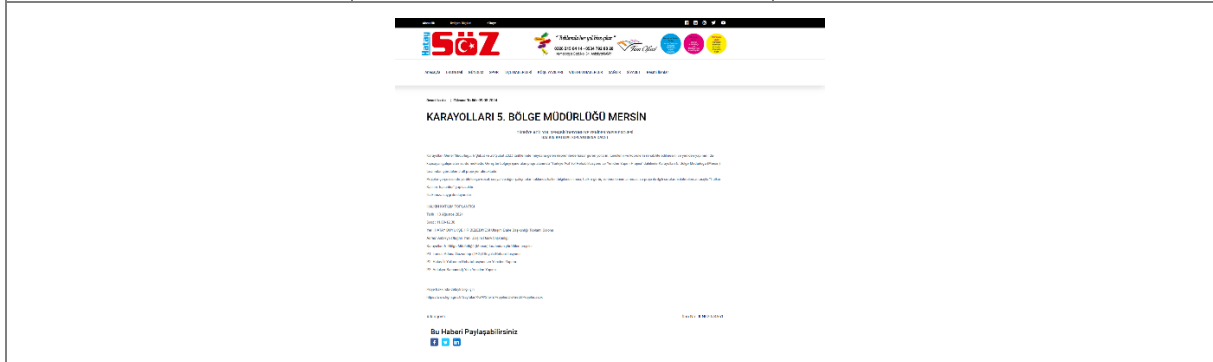
P4: Malatya-Akçadağ-Gölbaşı Yolu & Erkenek Tüneli Yapım ve Rehabilitasyonu

P5: Tohma, Ağın ve Beylerderesi Köprülerinin Rehabilitasyonu

Proje hakkında detaylı bilgi için <https://www.kgm.gov.tr/Sayfalar/KGM/SiteTr/Projeler/DisKrediliProjeler.aspx>



ANNEX 8: THE PROJECT ANNOUNCEMENTS, BROCHURES AND POSTERS



ANTEP FİSTİĞİ 40 DERECELİK SICAKTA HASAT EDİLİYOR



Antep fıstığı hasatı, Antep'te her yıl yapılan önemli bir tarımsal faaliyettir. Bu yıl da hasat, yüksek sıcaklıklar nedeniyle erken başladı. Tarımcılar, ürünün kalitesini korumak için dikkatli davranıyorlar.

Antep fıstığı, Türkiye'nin önemli ihracat ürünlerinden biridir. Özellikle Çin ve ABD pazarlarına yüksek taleple karşılaşılıyor. Tarımcılar, ürünün kalitesini korumak için dikkatli davranıyorlar.

Hasat süreci, erken başlayan sıcaklar nedeniyle hızlandı. Tarımcılar, ürünün kalitesini korumak için dikkatli davranıyorlar.

ÇOCUKLARDA UZUN SÜREN İŞHALE DİKKAT



Çocuklarda uzun süren işhale dikkat, genellikle beslenme alışkanlıklarıyla ilişkilendiriliyor. Uzun süreli işhale, çocukların sağlığını etkileyebilir. Aileler, çocuklarının beslenme düzenini gözden geçirmeli.

Uzun süreli işhale, çocukların sindirim sistemini etkileyebilir. Aileler, çocuklarının beslenme düzenini gözden geçirmeli. Sağlık uzmanları, bu sorunu önlemek için tavsiyeler veriyor.

TÜRKİYE ACİL YOL REHABİLİTASYONU VE YENİDEN YAPIM PROJESİ HALKIN KATILIM TOPLANTISINA DAĞINDI



Türkiye Acil Yol Rehabilitasyonu ve Yeniden Yapım Projesi, halkın katılımıyla ilerletiliyor. Proje, ulaşım sorunlarını çözmek için önemli adımlar atıyor. Halkın katılımı, projenin başarısını artıracaktır.

Proje kapsamında yapılacak çalışmalar, ulaşım sorunlarını çözmek için önemli adımlar atıyor. Halkın katılımı, projenin başarısını artıracaktır. Uzmanlar, projenin hayata geçirilmesini istiyor.

Yiğit'ten Duygusal Veda



Yiğit, bir dönem için çıktığı yolculuğa veda ediyor. Duygusal veda, onun için önemli bir anı. Halk, onun başarılarına teşekkür ediyor.

Yeni Malatyaspor Israrıcı

Yeni Malatyaspor, transfer konusunda ısrarcı davranıyor. Kulübün menajeri, transferin hızla gerçekleşmesini istiyor. Taraflar, anlaşmaya çalışıyor.

Yüksel Batuhan, Atlı Okçulukta Şampiyon



Yüksel Batuhan, atlı okçulukta şampiyon oldu. Yarışta gösterdiği performansıyla, onu izleyenleri etkiledi. Başarıya, antrenörleri ve destekçileri katkı sağladı.



Munzur Dağlarını Kros motorlarıyla aşıtlar

Munzur Dağları, kros motorlarıyla aşıldı. Yarış, doğanın güzelliklerini sergiledi. Katılımcılar, zorlu koşullara rağmen başarıya ulaştı.

TÜRKİYE ACİL YOL REHABİLİTASYONU VE YENİDEN YAPIM PROJESİ HALKIN KATILIM TOPLANTISINA DAVET

Türkiye Acil Yol Rehabilitasyonu ve Yeniden Yapım Projesi, halkın katılımıyla ilerletiliyor. Proje, ulaşım sorunlarını çözmek için önemli adımlar atıyor. Halkın katılımı, projenin başarısını artıracaktır.

Proje kapsamında yapılacak çalışmalar, ulaşım sorunlarını çözmek için önemli adımlar atıyor. Halkın katılımı, projenin başarısını artıracaktır. Uzmanlar, projenin hayata geçirilmesini istiyor.

"HEKİMLİHANLILARIN GÖNLÜMÜZDE YERİ AYRI"



"Hekimhanlıların gönülümüzde yeri ayrı" sloganıyla bir kampanya başlatıldı. Kampanya, sağlık çalışanlarına teşekkür amacıyla yapıldı. Halk, sağlık çalışanlarına saygı gösteriyor.

VEFAT ve BAŞSAĞLIĞI

Önceki dönem AK Parti Malatya Milletvekili ÖZNR ÇALIK'ın vefatı haberi geldi. Vefatına, yakınları ve arkadaşları üzülmektedir.

MUHSİN ÖZ

Hakk'a yürüdü. Derin üzüntü içerisindeyiz. Merhuma Allah'tan rahmet, kederli ailesine ve sevenlerine başsağlığı dileriz.

VEFAT ve BAŞSAĞLIĞI

Aydın, Aynur, Mesut, Mustafa EROĞLU'nun anımleri.

AYŞE EROĞLU

Hakk'a yürüdü. Derin üzüntü içerisindeyiz. Merhume Allah'tan rahmet, kederli ailesine ve sevenlerine başsağlığı dileriz.

Tazye Yeri: Mihidül Gâlibiye Mehmet KABA camii Arkasında GENİŞLİR APT. ÇARŞISI

TAM OTOMATİK PARLAMA NOKTASI TAYIN ÇHAZI ALMIŞI TÜRKİYE CUMHURİYETİ DEVLET DEMİRLÖKLERİ SAĞLIK A.Ş. GENEL MÜDÜRLÜĞÜ MALATYA BÖLGE MÜD.

Genel Müdürlüğümüzce, 13 Ağustos 2024 tarihinde yapılan toplantıda, aşağıdaki şekilde kararlar alınmıştır. Kararlar, ilgili birimlere iletilmiştir. İşlemlerin hızla tamamlanmasını rica ederiz.